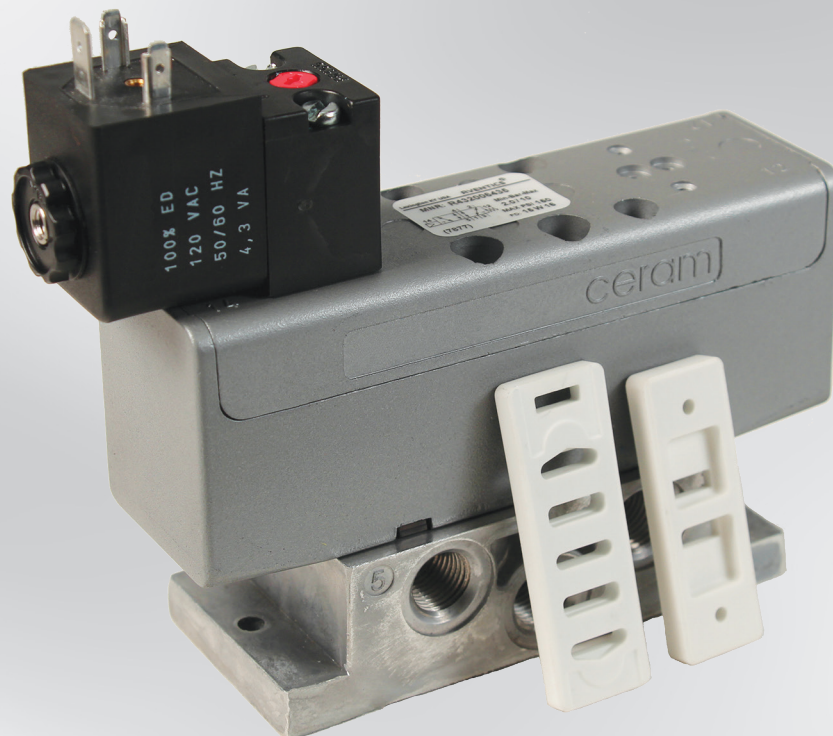


AVENTICS 

**CERAM™ PNEUMATIC
DIRECTIONAL CONTROL
VALVE
ISO 5599/1 SIZES 1 - 4**

Pneumatics
It's that easy

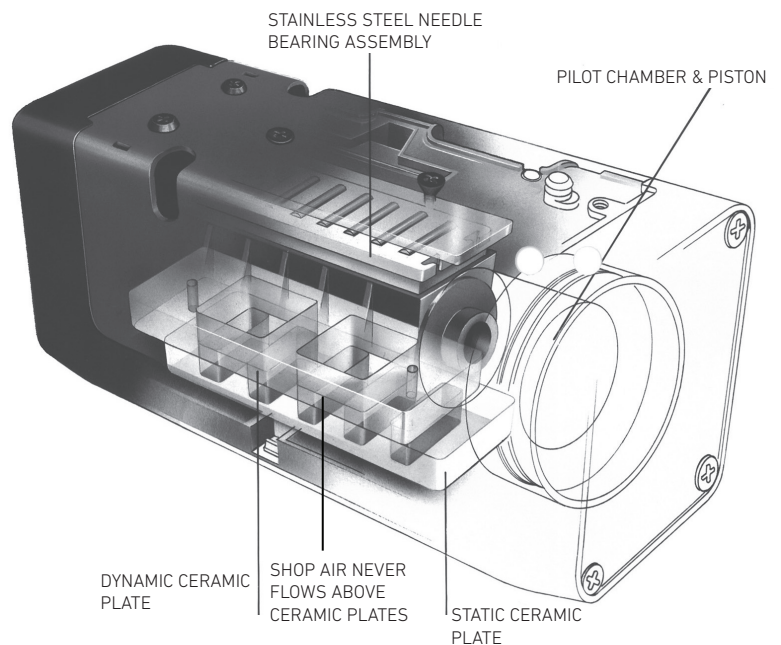


Tough enough to survive, no matter where in the world you send it

The secret's a ceramic seal. Inside the valve a pair of sliding ceramic plates form a nearly perfect, almost indestructible seal. The near diamond hard plates wipe themselves clean, shrugging off ingested dirt that destroys ordinary valves. The result makes the Ceram valve the toughest on the market.

The benefits

- **Extended life**
Years of proven field service with Ceram™ valves verify an anticipated life of 150 million cycles even under adverse conditions. The ceramic plates are warranted for the life of the valve.
- **Just as tough with no lubrication**
The Ceram valve is pre-lubed with grease. Its unique ceramic plate wiping action prevents wear even without line lubrication.
- **Global standard ISO mounting**
ISO 5599/1 mounting dimensions mean that wherever you send it, it's completely interchangeable with other ISO valves anywhere in the world.
- **Standard electrical connections**
The solenoid versions operate with either AC 50 or 60 HZ service or DC voltages, using continuous duty plug-in solenoids with DIN 43 650 connectors. Lighted or non-lighted connectors are options. The Ceram valve meets NEMA 4 electrical specifications.
- **Complete offering**
Four basic valve sizes ISO 1 through 4 with subbases and manifolds available for 1/4" through 1" in NPT or ISO G(BSPP) ports. Manifolds can be end or bottom ported with no special tie rods. Models include single or double solenoid, and single or double air pilot. Solenoids can be either internal or external pilot..



Focused
Delivery
Program

Some of the most popular Ceram valves are included in the AVENTICS Quick Ship Program.



A complete offering - Ceram™ valves fit the job

Choose the valve model that's right for your application. Ceram offers lots of choices other than the four ISO sizes and solenoid vs. air pilot operation. You can have two- or three-position (closed center or exhaust open center) operation, even dual-pressure and vacuum operation if needed.



▲ Bottom and End Ported Manifold:
Available for sizes 1 to 4
(ISO size 1 shown)



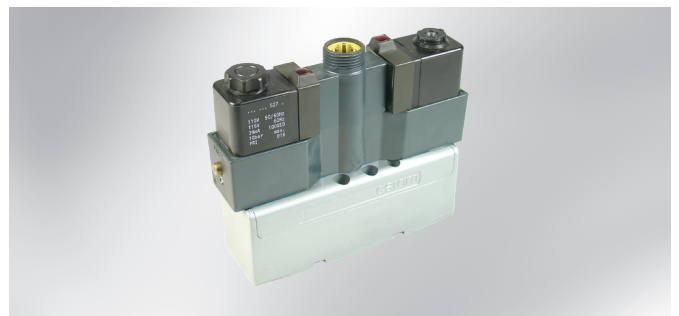
▲ Explosion Proof Solenoid Operator:
Available for all sizes. Standard with 1/2" conduit housing and 18" wire leads. Various U.L. and NEMA approvals.



▲ Ceramic Sliding Plates:
Warranted for the life of the valve. Near diamond hardness.



▲ Single Side Ported Subbase:
Available for all sizes. Two port size choices for sizes 1 through 3.



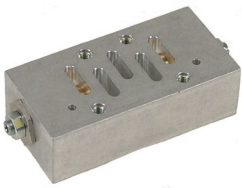
▲ Brad Harrison® Type Connector:
Available for all sizes in 3, 4 or 5 pin in single solenoid, and 4 or 5 pin in double solenoid.

A wide range of Accessories for you to choose from

Ceram™ valve accessories customized for your application. Everything pipes directly into the base. That makes it easy to add accessories like flow controls or a regulator, or even a maintenance plate that allows a valve to be serviced while the other valves on the manifold operate.

Sandwich Flow Control

Available in all sizes. Adjust via screw on each side.



Dual Pressure Sandwich Regulator

Available for sizes 1 through 3. Provides two separate delivery pressures.



Maintenance Plate

Available for sizes 1 through 3. Allows servicing of an individual valve in a manifold system.



Sandwich Regulator

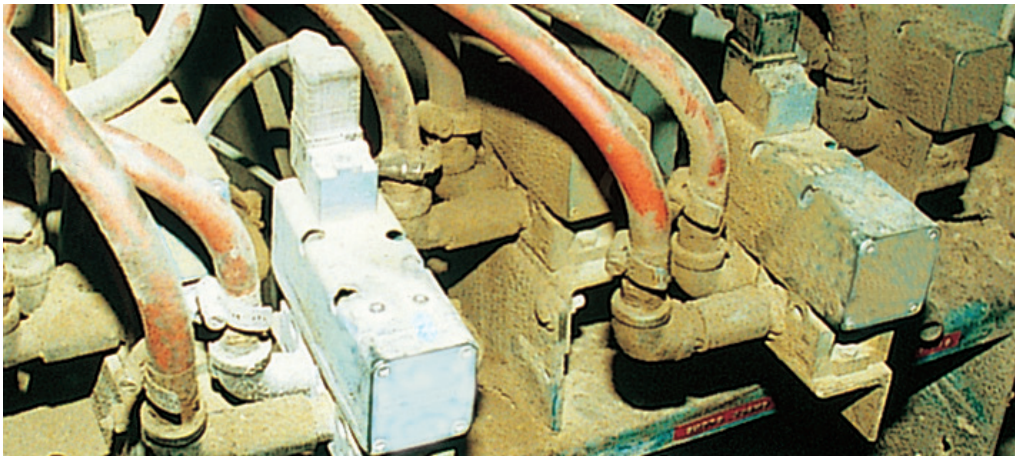
Available for all sizes 1 through 3. Knob can lock in a given position.



Mating Solenoid Connectors

Full line of 1/2" conduit and stain relief connectors for all valve sizes. Lighted and non-lighted versions.





◀ CERAM endures the test of time!
 Concrete batching plant application. Ceram valves withstand harsh conditions and dirty air without "sticking".

Specified by industries that demand tough valves due to their harsh operating environment.

Ceram™ valves are very prevalent where ordinary valves just don't last. Industries such as: tire plants, foundries, paper mills, steel plants, concrete batch plants, sawmills, plywood and board plants, automotive assembly, rubber and plastics glass manufacturers, smelting, sheet metal fabrication, etc.

- Eliminates downtime from replacement of valves that stick
- Work in a wide range of industrial applications

Valve sizes / Specifications			
Valve size	Ports NPT, ISO G (BSPP)	C _v	S.C.F.M.*
Size 1	1/4", 3/8"	1.1	40 SCFM
Size 2	3/8", 1/2"	2.4	86 SCFM
Size 3	1/2", 3/4"	4.3	155 SCFM
Size 4	1"	7.5	269 SCFM

*Flow measured with 87 psi (6 bar) supply pressure and 14.5 psi (1 bar) pressure drop across the valve.



Online Catalog

The fastest point of entry is via our online catalog. Here you can start your search directly by entering a part number or keyword.



CAD

Your desired object can be issued here directly as a CAD file in various formats, as a PDF file, or for further configuration in your software.



Configurators

The configurator can be reached by clicking the selected product. After selecting your product, you can begin to adapt it to your own specifications.



Calculation Programs

Here you can specify the dimensions or load-bearing capacity of your components with a wide variety of calculation options. We also provide an air consumption calculator as a special feature.



Circuit Diagram Software

With the D&C Scheme Editor, you can quickly and easily create circuit diagrams that are based on your component layout and linked to your catalog selection.



eShop

The eShop is our online shop that answers your price requests and monitors the whole order process up to delivery.

AVENTICS Corporation

www.aventics.com/us
info.us@aventics.com



Follow us:



www.pneumatics-shop.us

USA

AVENTICS Corporation
1953 Mercer Road
Lexington, KY 40511
Tel +1 859 254-8031
Fax +1 859 254-4188
www.aventics.com/us
www.pneumatics-shop.us

Canada

AVENTICS Inc.
5515 N Service Road, Ste #104
Burlington, Ontario L7L 6G4
Tel +1 905 332-0399
Fax +1 905 332-8596
www.aventics.com/ca
www.pneumatics-shop.ca

Mexico

AVENTICS México, S. de R. L. de C.V.
Paseo de la Reforma 295, Piso 8, Interior
A
Col. Cuauhtémoc,
06500 Ciudad de México, México
Tel +52 (55) 3692 4114
info.mx@aventics.com

Germany

AVENTICS GmbH
Ulmer Straße 4
30880 Laatzen, Germany
Tel +49 511 2136-522
Fax +49 511 2136-163
www.aventics.de

China

AVENTICS Group
2002 Unit, Asdendas Plaza, No 333
Tianyaoqiao Road, Xuhui district
Shanghai, China, 200030
Tel +86 21 2426 9666
www.aventics.cn
www.pneumatics-shop.cn

France

AVENTICS S.A.S
155, Avenue du Faucign
ZI Les Fourmis - BP 37
74131 Bonneville Cedex
Tel: +33 (0) 4 50 25 35 45
www.aventics.com/fr

Further contacts:
www.aventics.com/us/locator

The data specified only serve to describe the product. No statements concerning a certain condition or suitability for a certain application can be derived from our information. The information given does not release the user from the obligation of own judgment and verification. It must be remembered that our products are subject to a natural process of wear and aging.