



INTEGRATED SOLUTIONS
CONVEYOR AUTOMATION
SAFETY PULL SWITCH

www.chesscontrols.com
Tel. 705 682 2828
sales@chesscontrols.com

Industrial plants that require rugged safety and automation solutions for their conveyors often use lighter duty products often supplied by original equipment manufacturer.

Products and solution designed for harsh environment traditionally found in Mining – Steel – Aggregates – Cement – Refineries – Paper are readily available. Surprisingly enough, rugged safety pull switch and conveyor automation solution are not more expensive than the lighter duty products commonly supplied installed by many OEM. Whether you simply require a replacement “cable pull safety switch” or if you have a conveyor with long distances in a harsh environment. Not a problem for us!

UPGRADE YOUR CONVEYOR

Improve Monitoring & Control



INCREASE Safety & Productivity

- ✓ 2,000 + I/O
- ✓ 320 Devices Line Powered

REDUCE Downtime / Install Times Cost of Ownership

- ✓ 20km Distances
- ✓ No Parallel Wiring
- ✓ Power at one end

Universal Address Module Terminal | HubBus & Silbus
-50° C to +70° C, IP67 / Nema 4X, UL/CSA | Flag and/or LED indication

ESS3 PULLKEY FEATURES:

- 6 form C, SPDT switches
- Large wiring cavity with 4 conduit entries
- Tensioned or monitored lanyard versions
- Snap action latching operation w/ Manual reset
- Single or double side acting
- Fully compatible with either a tensioned or non tensioned system
- Not susceptible to temperature change (Day / night)



ESS3 PULLKEY TECHNICAL DATA:

Contact rating	5A, 125V AC 0.5A, 60V DC (inductive load) 1A, 60V DC (resistive load)
Contact material	Ag or Au Ni or Au Ag Pt
Mechanical life	10 x10 ⁶ operations (min)
Electrical life	1 x10 ⁴ operations @ max load (min)
Ingress protection	IP67, Nema4x
Temperature range	-50°C to +60°C non condensing
Housing material	Polycarbonate UL94V-0 yellow
Cable tension	<75N
Conduit entries	up to 4 x 20mm
Terminals	2.5mm ² cage clamp
Dimensions	270mm (L) x 100mm (W) x 120mm (D)
Mounting centres	230mm
Mounting holes	10mm x 20mm
Mass	1.6kg



SINGLE CABLE AUTOMATION SOLUTION FOR LONG DISTANCE CONVEYORS

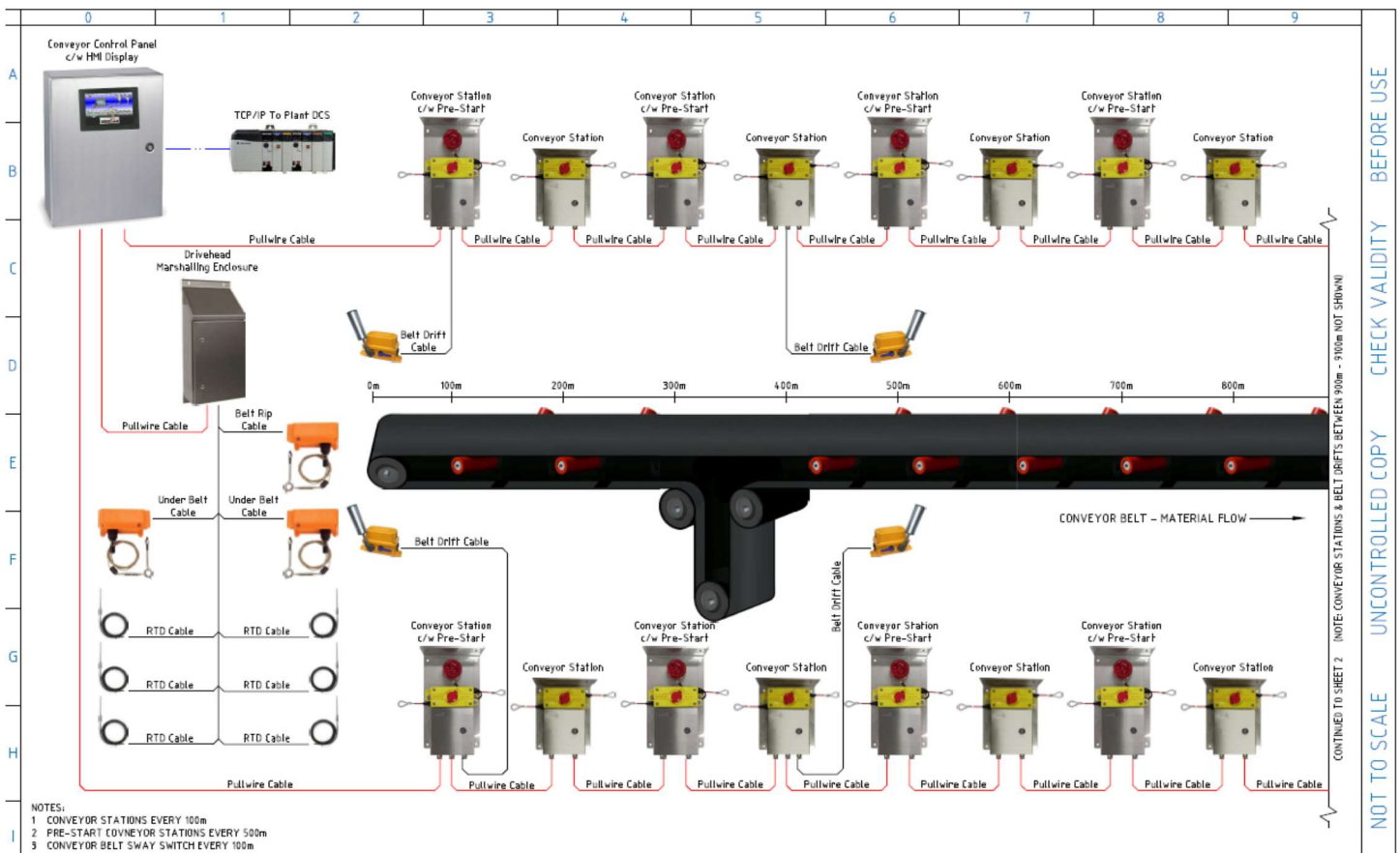
- Pull-wire Lanyard cable has been designed specifically for the Electrical and Mechanical Environments which exists along conveyors.
- One cable solution means SIL2 or 3 rated emergency stop system, digital inputs such as belt wander, chute full signals and analogue values such as bearing temperature, vibration monitoring as well as conveyor pre start warning on the same cable that is used as the pull-wire. **Huge savings in material and installation costs.**




Certifications and Accreditations

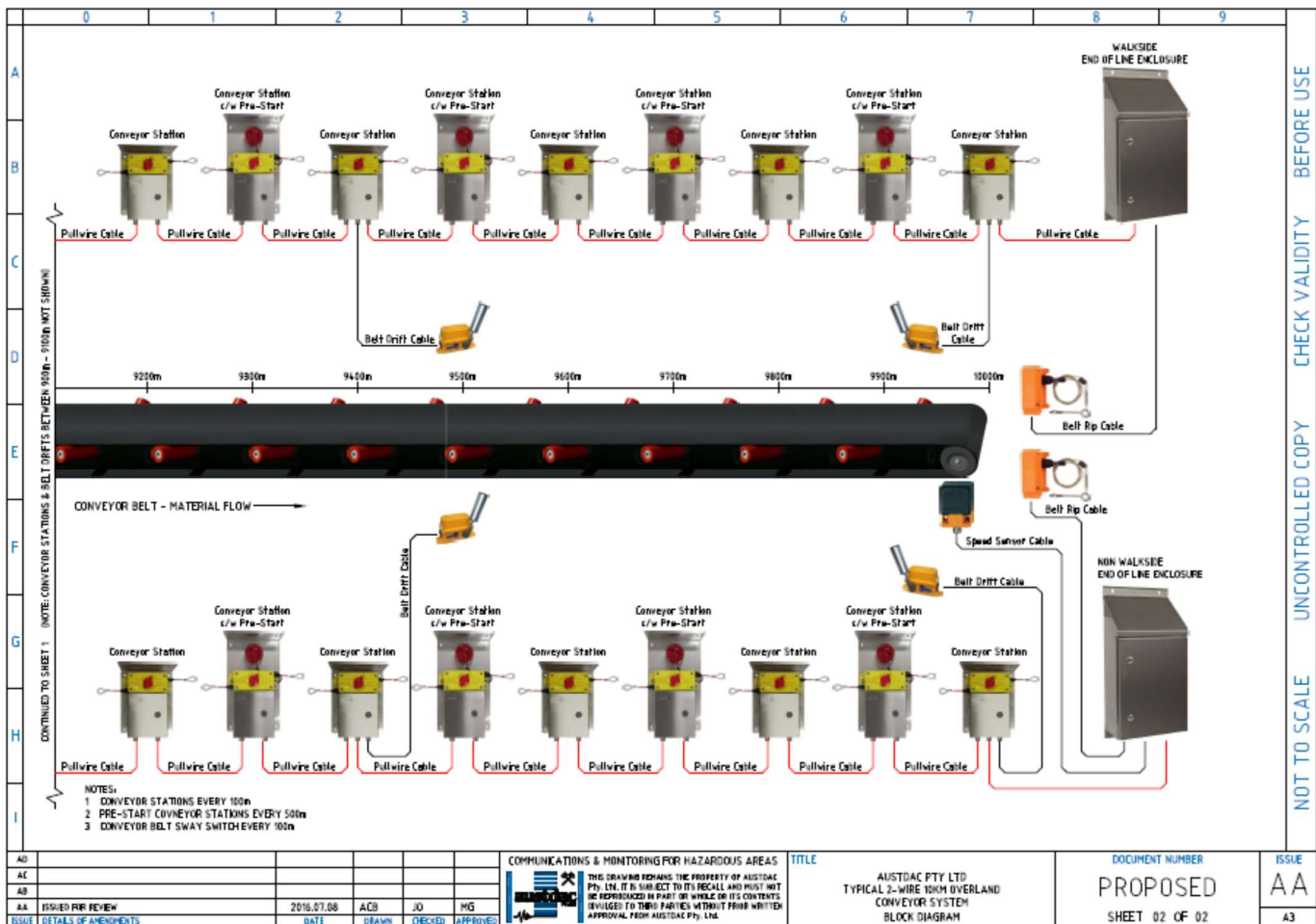
- Certified and tested to Safety Integrity Level (SIL) 2 & 3 as tested to IEC and AS 61508 safety standard
- Tested by TUV testing authority
- Full tested and certified to Safety Category 4 relating to EN954-1 and AS4024.1 Machine guarding standards
- Tested and compliant to International Standards: CE, UL, CSA, SEV, VDE
- The only comparable system with Australian C tick certification for electromagnetic interference

+ 60°C



AD						 <p>THIS DRAWING REMAINS THE PROPERTY OF AUSTDAC Pty Ltd. IT IS SUBJECT TO ITS RECALL AND MUST NOT BE REPRODUCED IN PART OR WHOLE OR ITS CONTENTS DISCLOSED TO THIRD PARTIES WITHOUT PRIOR WRITTEN APPROVAL FROM AUSTDAC Pty Ltd.</p>	TITLE AUSTDAC PTY LTD TYPICAL 2-WIRE 10KM OVERLAND CONVEYOR SYSTEM BLOCK DIAGRAM	DOCUMENT NUMBER PROPOSED	ISSUE AA
AC									
AB									
ISSUE	ISSUED FOR REVIEW	2016.07.08	ACB	JD	MG				
ISSUE	DETAILS OF AMENDMENTS	DATE	DRAWN	CHECKED	APPROVED			SHEET 01 OF 02	A3

NOT TO SCALE	UNCONTROLLED COPY	CHECK VALIDITY	BEFORE USE
--------------	-------------------	----------------	------------



Integrated Communication Systems & Monitoring of Conveyors

