



# Grid Solutions



# Multilin

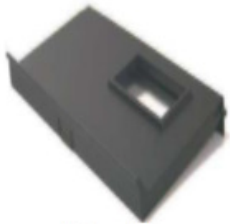
## Replacement Parts & Accessories

MMII Motor Protection System - Parts



### Front Door

Part Number: 1513-0021



### Fuse - Rev E.

Part Number: 0901-0056



### Terminal Cover

Part Number: 1513-0019



### Fuse - Rev D.

Part Number: 0901-0046



### Stop Key Cover

Part Number: 1513-0123



The Motor Manager II (MM2) combines control functions and comprehensive motor protection in one package. This compact device provides sophisticated control and protective relaying at significant cost savings over the discrete devices normally found in a low voltage motor control center (MCC).

### Applications

- Low voltage motor control centers

### Protection & Control

- Overload
- Phase unbalance
- Contactor failure
- Locked/stalled rotor
- Ground fault
- Hot winding thermistor
- Undervoltage auto restart
- Outputs: 2 contactor, 2 programmable
- Inputs: 6 fixed, 10 programmable