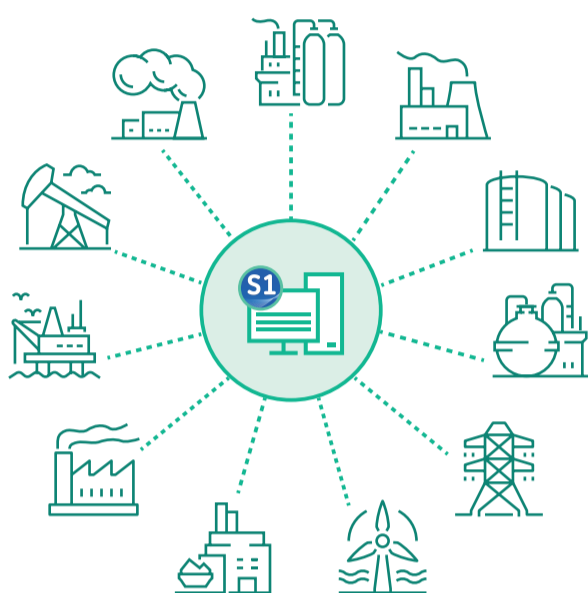


# How Remote Condition Monitoring Sustains Manufacturing Outcomes

Benefitting oil & gas, energy and industrial manufacturing industries

## What is remote condition monitoring and diagnostics?

Expert machinery monitoring, diagnostics, and performance analytics are performed offsite and delivered remotely via secure connections to provide timely and actionable insights that help teams improve operations, mitigate unplanned downtime, and bridge onsite personnel gaps.



### Industries include:

- Refining
- Upstream Oil & Gas
- Power
- Petrochemical
- Metals
- Pulp & Paper
- Mining & Aggregate
- Wastewater Treatment

## Global trends require new ways of thinking and operating

- Remote working arrangements
- Budget cuts and reduced workforce
- Loss of expertise due to retirement
- Travel restrictions
- Unforeseen global events

## Four key service offerings



### Setup & Baseline

- Establish asset health baseline
- Configure software alarms for early problem identification



### Monitor & Diagnose

- Problem identification and event management
- Issue resolution



### Optimize & Tune

- Proactive tuning to limit nuisance alarms



### Data Auditing and Reports

- Exception reporting for all system health alarms (software, hardware, machinery)
- Pre/post outage system health reviews
- Customer KPI reviews

## Offsite remote monitoring provides onsite results

### Get up & running

#### Up to \$1M/day

Avoided cost from lost production, secondary process & equipment damage

#### >90%

Typical reduction in non-actionable alarms & events

### Stay healthy & optimized

#### 5-10X

Cost reduction for planned maintenance outage vs unplanned downtime

#### 100%

Critical protection transducers & channels validated & healthy

### Maximize outcomes

#### 100% ROI

A single machine save often results in complete RMaas contract payback

#### 4-10X+

Current monitoring contract ROI's

#### \$15-25K

Annual IT-related savings with hosted option

## Bently Nevada is a remote condition monitoring partner you can trust

### 60+ years

of condition monitoring experience

### 160+

machinery diagnostic engineers worldwide

### 15,000+

machinery diagnostic projects

### 6 Million+

monitoring points installed worldwide

### 60,000+

product service jobs performed

WANT TO LEARN MORE?

[bently.com](http://bently.com)

**Baker Hughes**