

# Rittal – The System.

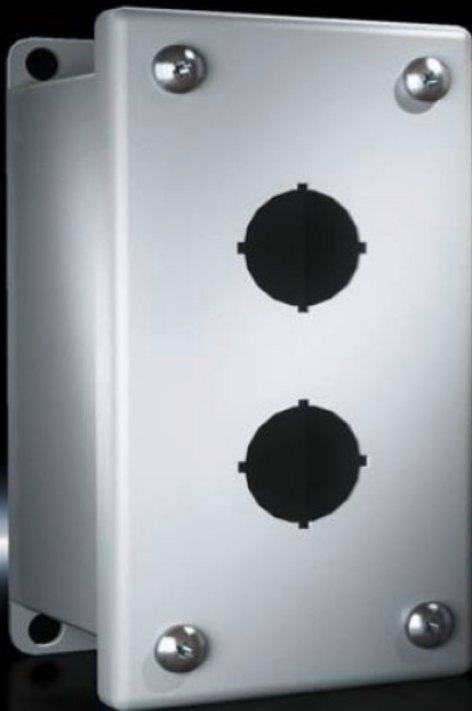
Faster – better – everywhere.

Represented locally by  
CHESS CONTROLS INC.

705 682 2828

[sales@chesscontrols.com](mailto:sales@chesscontrols.com)

## Pushbutton boxes PB



ENCLOSURES

POWER DISTRIBUTION

CLIMATE CONTROL

IT INFRASTRUCTURE

SOFTWARE & SERVICES

FRIEDHELM LOH GROUP



## PB CARBON STEEL

Designed to house commercially available pushbuttons, selector switches and pilot lights.

- Holes in 22.5 and 30 mm
- With 1 – 3 bore holes
- Simple, fast mounting

### Material:

- Housing: Carbon steel
- Cover: Carbon steel, all-round seal

### Color:

- RAL 7035

### Supply includes:

- Pushbutton box
- Cover screws, captive
- Seal

### Protection category NEMA:

- NEMA 12, 13

### Approvals:

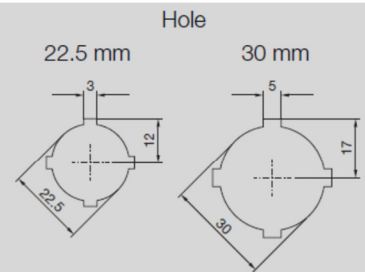
- UL/cUL
- File # E118617

### Model no. overview:

See page 623

### Technical details:

Available on the Internet



Holes are centered on the cover

## PB STAINLESS STEEL

Designed to house commercially available pushbuttons, selector switches and pilot lights.

- Hole size 30 mm
- With 1 – 2 bore holes
- Simple, fast mounting

### Material:

- Housing: Stainless steel 1.4301 (AISI 304), 1.25 mm
- Cover: Stainless steel 1.4301 (AISI 304), 1.25 mm

### Surface finish:

- Housing and cover: Brushed, grain 240

### Supply includes:

- Pushbutton box
- Cover screws, captive
- Seal

### Protection category:

- UL Type 12, 13

### Approvals:

- UL/cUL
- UL file #: E118617

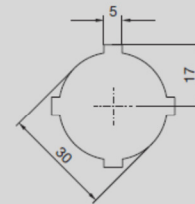
### Model no. overview:

See page 623

### Technical details:

Available on the Internet

Hole



Holes are centered on the cover

## PB CARBON STEEL

PB: Small: Carbon Steel						
Model No.	Number of holes	Hole diameter	Height	Width	Depth	Model No.
<a href="#">PB 8017.645</a>	1	30.5 mm	88 mm (3.5 ")	82 mm (3.2 ")	69 mm (2.7 ")	PB01305S1C
<a href="#">PB 8017.646</a>	2	30.5 mm	146 mm (5.7 ")	82 mm (3.2 ")	69 mm (2.7 ")	PB02305S1C
<a href="#">PB 8017.647</a>	3	30.5 mm	203 mm (8 ")	82 mm (3.2 ")	69 mm (2.7 ")	PB03305S1C
<a href="#">PB 8017.648</a>	4	30.5 mm	260 mm (10 ")	82 mm (3.2 ")	69 mm (2.7 ")	PB04305S1C
<a href="#">PB 8017.651</a>	6	30.5 mm	241 mm (9.5 ")	158 mm (6.2 ")	76 mm (3 ")	PB06305S2C
<a href="#">PB 8017.664</a>	1	22.5 mm	82 mm (3.2 ")	69 mm (2.7 ")	88 mm (3.5 ")	PB01225M1C
<a href="#">PB 8017.665</a>	2	22.5 mm	130 mm (5.1 ")	69 mm (2.7 ")	88 mm (3.5 ")	PB02225M1C
<a href="#">PB 8017.666</a>	3	22.5 mm	177 mm (7 ")	69 mm (2.7 ")	88 mm (3.5 ")	PB03225M1C
<a href="#">PB 8017.667</a>	4	22.5 mm	225 mm (8.9 ")	69 mm (2.7 ")	88 mm (3.5 ")	PB04225M1C

**PB Stainless Steel**

Model No.	Number of holes	Hole diameter	Height	Width	Depth	Model No.
<a href="#">PB 8017.714</a>	1	30.5 mm	88 mm (3.5 ")	82 mm (3.2 ")	69 mm (2.7 ")	PB01305S14
<a href="#">PB 8017.715</a>	2	30.5 mm	146 mm (5.7 ")	82 mm (3.2 ")	69 mm (2.7 ")	PB02305S14
<a href="#">PB 8017.716</a>	3	30.5 mm	203 mm (8 ")	82 mm (3.2 ")	69 mm (2.7 ")	PB03305S14
<a href="#">PB 8017.725</a>	1	22.5 mm	82 mm (3.2 ")	69 mm (2.7 ")	88 mm (3.5 ")	PB01225M14
<a href="#">PB 8017.726</a>	2	22.5 mm	130 mm (5.1 ")	69 mm (2.7 ")	88 mm (3.5 ")	PB02225M14
<a href="#">PB 8017.727</a>	3	22.5 mm	177 mm (7 ")	69 mm (2.7 ")	88 mm (3.5 ")	PB03225M14

**PB XL: Carbon/SS**

Model No.	Number of holes	Hole diameter	Height	Width	Depth	Model No.	
<a href="#">PB 8017.732</a>	1	30.5 mm	101 mm (4 ")	101 mm (4 ")	120 mm (4.7 ")	PB01305X14	SS
<a href="#">PB 8017.733</a>	2	30.5 mm	152 mm (6 ")	101 mm (4 ")	120 mm (4.7 ")	PB02305X14	SS
<a href="#">PB 8017.737</a>	6	30.5 mm	241 mm (9.5 ")	158 mm (6.2 ")	120 mm (4.7 ")	PB06305X24	SS
PB 8017.685	1	30.5 mm	101 mm (4 ")	101 mm (4 ")	120 mm (4.7 ")	PB01305X1C	Carbon Steel
PB 8017.686	2	30.5 mm	152 mm (6 ")	101 mm (4 ")	120 mm (4.7 ")	PB02305X1C	Carbon Steel



1 800 461 4076  
[sales@chesscontrols.com](mailto:sales@chesscontrols.com)

## PB CARBON STEEL

### Product description

<b>Material:</b>	Carbon steel
<b>Surface finish:</b>	Housing and cover: Dipcoat primed, powder-coated on the outside, textured paint
<b>Color:</b>	RAL 7035
<b>Protection category IP to IEC 60 529:</b>	IP 55
<b>Protection category NEMA:</b>	NEMA 12 NEMA 13 NEMA 4
<b>Supply includes:</b>	Cover screws, captive Wall Mounting Brackets

## PB STAINLESS STEEL

### Product description

<b>Material:</b>	Stainless steel 1.4301 (AISI 304)
<b>Surface finish:</b>	Housing and cover: Brushed, grain 240
<b>Protection category IP to IEC 60 529:</b>	IP 55
<b>Protection category NEMA:</b>	NEMA 12 NEMA 13 NEMA 4X
<b>Supply includes:</b>	Wall Mounting Brackets Cover screws, captive