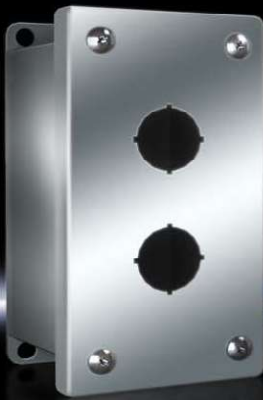


PB Pushbutton Box



System accessories Page 421 **PB pushbutton box, carbon steel** Page 123

Designed to house commercially available pushbuttons, selector switches and pilot lights.

- Hole size 30 mm
- With 1 – 2 bore holes
- Simple, fast mounting

Material:

- Housing: Stainless steel 1.4301 (AISI 304), 1.25 mm
- Cover: Stainless steel 1.4301 (AISI 304), 1.25 mm

Surface finish:

- Housing and cover: Brushed, grain 240

Supply includes:

- Pushbutton box
- Cover screws, captive
- Seal

Protection category:

- UL Type 12, 13

Approvals:

- UL/cUL
- UL file #: E118617

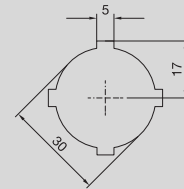
Model no. overview:

See page 623

Technical details:

Available on the Internet

Hole



Holes are centered on the cover

Stainless steel

Model No.	8017.714	8017.715	Page
Model No. US	PB01305S14	PB02305S14	
Height inches (mm)	3.5 (88)	5.7 (146)	
Width inches (mm)	3.2 (82)	3.2 (82)	
Depth inches (mm)	2.7 (69)	2.7 (69)	
Weight lb (kg)	2.3 (1.0)	3.8 (1.7)	
Hole diameter mm	30	30	
Number of holes	1	2	
Accessories			
Oiltight Hole Seals	see page	see page	449
Wall Mounting Bracket	1594.000	1594.000	503