

Weighfeeders

SITRANS WW200

Introduction

Overview



SITRANS WW200 is a low- to medium-capacity weighfeeder used for minor ingredient additives.

Benefits

- High accuracy
- Ideal for low- to medium-capacity loads
- Fast installation, easy to clean and maintain
- Flexible, rugged design allows configurations to suit many applications
- Quick delivery on standard units
- Outboard mounted load cells with protective cover

Application

SITRANS WW200 has been field tested and proven in hundreds of applications.

The unit can be customized to meet exact application needs. Stainless or mild steel units are available in open or enclosed styles. Custom lengths, belt types, inlet configurations, drives, and other options are available to meet your requirements.

Its cantilevered mechanical design provides for quick belt removal and easy maintenance. It is designed to eliminate material build-up, ensuring high accuracy and reliability. The unique weigh system reduces dead load and applies live load directly to two platform load cells. Load cells are externally mounted for easy access and maintenance.

Standard components include an anti-static food grade belt option, horizontal slider bars for self-cleaning and minimal product build up, belt tracking rollers, belt scraper, and plow for self-cleaning.

Technical specifications

SITRANS WW200	
Mode of operation	
Measuring principle	Strain gauge load cells and digital speed sensor
Typical application	Control and monitor feed rates and blending of minerals or powdered additives into a process
Measuring accuracy	
Accuracy ¹⁾	± 0.5 % or better
Repeatability	± 0.1 %
Specified range	10 ... 100 % based on speed
Design rate range	0.45 ... 100 t/h (1 000 lb/h ... 110 STPH)
Max volumetric flow	120 m ³ /h (4 237 ft ³ /h)
Medium conditions	
Operating temperature	-10 ... +55 °C (14 ... 131 °F)
Material	
	Mild steel or stainless steel [304 (1.4301) or 316L (1.4404)], bead blast finish (1 ... 6 µm, 40 ... 240 µin)
Load cells	
Construction	17-4 PH (1.4568) stainless steel or nickel plated alloy steel
Degree of protection	<ul style="list-style-type: none"> Stainless steel: IP68 Nickel plated alloy steel: IP66
Excitation	10 V DC nominal, 15 V DC maximum
Output	2 mV/V
<ul style="list-style-type: none"> Non-linearity Non-repeatability 	± 0.02 % of rated output ± 0.01 % of rated output
Capacity	<ul style="list-style-type: none"> Stainless steel range: 6, 12, 30 kg Nickel-plated range: 10, 15, 20, 30, 50 kg
Overload	150 % of rated capacity
Temperature	<ul style="list-style-type: none"> Operating range: -40 ... +65 °C (-40 ... +150 °F) Compensated: -10 ... +40 °C (15 ... 105 °F)
Speed sensor	
Optical encoder output	RS 422 (TTL) 5 V DC, 150 mA max. 1 000 or 2 000 ppr
Temperature	-10 ... +70 °C (14 ... 158 °F)
Degree of protection	<ul style="list-style-type: none"> Standard: IP64 Stainless steel: IP67
Belt tracking switch	
Aluminum spring rod (un-wired)	<ul style="list-style-type: none"> 1 NO, 1 NC switch blocks Rated operating voltage 600 V AC max.
Temperature	-30 ... +85 °C (-22 ... +185 °F)
Degree of protection	IP67

SITRANS WW200	
Framework	
	<ul style="list-style-type: none"> Precision machined, stainless [304 (1.4301) or 316L (1.4404)] or mild steel Cantilevered design for easy belt replacement
Pulleys	
	152 mm (6 inch) diameter with 6 mm (¼ inch) neoprene lagging
Belt speed	
	0.005 ... 0.36 m/s (1 ... 70 fpm)
Belt support	
	Edge of flat bar eliminates material buildup
Bearings	
	<ul style="list-style-type: none"> 2-bolt flange mount on drive pulley 2-bolt threaded base pillow block on driven pulley
Belting	
	<ul style="list-style-type: none"> Polyester carcass with polyurethane top cover and static control with vulcanized endless finger splice for maximum weighing consistency (standard); optionally available in blue Maximum rated material temperature 82 °C (180 °F) Silicone HT belt rated for max. material temp. of 177 °C (350 °F)
Belt tension	
	Screw type, telescope module with 150 mm (6 inch) travel - mild or stainless steel 304 (1.4301)
Belt cleaning	
	<ul style="list-style-type: none"> PE-HD blade type with spring tensioning at head pulley Return plow Cleaning brush, optional
Drive motor	
	<ul style="list-style-type: none"> AC gearmotor: helical-worm geared motor, IE1, IP55, C2 coating. Optional food grade style: helical-worm geared motor, IE3, IP66, sealed surface treatment, meets FDA requirements.
Shipping weight	
	280 kg (600 lb) minimum
Approvals	
	<ul style="list-style-type: none"> Declaration of incorporation of partly completed machinery acc. directive 2006/42/EC. Stainless steel options meet FDA requirements for food processing. Belt properties in compliance with food safety regulation (EU) 10/2011 and (EC) 1935/2004. Meets FDA 21CFR and Halal. HACCP concept supported: resistant to hot water and ideal for frequent cleaning cycles. Hazardous approvals per configuration options. <p>Note: weighfeeder as a whole is not approved for hazardous locations only electrical components.</p>

¹⁾ Accuracy subject to: on factory approved installations the weigh feeder system's totalized weight will be within the specified accuracy when compared to a known weighed material test sample. The test rate must be within the specified range of the design capacity and held constant for the duration of the test. The minimum material test sample must be equivalent to a sample obtained at the test flow rate for three revolutions of the belt or at least ten minutes running time, whichever is greater.

Weighfeeders**SITRANS WW200****Open style****Selection and ordering data**

Article No.

Article No.

SITRANS WW200 Weighfeeder, painted mild steel, open styleAccuracy is $\pm 0.5\%$ or better, with capacity up to 120 m³/h (4 237 ft³/h).

➤ Click on the Article No. for the online configuration in the PIA Life Cycle Portal.

Add order code Y71 ... Y76 for all models to specify design data.

Painted mild steel, open style, with C/L infeed to C/L discharge12 inch (305 mm) belt width

52 inch (1 321 mm)

60 inch (1 524 mm)

68 inch (1 727 mm)

76 inch (1 930 mm)

84 inch (2 134 mm)

92 inch (2 337 mm)

100 inch (2 540 mm)

108 inch (2 743 mm)

116 inch (2 946 mm)

18 inch (457 mm) belt width

52 inch (1 321 mm)

60 inch (1 524 mm)

68 inch (1 727 mm)

76 inch (1 930 mm)

84 inch (2 134 mm)

92 inch (2 337 mm)

100 inch (2 540 mm)

108 inch (2 743 mm)

116 inch (2 946 mm)

24 inch (610 mm) belt width

52 inch (1 321 mm)

60 inch (1 524 mm)

68 inch (1 727 mm)

76 inch (1 930 mm)

84 inch (2 134 mm)

92 inch (2 337 mm)

100 inch (2 540 mm)

108 inch (2 743 mm)

116 inch (2 946 mm)

30 inch (762 mm) belt width

52 inch (1 321 mm)

60 inch (1 524 mm)

68 inch (1 727 mm)

76 inch (1 930 mm)

84 inch (2 134 mm)

92 inch (2 337 mm)

100 inch (2 540 mm)

108 inch (2 743 mm)

116 inch (2 946 mm)

7MH7300-



0 A

0 B

0 C

0 D

0 E

0 F

0 G

0 H

0 J

1 A

1 B

1 C

1 D

1 E

1 F

1 G

1 H

1 J

2 A

2 B

2 C

2 D

2 E

2 F

2 G

2 H

2 J

3 A

3 B

3 C

3 D

3 E

3 F

3 G

3 H

3 J

SITRANS WW200 Weighfeeder, painted mild steel, open styleAccuracy is $\pm 0.5\%$ or better, with capacity up to 120 m³/h (4 237 ft³/h).36 inch (914 mm) belt width

52 inch (1 321 mm)

60 inch (1 524 mm)

68 inch (1 727 mm)

76 inch (1 930 mm)

84 inch (2 134 mm)

92 inch (2 337 mm)

100 inch (2 540 mm)

108 inch (2 743 mm)

116 inch (2 946 mm)

42 inch (1 067 mm) belt width

52 inch (1 321 mm)

60 inch (1 524 mm)

68 inch (1 727 mm)

76 inch (1 930 mm)

84 inch (2 134 mm)

92 inch (2 337 mm)

100 inch (2 540 mm)

108 inch (2 743 mm)

116 inch (2 946 mm)

48 inch (1 219 mm) belt width

52 inch (1 321 mm)

60 inch (1 524 mm)

68 inch (1 727 mm)

76 inch (1 930 mm)

84 inch (2 134 mm)

92 inch (2 337 mm)

100 inch (2 540 mm)

108 inch (2 743 mm)

116 inch (2 946 mm)

7MH7300-



4 A

4 B

4 C

4 D

4 E

4 F

4 G

4 H

4 J

5 A

5 B

5 C

5 D

5 E

5 F

5 G

5 H

5 J

6 A

6 B

6 C

6 D

6 E

6 F

6 G

6 H

6 J

Selection and ordering data	Article No.		Article No.
SITRANS WW200 Weighfeeder, painted mild steel, open style Accuracy is $\pm 0.5\%$ or better, with capacity up to 120 m ³ /h (4 237 ft ³ /h).	7MH7300-		7MH7300-
Material containment construction None Add order code Y74 and plain text: "Arc radius in inches ... XX.XXX inch" for options D ... L. <u>Shear gate inlet</u> Skirtboards 304 stainless steel Skirtboards 304 stainless steel, with cover Skirtboards 304 stainless steel, #4 polished Skirtboards 304 stainless steel, #4 polished with cover Skirtboards 316L stainless steel Skirtboards 316L stainless steel, with cover Skirtboards 316L stainless steel, #4 polished Skirtboards 316L stainless steel, #4 polished with cover <u>Horseshoe inlet</u> 304 stainless steel 304 stainless steel, #4 polished 316L stainless steel 316L stainless steel, #4 polished	A D E F G H J K L M N P Q		
Load cell <u>Nickel plated steel</u> 10 kg (22 lb) 15 kg (33 lb) 20 kg (44 lb) 30 kg (66 lb) 50 kg (110 lb) <u>Stainless steel, hermetically sealed</u> 6 kg (13.2 lb) 12 kg (26.5 lb) 30 kg (66.1 lb)	0 1 2 3 4 5 6 7		
Speed sensor <u>Shaft mounted</u> 1 000 PPR optical encoder 2 500 PPR optical encoder 1 000 PPR optical encoder, stainless steel 2 500 PPR optical encoder, stainless steel	1 2 4 5		
SITRANS WW200 Weighfeeder, painted mild steel, open style Accuracy is $\pm 0.5\%$ or better, with capacity up to 120 m ³ /h (4 237 ft ³ /h).			7MH7300-
Drive configuration Add order code Y75 (reduction ratio) and Y76 (electrical style). <u>Standard AC motor</u> 0.5 HP (0.37 kW) 220 ... 240/380 ... 480 V 3 ph 50/60 Hz 0.5 HP (0.37 kW) 575 V 3 ph 60 Hz 1 HP (0.75 kW) 220 ... 240/380 ... 480 V 3 ph 50/60 Hz 1 HP (0.75 kW) 575 V 3 ph 60 Hz			0 C 0 D 0 G 0 H
<u>Food grade AC motor</u> 0.25 HP (0.18 kW) 220 ... 240/380 ... 480 V 3 ph 50/60 Hz 0.25 HP (0.18 kW) 575 V 3 ph 60 Hz 0.5 HP (0.37 kW) 220 ... 240/380 ... 480 V 3 ph 50/60 Hz 0.5 HP (0.37 kW) 575 V 3 ph 60 Hz 0.75 HP (0.55 kW) 220 ... 240/380 ... 480 V 3 ph 50/60 Hz 0.75 HP (0.55 kW) 575 V 3 ph 60 Hz 1 HP (0.75 kW) 220 ... 240/380 ... 480 V 3 ph 50/60 Hz 1 HP (0.75 kW) 575 V 3 ph 60 Hz			4 A 4 B 4 C 4 D 4 E 4 F 4 G 4 H
Belting Polyurethane, 1.35 mm, anti-static, 2 ply, FDA approved Polyurethane, 1.35 mm, anti-static, 2 ply, FDA approved, with B-section flange walls Polyurethane, 1.35 mm, anti-static, 2 ply, FDA approved, with 2 inch (50 mm) corrugated side walls Silicone, HT 177 °C (350 °F), anti-static 45 PIW, 2 ply, FDA approved Polyurethane, 2.9 mm, anti-static, 2 ply, FDA approved Polyurethane, 2.9 mm, anti-static, 2 ply, FDA approved, with B-section flange walls Polyurethane, 2.9 mm, anti-static, 2 ply, FDA approved, with 2 inch (50 mm) corrugated side walls			A B C D K L M
Belt change access side (looking from inlet to discharge) Left hand Right hand			0 1

Weighfeeders

SITRANS WW200

Open style

Selection and ordering data

Order Code

Order code

Further designs

Please add **"-Z"** to article no. and specify order code(s).

Application Eng. reference number (max. 15 characters), specify in plain text

Y31

Shear gate arc radius: Enter shear gate arc radius in inches (xxx.xx inch)¹⁾

Y74

Enter design units (TPH, MTPH, lb/h, kg/h)

Y71

Enter design speed (ft/m, m/s)

Y72

Enter design capacity/rate

Y73

AC gearmotor reduction ratio: Enter reduction ratio in plain text (X:1)

Y75

AC gearmotor electrical style: enter IEC, UL-R/CSA or CCC style

Y76

Center material bed depth

Y77

Custom length: Select next longest option and specify infeed CL to discharge CL in plain text (indicated inches or millimeters)

Y01

Manufacturer's test certificate: according to EN 10204-2.2

C11

Stainless steel tag [69 x 50 mm (2.71 x 1.97 inch)]: Measuring-point number/identification (max. 27 characters) specify in plain text

Y15

Class I, Div. 1, Groups C and D; Class II, Div. 1, Groups F and G, approved electrical components; without junction boxes

E90

ATEX II 2D approved electrical components; only available with speed encoder option 1 and 2; with Aluminum junction boxes

E91

ATEX II 2D approved electrical components; only available with speed encoder option 4 and 5; with Stainless steel junction boxes

E92

ATEX II 3D approved electrical components; only available with speed encoder option 1 and 2; with Aluminum junction boxes

E93

Note: weighfeeder does not carry hazardous approval, only motor, loadcells, speed encoder, and tracking switches; approval not available with load cell options 0 ... 4 or motor options 4C ... 4H³⁾

Plastic shear curtain to control dust at the infeed for floodable materials and dusty applications¹⁾

G11

Pointek CLS100 Capacitance switch for plugged discharge chute detection

G12

Belt cleaner, stainless steel, nylon brush, mounted under belt plow, cleaning dirty side of belt

G14

Blue colored belt, anti-static, 2ply FDA approved⁴⁾

G18

Secondary speed encoder at motor (not for hazardous areas; not suitable for use with integrator)

G19

Motor corrosion protection C5 acc. EN 12944 (available with standard AC motor)

G20

Food grade Polyurethane sealing at infeed area

G22

Discharge dust hood, painted mild steel with de-dust port

H50

Discharge dust hood, 304 stainless steel with de-dust port

H51

Discharge dust hood, 316L stainless steel with de-dust port

H52

Custom design

Y99

Specify quote reference when ordering

Operating instructions

All literature is available to download for free, in a range of languages, at

<http://www.siemens.com/weighing/documentation>

¹⁾ Available with material containment options D ... L only.

²⁾ 575 V versions meet 4:1 ct inverter rating, all other voltages meet 10:1.

³⁾ Available with drive configuration standard motor options only, all motors suitable for 400 V operation only.

⁴⁾ Available only with Belting options A, B, and C.

Selection and ordering data	Article No.	Article No.
SITRANS WW200 Weighfeeder, 304 stainless steel, open style Accuracy is $\pm 0.5\%$ or better, with capacity up to 120 m ³ /h (4 237 ft ³ /h). Click on the Article No. for the online configuration in the PIA Life Cycle Portal. Add order code Y71 ... Y76 for all models to specify design data.	7MH7301- 	SITRANS WW200 Weighfeeder, 304 stainless steel, open style Accuracy is $\pm 0.5\%$ or better, with capacity up to 120 m ³ /h (4 237 ft ³ /h). 7MH7301-
304 stainless steel, open style, with C/L infeed to C/L discharge <u>12 inch (305 mm) belt width</u> 52 inch (1 321 mm) 0 A 60 inch (1 524 mm) 0 B 68 inch (1 727 mm) 0 C 76 inch (1 930 mm) 0 D 84 inch (2 134 mm) 0 E 92 inch (2 337 mm) 0 F 100 inch (2 540 mm) 0 G 108 inch (2 743 mm) 0 H 116 inch (2 946 mm) 0 J <u>18 inch (457 mm) belt width</u> 52 inch (1 321 mm) 1 A 60 inch (1 524 mm) 1 B 68 inch (1 727 mm) 1 C 76 inch (1 930 mm) 1 D 84 inch (2 134 mm) 1 E 92 inch (2 337 mm) 1 F 100 inch (2 540 mm) 1 G 108 inch (2 743 mm) 1 H 116 inch (2 946 mm) 1 J <u>24 inch (610 mm) belt width</u> 52 inch (1 321 mm) 2 A 60 inch (1 524 mm) 2 B 68 inch (1 727 mm) 2 C 76 inch (1 930 mm) 2 D 84 inch (2 134 mm) 2 E 92 inch (2 337 mm) 2 F 100 inch (2 540 mm) 2 G 108 inch (2 743 mm) 2 H 116 inch (2 946 mm) 2 J <u>30 inch (762 mm) belt width</u> 52 inch (1 321 mm) 3 A 60 inch (1 524 mm) 3 B 68 inch (1 727 mm) 3 C 76 inch (1 930 mm) 3 D 84 inch (2 134 mm) 3 E 92 inch (2 337 mm) 3 F 100 inch (2 540 mm) 3 G 108 inch (2 743 mm) 3 H 116 inch (2 946 mm) 3 J	<u>36 inch (914 mm) belt width</u> 52 inch (1 321 mm) 4 A 60 inch (1 524 mm) 4 B 68 inch (1 727 mm) 4 C 76 inch (1 930 mm) 4 D 84 inch (2 134 mm) 4 E 92 inch (2 337 mm) 4 F 100 inch (2 540 mm) 4 G 108 inch (2 743 mm) 4 H 116 inch (2 946 mm) 4 J <u>42 inch (1 067 mm) belt width</u> 52 inch (1 321 mm) 5 A 60 inch (1 524 mm) 5 B 68 inch (1 727 mm) 5 C 76 inch (1 930 mm) 5 D 84 inch (2 134 mm) 5 E 92 inch (2 337 mm) 5 F 100 inch (2 540 mm) 5 G 108 inch (2 743 mm) 5 H 116 inch (2 946 mm) 5 J <u>48 inch (1 219 mm) belt width</u> 52 inch (1 321 mm) 6 A 60 inch (1 524 mm) 6 B 68 inch (1 727 mm) 6 C 76 inch (1 930 mm) 6 D 84 inch (2 134 mm) 6 E 92 inch (2 337 mm) 6 F 100 inch (2 540 mm) 6 G 108 inch (2 743 mm) 6 H 116 inch (2 946 mm) 6 J	

Weighfeeders**SITRANS WW200****Open style****Selection and ordering data****SITRANS WW200 Weighfeeder, 304 stainless steel, open style**

Accuracy is $\pm 0.5\%$ or better, with capacity up to 120 m³/h (4 237 ft³/h).

Material containment construction

None

Add order code Y74 and plain text: "Arc radius in inches ... XX.XXX" for options D ... L

Shear gate inlet

Skirtboards 304 stainless steel

Skirtboards 304 stainless steel, with cover

Skirtboards 304 stainless steel, #4 polished

Skirtboards 304 stainless steel, #4 polished with cover

Skirtboards 316L stainless steel

Skirtboards 316L stainless steel, with cover

Skirtboards 316L stainless steel, #4 polished

Skirtboards 316L stainless steel, #4 polished with cover

Horseshoe inlet

304 stainless steel

304 stainless steel, #4 polished

316L stainless steel

316L stainless steel, #4 polished

Load cell

6 kg (13.2 lb) stainless steel, hermetically sealed

12 kg (26.5 lb) stainless steel, hermetically sealed

30 kg (66.1 lb) stainless steel, hermetically sealed

Speed sensorShaft mounted

1 000 PPR optical encoder

2 500 PPR optical encoder

1 000 PPR optical encoder, stainless steel

2 500 PPR optical encoder, stainless steel

Article No.

7MH7301-**A****D****E****F****G****H****J****K****L****M****N****P****Q****5****6****7****1****2****4****5**

Article No.

7MH7301-**SITRANS WW200 Weighfeeder, 304 stainless steel, open style**

Accuracy is $\pm 0.5\%$ or better, with capacity up to 120 m³/h (4 237 ft³/h).

Drive configuration

Add order code Y75 (reduction ratio) and Y76 (electrical style).

Standard AC motor

0.5 HP (0.37 kW)

220 ... 240/380 ... 480 V 3 ph 50/60 Hz

0.5 HP (0.37 kW) 575 V 3 ph 60 Hz

1 HP (0.75 kW)

220 ... 240/380 ... 480 V 3 ph 50/60 Hz

1 HP (0.75 kW) 575 V 3 ph 60 Hz

Food grade AC motor

0.25 HP (0.18 kW) 220 ... 240/380 ... 480 V 3 ph 50/60 Hz

0.25 HP (0.18 kW) 575 V 3 ph 60 Hz

0.5 HP (0.37 kW) 220 ... 240/380 ... 480 V 3 ph 50/60 Hz

0.5 HP (0.37 kW) 575 V 3 ph 60 Hz

0.75 HP (0.55 kW) 220 ... 240/380 ... 480 V 3 ph 50/60 Hz

0.75 HP (0.55 kW) 575 V 3 ph 60 Hz

1 HP (0.75 kW) 220 ... 240/380 ... 480 V 3 ph 50/60 Hz

1 HP (0.75 kW) 575 V 3 ph 60 Hz

Belting

Polyurethane, 1.35 mm, anti-static, 2 ply, FDA approved

Polyurethane, 1.35 mm, anti-static, 2 ply, FDA approved, with B-section flange walls

Polyurethane, 1.35 mm, anti-static, 2 ply, FDA approved, with 2 inch (50 mm) corrugated side walls

Silicone, HT 177 °C (350 °F), anti-static 45 PIW, 2 ply, FDA approved

Polyurethane, 2.9 mm, anti-static, 2 ply, FDA approved

Polyurethane, 2.9 mm, anti-static, 2 ply, FDA approved, with B-section flange walls

Polyurethane, 2.9 mm, anti-static, 2 ply, FDA approved, with 2 inch (50 mm) corrugated side walls

Belt change access side (looking from inlet to discharge)

Left hand

Right hand

0 C**0 D****0 G****0 H****4 A****4 B****4 C****4 D****4 E****4 F****4 G****4 H****A****B****C****D****K****L****M****0****1**

Selection and ordering data

Order code

<i>Further designs</i>	
Please add "-Z" to article no. and specify order code(s).	
Application Eng. reference number (max. 15 characters), specify in plain text.	Y31
Shear gate arc radius: Enter shear gate arc radius in inches (xxx.xx inch)	Y74
Enter design units (TPH, MTPH, lb/h, kg/h)	Y71
Enter design speed (ft/m, m/s)	Y72
Enter design capacity/rate	Y73
AC gearmotor reduction ratio: Enter reduction ratio in plain text (X:1)	Y75
AC gearmotor electrical style: enter IEC, UL-R/CSA or CCC style	Y76
Center material bed depth	Y77
Custom length: Select next longest option and specify infeed CL to discharge CL in plain text (indicated inches or millimeters)	Y01
Manufacturer's test certificate: According to EN 10204-2.2	C11
Stainless steel tag [69 x 50 mm (2.71 x 1.97 inch)]: Measuring-point number/identification (max. 27 characters) specify in plain text	Y15
Class I, Div. 1, Groups C and D; Class II, Div. 1, Groups F and G, approved electrical components; without junction boxes	E90
ATEX II 2D approved electrical components; only available with speed encoder option 1 and 2; with Aluminum junction boxes	E91
ATEX II 2D approved electrical components; only available with speed encoder option 4 and 5; with Stainless steel junction boxes	E92
ATEX II 3D approved electrical components; only available with speed encoder option 1 and 2; with Aluminum junction boxes	E93
Note: weighfeeder does not carry hazardous approval, only motor, loadcells, speed encoder, and tracking switches; approval not available with load cell options 0 ... 4 or motor options 4C ... 4H ³⁾	
Plastic shear curtain to control dust at the infeed for floodable materials and dusty applications ¹⁾	G11
Pointek CLS100 Capacitance switch for plugged discharge chute detection	G12
Belt cleaner, stainless steel, nylon brush, mounted under belt plow, cleaning dirty side of belt	G14
Blue colored belt, anti-static, 2 ply, FDA approved ⁴⁾	G18
Secondary speed encoder at motor (not for hazardous areas; not suitable for use with integrator)	G19
Motor corrosion protection C5 acc. EN 12944 (available with standard AC motor)	G20
Food grade Polyurethane sealing at infeed area	G22
Discharge dust hood, painted mild steel with de-dust port	H50
Discharge dust hood, 304 stainless steel with de-dust port	H51
Discharge dust hood, 316L stainless steel with de-dust port	H52
Custom design	Y99
Specify quote reference when ordering	

Operating instructions

All literature is available to download for free, in a range of languages, at

<http://www.siemens.com/weighing/documentation>

¹⁾ Available with material containment options D ... L only.

²⁾ 575 V versions meet 4:1 ct inverter rating, all other voltages meet 10:1.

³⁾ Available with Drive Configuration standard motor options only, all motors. suitable for 400 V operation only.

⁴⁾ Available only with Belting options A, B, and C.

Weighfeeders**SITRANS WW200****Open style****Selection and ordering data****SITRANS WW200 Weighfeeder, 316L stainless steel, open style**

Accuracy is $\pm 0.5\%$ or better, with capacity up to 120 m³/h (4 237 ft³/h).

➤ Click on the Article No. for the online configuration in the PIA Life Cycle Portal.

Add order code Y71 ... Y76 for all models to specify design data.

316L stainless steel, open style, with C/L infeed to C/L discharge12 inch (305 mm) belt width

52 inch (1 321 mm)

60 inch (1 524 mm)

68 inch (1 727 mm)

76 inch (1 930 mm)

84 inch (2 134 mm)

92 inch (2 337 mm)

100 inch (2 540 mm)

108 inch (2 743 mm)

116 inch (2 946 mm)

18 inch (457 mm) belt width

52 inch (1 321 mm)

60 inch (1 524 mm)

68 inch (1 727 mm)

76 inch (1 930 mm)

84 inch (2 134 mm)

92 inch (2 337 mm)

100 inch (2 540 mm)

108 inch (2 743 mm)

116 inch (2 946 mm)

24 inch (610 mm) belt width

52 inch (1 321 mm)

60 inch (1 524 mm)

68 inch (1 727 mm)

76 inch (1 930 mm)

84 inch (2 134 mm)

92 inch (2 337 mm)

100 inch (2 540 mm)

108 inch (2 743 mm)

116 inch (2 946 mm)

30 inch (762 mm) belt width

52 inch (1 321 mm)

60 inch (1 524 mm)

68 inch (1 727 mm)

76 inch (1 930 mm)

84 inch (2 134 mm)

92 inch (2 337 mm)

100 inch (2 540 mm)

108 inch (2 743 mm)

116 inch (2 946 mm)

Article No.

7MH7302-**0 A****0 B****0 C****0 D****0 E****0 F****0 G****0 H****0 J****1 A****1 B****1 C****1 D****1 E****1 F****1 G****1 H****1 J****2 A****2 B****2 C****2 D****2 E****2 F****2 G****2 H****2 J****3 A****3 B****3 C****3 D****3 E****3 F****3 G****3 H****3 J****SITRANS WW200 Weighfeeder, 316L stainless steel, open style**

Accuracy is $\pm 0.5\%$ or better, with capacity up to 120 m³/h (4 237 ft³/h).

36 inch (914 mm) belt width

52 inch (1 321 mm)

60 inch (1 524 mm)

68 inch (1 727 mm)

76 inch (1 930 mm)

84 inch (2 134 mm)

92 inch (2 337 mm)

100 inch (2 540 mm)

108 inch (2 743 mm)

116 inch (2 946 mm)

42 inch (1 067 mm) belt width

52 inch (1 321 mm)

60 inch (1 524 mm)

68 inch (1 727 mm)

76 inch (1 930 mm)

84 inch (2 134 mm)

92 inch (2 337 mm)

100 inch (2 540 mm)

108 inch (2 743 mm)

116 inch (2 946 mm)

48 inch (1 219 mm) belt width

52 inch (1 321 mm)

60 inch (1 524 mm)

68 inch (1 727 mm)

76 inch (1 930 mm)

84 inch (2 134 mm)

92 inch (2 337 mm)

100 inch (2 540 mm)

108 inch (2 743 mm)

116 inch (2 946 mm)

Article No.

7MH7302-**4 A****4 B****4 C****4 D****4 E****4 F****4 G****4 H****4 J****5 A****5 B****5 C****5 D****5 E****5 F****5 G****5 H****5 J****6 A****6 B****6 C****6 D****6 E****6 F****6 G****6 H****6 J**

Selection and ordering data	Article No.	Article No.	
<p>SITRANS WW200 Weighfeeder, 316L stainless steel, open style Accuracy is ± 0.5 % or better, with capacity up to 120 m³/h (4 237 ft³/h).</p> <p>Material containment construction</p> <p>None</p> <p>Add order code Y74 and plain text: "Arc radius in inches ... XX.XXX inch" for options H ... L</p> <p><u>Shear gate inlet</u></p> <p>Skirtboards 316L stainless steel</p> <p>Skirtboards 316L stainless steel, with cover</p> <p>Skirtboards 316L stainless steel, #4 polished</p> <p>Skirtboards 316L stainless steel, #4 polished with cover</p> <p><u>Horseshoe inlet</u></p> <p>316L stainless steel</p> <p>316L stainless steel, #4 polished</p> <p>Load cell</p> <p>6 kg (13.2 lb) stainless steel, hermetically sealed</p> <p>12 kg (26.5 lb) stainless steel, hermetically sealed</p> <p>30 kg (66.1 lb) stainless steel, hermetically sealed</p> <p>Speed sensor</p> <p><u>Shaft mounted</u></p> <p>1 000 PPR optical encoder</p> <p>2 500 PPR optical encoder</p> <p>1 000 PPR optical encoder, stainless steel</p> <p>2 500 PPR optical encoder, stainless steel</p> <p>Drive configuration</p> <p>Add order code Y75 (reduction ratio) and Y76 (electrical style).</p> <p><u>Standard AC motor</u></p> <p>0.5 HP (0.37 kW) 220 ... 240/380 ... 480 V 3 ph 50/60 Hz</p> <p>0.5 HP (0.37 kW) 575 V 3 ph 60 Hz</p> <p>1 HP (0.75 kW) 220 ... 240/380 ... 480 V 3 ph 50/60 Hz</p> <p>1 HP (0.75 kW) 575 V 3 ph 60 Hz</p> <p><u>Food grade AC motor</u></p> <p>0.25 HP (0.18 kW) 220 ... 240/380 ... 480 V 3 ph 50/60 Hz</p> <p>0.25 HP (0.18 kW) 575 V 3 ph 60 Hz</p> <p>0.5 HP (0.37 kW) 220 ... 240/380 ... 480 V 3 ph 50/60 Hz</p> <p>0.5 HP (0.37 kW) 575 V 3 ph 60 Hz</p> <p>0.75 HP (0.55 kW) 220 ... 240/380 ... 480 V 3 ph 50/60 Hz</p> <p>0.75 HP (0.55 kW) 575 V 3 ph 60 Hz</p> <p>1 HP (0.75 kW) 220 ... 240/380 ... 480 V 3 ph 50/60 Hz</p> <p>1 HP (0.75 kW) 575 V 3 ph 60 Hz</p>	<p>7MH7302-</p> <p>A</p> <p>H</p> <p>J</p> <p>K</p> <p>L</p> <p>P</p> <p>Q</p> <p>5</p> <p>6</p> <p>7</p> <p>1</p> <p>2</p> <p>4</p> <p>5</p> <p>0 C</p> <p>0 D</p> <p>0 G</p> <p>0 H</p> <p>4 A</p> <p>4 B</p> <p>4 C</p> <p>4 D</p> <p>4 E</p> <p>4 F</p> <p>4 G</p> <p>4 H</p>	<p>SITRANS WW200 Weighfeeder, 316L stainless steel, open style Accuracy is ± 0.5 % or better, with capacity up to 120 m³/h (4 237 ft³/h).</p> <p>Belting</p> <p>Polyurethane, 1.35 mm, anti-static, 2 ply, FDA approved</p> <p>Polyurethane, 1.35 mm, anti-static, 2 ply, FDA approved, with B-section flange walls</p> <p>Polyurethane, 1.35 mm, anti-static, 2 ply, FDA approved, with 2 inch (50 mm) corrugated side walls</p> <p>Silicone, HT 177 °C (350 °F), anti-static 45 PIW, 2 ply, FDA approved Available only with Belting options A, B, and C.</p> <p>Polyurethane, 2.9 mm, anti-static, 2 ply, FDA approved</p> <p>Polyurethane, 2.9 mm, anti-static, 2 ply, FDA approved, with B-section flange walls</p> <p>Polyurethane, 2.9 mm, anti-static, 2 ply, FDA approved, with 2 inch (50 mm) corrugated side walls</p> <p>Belt change access side (looking from inlet to discharge)</p> <p>Left hand</p> <p>Right hand</p>	<p>7MH7302-</p> <p>A</p> <p>B</p> <p>C</p> <p>D</p> <p>K</p> <p>L</p> <p>M</p> <p>0</p> <p>1</p>

Weighfeeders**SITRANS WW200****Open style****Selection and ordering data**

Order code

Further designsPlease add **"-Z"** to article no. and specify order code(s).

Application Eng. reference number (max. 15 characters), specify in plain text.	Y31
Shear gate arc radius: Enter shear gate arc radius in inches (xxx.xx inch) ¹⁾	Y74
Enter design units (TPH, MTPH, lb/h, kg/h)	Y71
Enter design speed (ft/m, m/s)	Y72
Enter design capacity/rate	Y73
AC gearmotor reduction ratio: Enter reduction ratio in plain text (X:1)	Y75
AC gearmotor electrical style: enter IEC, UL-R/CSA or CCC style	Y76
Center material bed depth	Y77
Custom length: Select next longest option and specify infeed CL to discharge CL in plain text (indicated inches or millimeters)	Y01
Manufacturer's test certificate: According to EN 10204-2.2	C11
Stainless steel tag [69 x 50 mm (2.71 x 1.97 inch)]: Measuring-point number/identification (max. 27 characters) specify in plain text	Y15
Class I, Div. 1, Groups C and D; Class II, Div. 1, Groups F and G, approved electrical components; without junction boxes	E90
ATEX II 2D approved electrical components; only available with speed encoder option 1 and 2; with Aluminum junction boxes	E91
ATEX II 2D approved electrical components; only available with speed encoder option 4 and 5; with Stainless steel junction boxes	E92
ATEX II 3D approved electrical components; only available with speed encoder option 1 and 2; with Aluminum junction boxes	E93
Note: weighfeeder does not carry hazardous approval, only motor, loadcells, speed encoder, and tracking switches; approval not available with load cell options 0 ... 4 or motor options 4C ... 4H ³⁾	
Plastic shear curtain to control dust at the infeed for floodable materials and dusty applications ¹⁾	G11
Pointek CLS100 Capacitance switch for plugged discharge chute detection	G12
Belt cleaner, stainless steel, nylon brush, mounted under belt plow, cleaning dirty side of belt	G14
Blue colored belt, anti-static, 2 ply, FDA approved ⁴⁾	G18
Secondary speed encoder at motor (not for hazardous areas; not suitable for use with integrator)	G19
Motor corrosion protection C5 acc. EN 12944 (available with standard AC motor)	G20
Food grade Polyurethane sealing at infeed area	G22
Discharge dust hood, painted mild steel with de-dust port	H50
Discharge dust hood, 304 stainless steel with de-dust port	H51
Discharge dust hood, 316L stainless steel with de-dust port	H52
Custom design	Y99
Specify quote reference when ordering	

Operating instructions

All literature is available to download for free, in a range of languages, at


<http://www.siemens.com/weighing/documentation>

1) Available with material containment options D ... L only.

2) 575 V versions meet 4:1 ct inverter rating, all other voltages meet 10:1.

3) Available with Drive Configuration standard motor options only, all motors suitable for 400 V operation only.

4) Available only with Belting options A, B, and C.

Selection and ordering data	Article No.	Article No.
SITRANS WW200 Weighfeeder, painted mild steel, enclosed style: Accuracy is $\pm 0.5\%$ or better, with capacity up to 120 m ³ /h (4 237 ft ³ /h). Click on the Article No. for the online configuration in the PIA Life Cycle Portal.	7MH7303- 	SITRANS WW200 Weighfeeder, painted mild steel, enclosed style Accuracy is $\pm 0.5\%$ or better, with capacity up to 120 m ³ /h (4 237 ft ³ /h).
Add order code Y71 ... Y76 for all models to specify design data.		36 inch (914 mm) belt width
Painted mild steel frame with painted mild steel enclosure style with C/L infeed to C/L discharge 12 inch (305 mm) belt width 52 inch (1 321 mm) 60 inch (1 524 mm) 68 inch (1 727 mm) 76 inch (1 930 mm) 84 inch (2 134 mm) 92 inch (2 337 mm) 100 inch (2 540 mm) 108 inch (2 743 mm) 116 inch (2 946 mm)	0 A 0 B 0 C 0 D 0 E 0 F 0 G 0 H 0 J	52 inch (1 321 mm) 60 inch (1 524 mm) 68 inch (1 727 mm) 76 inch (1 930 mm) 84 inch (2 134 mm) 92 inch (2 337 mm) 100 inch (2 540 mm) 108 inch (2 743 mm) 116 inch (2 946 mm)
18 inch (457 mm) belt width 52 inch (1 321 mm) 60 inch (1 524 mm) 68 inch (1 727 mm) 76 inch (1 930 mm) 84 inch (2 134 mm) 92 inch (2 337 mm) 100 inch (2 540 mm) 108 inch (2 743 mm) 116 inch (2 946 mm)	1 A 1 B 1 C 1 D 1 E 1 F 1 G 1 H 1 J	42 inch (1 067 mm) belt width 52 inch (1 321 mm) 60 inch (1 524 mm) 68 inch (1 727 mm) 76 inch (1 930 mm) 84 inch (2 134 mm) 92 inch (2 337 mm) 100 inch (2 540 mm) 108 inch (2 743 mm) 116 inch (2 946 mm)
24 inch (610 mm) belt width 52 inch (1 321 mm) 60 inch (1 524 mm) 68 inch (1 727 mm) 76 inch (1 930 mm) 84 inch (2 134 mm) 92 inch (2 337 mm) 100 inch (2 540 mm) 108 inch (2 743 mm) 116 inch (2 946 mm)	2 A 2 B 2 C 2 D 2 E 2 F 2 G 2 H 2 J	48 inch (1 219 mm) belt width 52 inch (1 321 mm) 60 inch (1 524 mm) 68 inch (1 727 mm) 76 inch (1 930 mm) 84 inch (2 134 mm) 92 inch (2 337 mm) 100 inch (2 540 mm) 108 inch (2 743 mm) 116 inch (2 946 mm)
30 inch (762 mm) belt width 52 inch (1 321 mm) 60 inch (1 524 mm) 68 inch (1 727 mm) 76 inch (1 930 mm) 84 inch (2 134 mm) 92 inch (2 337 mm) 100 inch (2 540 mm) 108 inch (2 743 mm)	3 A 3 B 3 C 3 D 3 E 3 F 3 G 3 H	4 J 5 A 5 B 5 C 5 D 5 E 5 F 5 G 5 H 5 J 6 A 6 B 6 C 6 D 6 E 6 F 6 G 6 H 6 J

Weighfeeders**SITRANS WW200****Enclosed style****Selection and ordering data****SITRANS WW200 Weighfeeder, painted mild steel, enclosed style:**

Accuracy is $\pm 0.5\%$ or better, with capacity up to 120 m³/h (4 237 ft³/h).

Material containment construction

Add order code Y74 and plain text: "Arc radius in inches ... XX.XXX inch" for options D ... L

Shear gate inlet

Skirtboards 304 stainless steel

Skirtboards 304 stainless steel, with cover

Skirtboards 304 stainless steel, #4 polished

Skirtboards 304 stainless steel, #4 polished with cover

Skirtboards 316L stainless steel

Skirtboards 316L stainless steel, with cover

Skirtboards 316L stainless steel, #4 polished

Skirtboards 316L stainless steel, #4 polished with cover

Load cellNickel plated steel

10 kg (22 lb)

15 kg (33 lb)

20 kg (44 lb)

30 kg (66 lb)

50 kg (110 lb)

Stainless steel

6 kg (13.2 lb) hermetically sealed

12 kg (26.5 lb) hermetically sealed

30 kg (66.1 lb) hermetically sealed

Speed sensorShaft mounted

1 000 PPR optical encoder

2 500 PPR optical encoder

1 000 PPR optical encoder, stainless steel

2 500 PPR optical encoder, stainless steel

Article No.

7MH7303-**D****E****F****G****H****J****K****L****0****1****2****3****4****5****6****7****1****2****4****5**

Article No.

7MH7303-**0 C****0 D****0 G****0 H****4 A****4 B****4 C****4 D****4 E****4 F****4 G****4 H****4 A****4 B****4 C****4 D****4 E****4 F****4 G****4 H****A****B****C****D****K****L****M****0****1****SITRANS WW200 Weighfeeder, painted mild steel, enclosed style**

Accuracy is $\pm 0.5\%$ or better, with capacity up to 120 m³/h (4 237 ft³/h).

Drive configuration

Add order code Y75 (reduction ratio) and Y76 (electrical style).

Standard AC motor

0.5 HP (0.37 kW)

220 ... 240/380 ... 480 V 3 ph 50/60 Hz

0.5 HP (0.37 kW) 575 V 3 ph 60 Hz

1 HP (0.75 kW)

220 ... 240/380 ... 480 V 3 ph 50/60 Hz

1 HP (0.75 kW) 575 V 3 ph 60 Hz

Food grade AC motor

0.25 HP (0.18 kW) 220 ... 240/380 ... 480 V 3 ph 50/60 Hz

0.25 HP (0.18 kW) 575 V 3 ph 60 Hz

0.5 HP (0.37 kW) 220 ... 240/380 ... 480 V 3 ph 50/60 Hz

0.5 HP (0.37 kW) 575 V 3 ph 60 Hz

0.75 HP (0.55 kW) 220 ... 240/380 ... 480 V 3 ph 50/60 Hz

0.75 HP (0.55 kW) 575 V 3 ph 60 Hz

1 HP (0.75 kW) 220 ... 240/380 ... 480 V 3 ph 50/60 Hz

1 HP (0.75 kW) 575 V 3 ph 60 Hz

Belting

Polyurethane, 1.35 mm, anti-static, 2 ply, FDA approved

Polyurethane, 1.35 mm, anti-static, 2 ply, FDA approved, with B-section flange walls

Polyurethane, 1.35 mm, anti-static, 2 ply, FDA approved, with 2 inch (50 mm) corrugated side walls

Silicone, HT 177 °C (350 °F), anti-static 45 PIW, 2 ply, FDA approved

Polyurethane, 2.9 mm, anti-static, 2 ply, FDA approved

Polyurethane, 2.9 mm, anti-static, 2 ply, FDA approved, with B-section flange walls

Polyurethane, 2.9 mm, anti-static, 2 ply, FDA approved, with 2 inch (50 mm) corrugated side walls

Belt change access side (looking from inlet to discharge)

Left hand

Right hand

0**1**

Selection and ordering data	Order code
Further designs	
Please add "-Z" to article no. and specify order code(s).	
Application eng. reference number (max. 15 characters), specify in plain text.	Y31
Shear gate arc radius: Enter shear gate arc radius in inches (xxx.xx inch) ¹⁾	Y74
Enter design units (TPH, MTPH, lb/h, kg/h)	Y71
Enter design speed (ft/m, m/s)	Y72
Enter design capacity/rate	Y73
AC gearmotor reduction ratio: Enter reduction ratio in plain text (X:1)	Y75
AC gearmotor electrical style: enter IEC, UL-R/CSA or CCC style	Y76
Center material bed depth	Y77
Custom length: Select next longest option and specify infeed CL to discharge CL in plain text (indicated inches or millimeters)	Y01
Manufacturer's test certificate: according to EN 10204-2.2	C11
Stainless steel tag [69 x 50 mm (2.71 x 1.97 inch)]: Measuring-point number/identification (max. 27 characters) specify in plain text	Y15
Class I, Div. 1, Groups C and D; Class II, Div. 1, Groups F and G, approved electrical components; without junction boxes	E90
ATEX II 2D approved electrical components; only available with speed encoder option 1 and 2; with Aluminum junction boxes	E91
ATEX II 2D approved electrical components; only available with speed encoder option 4 and 5; with Stainless steel junction boxes	E92
ATEX II 3D approved electrical components; only available with speed encoder option 1 and 2; with Aluminum junction boxes	E93
Note: weighfeeder does not carry hazardous approval, only motor, loadcells, speed encoder, and tracking switches; approval not available with load cell options 0 ... 4 or motor options 4C ... 4H ³⁾	
Plastic shear curtain to control dust at the infeed for floodable materials and dusty applications ¹⁾	G11
Pointek CLS100 Capacitance switch for plugged discharge chute detection	G12
Belt cleaner, stainless steel, nylon brush, mounted under belt plow, cleaning dirty side of belt	G14
Blue colored belt, anti-static, 2 ply, FDA approved ⁴⁾	G18
Secondary speed encoder at motor (not for hazardous areas; not suitable for use with integrator)	G19
Motor corrosion protection C5 acc. EN 12944 (available with standard AC motor)	G20
Food grade Polyurethane sealing at infeed area	G22
Custom design	Y99
Specify quote reference when ordering	
Operating instructions	
All literature is available to download for free, in a range of languages, at	
http://www.siemens.com/weighing/documentation	

¹⁾ Available with material containment options D ... L only.

²⁾ 575 V versions meet 4:1 ct inverter rating, all other voltages meet 10:1.

³⁾ Available with Drive Configuration standard motor options only, all motors suitable for 400 V operation only.

⁴⁾ Available only with Belting options A, B, and C.

Weighfeeders**SITRANS WW200****Enclosed style****Selection and ordering data**

SITRANS WW200 Weighfeeder, 304 stainless steel frame with painted mild steel enclosure
Accuracy is $\pm 0.5\%$ or better, with capacity up to 120 m³/h (4 237 ft³/h).

➤ Click on the Article No. for the online configuration in the PIA Life Cycle Portal.

Add order code Y71 ... Y76 for all models to specify design data.

304 stainless steel frame with painted mild steel enclosure style with C/L infeed to C/L discharge

12 inch (305 mm) belt width

52 inch (1 321 mm)
60 inch (1 524 mm)
68 inch (1 727 mm)
76 inch (1 930 mm)
184 inch (2 134 mm)
92 inch (2 337 mm)
100 inch (2 540 mm)
108 inch (2 743 mm)
116 inch (2 946 mm)

18 inch (457 mm) belt width

52 inch (1 321 mm)
60 inch (1 524 mm)
68 inch (1 727 mm)
76 inch (1 930 mm)
84 inch (2 134 mm)
92 inch (2 337 mm)
100 inch (2 540 mm)
108 inch (2 743 mm)
116 inch (2 946 mm)

24 inch (610 mm) belt width

52 inch (1 321 mm)
60 inch (1 524 mm)
68 inch (1 727 mm)
76 inch (1 930 mm)
84 inch (2 134 mm)
92 inch (2 337 mm)
100 inch (2 540 mm)
108 inch (2 743 mm)
116 inch (2 946 mm)

30 inch (762 mm) belt width

52 inch (1 321 mm)
60 inch (1 524 mm)
68 inch (1 727 mm)
76 inch (1 930 mm)
84 inch (2 134 mm)
92 inch (2 337 mm)
100 inch (2 540 mm)
108 inch (2 743 mm)
116 inch (2 946 mm)

Article No.

7MH7304-

0 A
0 B
0 C
0 D
0 E
0 F
0 G
0 H
0 J
1 A
1 B
1 C
1 D
1 E
1 F
1 G
1 H
1 J

2 A
2 B
2 C
2 D
2 E
2 F
2 G
2 H
2 J

3 A
3 B
3 C
3 D
3 E
3 F
3 G
3 H
3 J

SITRANS WW200 Weighfeeder, 304 stainless steel frame with painted mild steel enclosure
Accuracy is $\pm 0.5\%$ or better, with capacity up to 120 m³/h (4 237 ft³/h).

36 inch (914 mm) belt width

52 inch (1 321 mm)
60 inch (1 524 mm)
68 inch (1 727 mm)
76 inch (1 930 mm)
84 inch (2 134 mm)
92 inch (2 337 mm)
100 inch (2 540 mm)
108 inch (2 743 mm)
116 inch (2 946 mm)

42 inch (1 067 mm) belt width

52 inch (1 321 mm)
60 inch (1 524 mm)
68 inch (1 727 mm)
76 inch (1 930 mm)
84 inch (2 134 mm)
92 inch (2 337 mm)
100 inch (2 540 mm)
108 inch (2 743 mm)
116 inch (2 946 mm)

48 inch (1 219 mm) belt width

52 inch (1 321 mm)
60 inch (1 524 mm)
68 inch (1 727 mm)
76 inch (1 930 mm)
84 inch (2 134 mm)
92 inch (2 337 mm)
100 inch (2 540 mm)
108 inch (2 743 mm)
116 inch (2 946 mm)

Article No.

7MH7304-

4 A
4 B
4 C
4 D
4 E
4 F
4 G
4 H
4 J

5 A
5 B
5 C
5 D
5 E
5 F
5 G
5 H
5 J

6 A
6 B
6 C
6 D
6 E
6 F
6 G
6 H
6 J

Selection and ordering data	Article No.	Article No.
SITRANS WW200 Weighfeeder, 304 stainless steel frame with painted mild steel enclosure Accuracy is $\pm 0.5\%$ or better, with capacity up to 120 m ³ /h (4 237 ft ³ /h).	7MH7304-	7MH7304-
Material containment construction Add order code Y74 and plain text: "Arc radius in inches ... XX.XXX inch" for options D ... L <u>Shear gate inlet</u> Skirtboards 304 stainless steel Skirtboards 304 stainless steel, with cover Skirtboards 304 stainless steel, #4 polished Skirtboards 304 stainless steel, #4 polished with cover Skirtboards 316L stainless steel Skirtboards 316L stainless steel, with cover Skirtboards 316L stainless steel, #4 polished Skirtboards 316L stainless steel, #4 polished with cover	D E F G H J K L	A B C D K L M
Load cell 6 kg (13.2 lb) stainless steel, hermetically sealed 12 kg (26.5 lb) stainless steel, hermetically sealed 30 kg (66.1 lb) stainless steel, hermetically sealed	5 6 7	
Speed sensor <u>Shaft mounted</u> 1 000 PPR optical encoder 2 500 PPR optical encoder 1 000 PPR optical encoder, stainless steel 2 500 PPR optical encoder, stainless steel	1 2 4 5	
Drive configuration Add order code Y75 (reduction ratio) and Y76 (electrical style). <u>Standard AC motor</u> 0.5 HP (0.37 kW) 220 ... 240/380 ... 480 V 3 ph 50/60 Hz 0.5 HP (0.37 kW) 575 V 3 ph 60 Hz 1 HP (0.75 kW) 220 ... 240/380 ... 480 V 3 ph 50/60 Hz 1 HP (0.75 kW) 575 V 3 ph 60 Hz	0 C 0 D 0 G 0 H	
<u>Food grade AC motor</u> 0.25 HP (0.18 kW) 220 ... 240/380 ... 480 V 3 ph 50/60 Hz 0.25 HP (0.18 kW) 575 V 3 ph 60 Hz 0.5 HP (0.37 kW) 220 ... 240/380 ... 480 V 3 ph 50/60 Hz 0.5 HP (0.37 kW) 575 V 3 ph 60 Hz 0.75 HP (0.55 kW) 220 ... 240/380 ... 480 V 3 ph 50/60 Hz 0.75 HP (0.55 kW) 575 V 3 ph 60 Hz 1 HP (0.75 kW) 220 ... 240/380 ... 480 V 3 ph 50/60 Hz 1 HP (0.75 kW) 575 V 3 ph 60 Hz	4 A 4 B 4 C 4 D 4 E 4 F 4 G 4 H	
Belting Polyurethane, 1.35 mm, anti-static, 2 ply, FDA approved Polyurethane, 1.35 mm, anti-static, 2 ply, FDA approved, with B-section flange walls Polyurethane, 1.35 mm, anti-static, 2 ply, FDA approved, with 2 inch (50 mm) corrugated side walls Silicone, HT 177 °C (350 °F), anti-static 45 PIW, 2 ply, FDA approved Polyurethane, 2.9 mm, anti-static, 2 ply, FDA approved Polyurethane, 2.9 mm, anti-static, 2 ply, FDA approved, with B-section flange walls Polyurethane, 2.9 mm, anti-static, 2 ply, FDA approved, with 2 inch (50 mm) corrugated side walls		
Belt change access side (looking from inlet to discharge) Left hand Right hand		0 1

Weighfeeders**SITRANS WW200****Enclosed style****Selection and ordering data**

Order Code

Further designs

Please add **"-Z"** to article no. and specify order code(s).

Application Eng. reference number (max. 15 characters), specify in plain text. **Y31**

Shear gate arc radius: Enter shear gate arc radius in inches (xxx.xx inch)¹⁾ **Y74**

Enter design units (TPH, MTPH, lb/h, kg/h) **Y71**

Enter design speed (ft/m, m/s) **Y72**

Enter design capacity/rate **Y73**

AC gearmotor reduction ratio: Enter reduction ratio in plain text (X:1) **Y75**

AC gearmotor electrical style: enter IEC, UL-R/CSA or CCC style **Y76**

Center material bed depth **Y77**

Custom length: Select next longest option and specify infeed CL to discharge CL in plain text (indicated inches or millimeters) **Y01**

Manufacturer's test certificate: according to EN 10204-2.2 **C11**

Stainless steel tag [69 x 50 mm (2.71 x 1.97 inch)]: Measuring-point number/identification (max. 27 characters) specify in plain text **Y15**

Class I, Div. 1, Groups C and D; Class II, Div. 1, Groups F and G, approved electrical components; without junction boxes **E90**

ATEX II 2D approved electrical components; only available with speed encoder option 1 and 2; with Aluminum junction boxes **E91**

ATEX II 2D approved electrical components; only available with speed encoder option 4 and 5; with Stainless steel junction boxes **E92**

ATEX II 3D approved electrical components; only available with speed encoder option 1 and 2; with Aluminum junction boxes **E93**

Note: weighfeeder does not carry hazardous approval, only motor, loadcells, speed encoder, and tracking switches; approval not available with load cell options 0 ... 4 or motor options 4C ... 4H³⁾

Plastic shear curtain to control dust at the infeed for floodable materials and dusty applications¹⁾ **G11**

Pointek CLS100 Capacitance switch for plugged discharge chute detection **G12**

Belt cleaner, stainless steel, nylon brush, mounted under belt plow, cleaning dirty side of belt **G14**

Blue colored belt, anti-static, 2 ply, FDA approved⁴⁾ **G18**

Secondary speed encoder at motor (not for hazardous areas; not suitable for use with integrator) **G19**

Motor corrosion protection C5 acc. EN 12944 (available with standard AC motor) **G20**

Food grade Polyurethane sealing at infeed area **G22**

Custom design **Y99**
Specify quote reference when ordering

Operating instructions

All literature is available to download for free, in a range of languages, at

<http://www.siemens.com/weighing/documentation>

¹⁾ Available with material containment options D ... L only.

²⁾ 575 V versions meet 4:1 ct inverter rating, all other voltages meet 10:1.

³⁾ Available with Drive Configuration standard motor options only; all motors suitable for 400 V operation only.

⁴⁾ Available only with Belting options A, B, and C.

Selection and ordering data	Article No.	Article No.
SITRANS WW200 Weighfeeder, 304 stainless steel frame and enclosure Accuracy is $\pm 0.5\%$ or better, with capacity up to 120 m ³ /h (4 237 ft ³ /h). Click on the Article No. for the online configuration in the PIA Life Cycle Portal.	7MH7305- 	SITRANS WW200 Weighfeeder, 304 stainless steel frame and enclosure Accuracy is $\pm 0.5\%$ or better, with capacity up to 120 m ³ /h (4 237 ft ³ /h).
Add order code Y71 ... Y76 for all models to specify design data.		36 inch (914 mm) belt width
304 stainless steel frame with 304 stainless steel enclosure style with C/L infeed to C/L discharge <u>12 inch (305 mm) belt width</u> 52 inch (1 321 mm) 60 inch (1 524 mm) 68 inch (1 727 mm) 76 inch (1 930 mm) 84 inch (2 134 mm) 92 inch (2 337 mm) 100 inch (2 540 mm) 108 inch (2 743 mm) 116 inch (2 946 mm)	0 A 0 B 0 C 0 D 0 E 0 F 0 G 0 H 0 J	52 inch (1 321 mm) 60 inch (1 524 mm) 68 inch (1 727 mm) 76 inch (1 930 mm) 84 inch (2 134 mm) 92 inch (2 337 mm) 100 inch (2 540 mm) 108 inch (2 743 mm) 116 inch (2 946 mm)
<u>18 inch (457 mm) belt width</u> 52 inch (1 321 mm) 60 inch (1 524 mm) 68 inch (1 727 mm) 76 inch (1 930 mm) 84 inch (2 134 mm) 92 inch (2 337 mm) 100 inch (2 540 mm) 108 inch (2 743 mm) 116 inch (2 946 mm)	1 A 1 B 1 C 1 D 1 E 1 F 1 G 1 H 1 J	42 inch (1 067 mm) belt width 52 inch (1 321 mm) 60 inch (1 524 mm) 68 inch (1 727 mm) 76 inch (1 930 mm) 84 inch (2 134 mm) 92 inch (2 337 mm) 100 inch (2 540 mm) 108 inch (2 743 mm) 116 inch (2 946 mm)
<u>24 inch (610 mm) belt width</u> 52 inch (1 321 mm) 60 inch (1 524 mm) 68 inch (1 727 mm) 76 inch (1 930 mm) 84 inch (2 134 mm) 92 inch (2 337 mm) 100 inch (2 540 mm) 108 inch (2 743 mm) 116 inch (2 946 mm)	2 A 2 B 2 C 2 D 2 E 2 F 2 G 2 H 2 J	48 inch (1 219 mm) belt width 52 inch (1 321 mm) 60 inch (1 524 mm) 68 inch (1 727 mm) 76 inch (1 930 mm) 84 inch (2 134 mm) 92 inch (2 337 mm) 100 inch (2 540 mm) 108 inch (2 743 mm) 116 inch (2 946 mm)
<u>30 inch (762 mm) belt width</u> 52 inch (1 321 mm) 60 inch (1 524 mm) 68 inch (1 727 mm) 76 inch (1 930 mm) 84 inch (2 134 mm) 92 inch (2 337 mm) 100 inch (2 540 mm) 108 inch (2 743 mm) 116 inch (2 946 mm)	3 A 3 B 3 C 3 D 3 E 3 F 3 G 3 H 3 J	7MH7305- 4 A 4 B 4 C 4 D 4 E 4 F 4 G 4 H 4 J 5 A 5 B 5 C 5 D 5 E 5 F 5 G 5 H 5 J 6 A 6 B 6 C 6 D 6 E 6 F 6 G 6 H 6 J

Weighfeeders

SITRANS WW200

Enclosed style

Selection and ordering data

SITRANS WW200 Weighfeeder, 304 stainless steel frame and enclosure

Accuracy is $\pm 0.5\%$ or better, with capacity up to 120 m³/h (4 237 ft³/h).

Material containment construction

Add order code Y74 and plain text: "Arc radius in inches ... XX.XXX inch" for options D ... L

Shear gate inlet

Skirtboards 304 stainless steel

Skirtboards 304 stainless steel, with cover

Skirtboards 304 stainless steel, #4 polished

Skirtboards 304 stainless steel, #4 polished with cover

Skirtboards 316L stainless steel

Skirtboards 316L stainless steel, with cover

Skirtboards 316L stainless steel, #4 polished

Skirtboards 316L stainless steel, #4 polished with cover

Load cell

6 kg (13.2 lb) stainless steel, hermetically sealed

12 kg (26.5 lb) stainless steel, hermetically sealed

30 kg (66.1 lb) stainless steel, hermetically sealed

Speed sensor

Shaft mounted

1 000 PPR optical encoder

2 500 PPR optical encoder

1 000 PPR optical encoder, stainless steel

2 500 PPR optical encoder, stainless steel

Drive configuration

Add order code Y75 (reduction ratio) and Y76 (electrical style).

Standard AC motor

0.5 HP (0.37 kW)

220 ... 240/380 ... 480 V 3 ph 50/60 Hz

0.5 HP (0.37 kW) 575 V 3 ph 60 Hz

1 HP (0.75 kW)

220 ... 240/380 ... 480 V 3 ph 50/60 Hz

1 HP (0.75 kW) 575 V 3 ph 60 Hz

Food grade AC motor

0.25 HP (0.18 kW) 220 ... 240/380 ... 480 V 3 ph 50/60 Hz

0.25 HP (0.18 kW) 575 V 3 ph 60 Hz

0.5 HP (0.37 kW) 220 ... 240/380 ... 480 V 3 ph 50/60 Hz

0.5 HP (0.37 kW) 575 V 3 ph 60 Hz

0.75 HP (0.55 kW) 220 ... 240/380 ... 480 V 3 ph 50/60 Hz

0.75 HP (0.55 kW) 575 V 3 ph 60 Hz

1 HP (0.75 kW) 220 ... 240/380 ... 480 V 3 ph 50/60 Hz

1 HP (0.75 kW) 575 V 3 ph 60 Hz

Article No.

7MH7305-



D

E

F

G

H

J

K

L

5

6

7

1

2

4

5

0 C

0 D

0 G

0 H

4 A

4 B

4 C

4 D

4 E

4 F

4 G

4 H

Article No.

7MH7305-



A

B

C

D

K

L

M

SITRANS WW200 Weighfeeder, 304 stainless steel frame and enclosure

Accuracy is $\pm 0.5\%$ or better, with capacity up to 120 m³/h (4 237 ft³/h).

Beltting

Polyurethane, 1.35 mm, anti-static, 2 ply, FDA approved

Polyurethane, 1.35 mm, anti-static, 2 ply, FDA approved, with B-section flange walls

Polyurethane, 1.35 mm, anti-static, 2 ply, FDA approved, with 2 inch (50 mm) corrugated side walls

Silicone, HT 177 °C (350 °F), anti-static 45 PIW, 2 ply, FDA approved

Polyurethane, 2.9 mm, anti-static, 2 ply, FDA approved

Polyurethane, 2.9 mm, anti-static, 2 ply, FDA approved, with B-section flange walls

Polyurethane, 2.9 mm, anti-static, 2 ply, FDA approved, with 2 inch (50 mm) corrugated side walls

Belt change access side (looking from inlet to discharge)

Left hand

Right hand

0

1

Selection and ordering data

Order Code

Further designs

Please add **"-Z"** to article no. and specify order code(s).

Application Eng. reference number (max. 15 characters), specify in plain text.	Y31
Shear gate arc radius: Enter shear gate arc radius in inches (xxx.xx inch) ¹⁾	Y74
Enter design units (TPH, MTPH, lb/h, kg/h)	Y71
Enter design speed (ft/m, m/s)	Y72
Enter design capacity/rate	Y73
AC gearmotor reduction ratio: Enter reduction ratio in plain text (X:1)	Y75
AC gearmotor electrical style: enter IEC, UL-R/CSA or CCC style	Y76
Center material bed depth	Y77
Custom length: Select next longest option and specify infeed CL to discharge CL in plain text (indicated inches or millimeters)	Y01
Manufacturer's test certificate: according to EN 10204-2.2	C11
Stainless steel tag [69 x 50 mm (2.71 x 1.97 inch)]: Measuring-point number/identification (max. 27 characters) specify in plain text	Y15
Class I, Div. 1, Groups C and D; Class II, Div. 1, Groups F and G, approved electrical components; without junction boxes	E90
ATEX II 2D approved electrical components; only available with speed encoder option 1 and 2; with Aluminum junction boxes	E91
ATEX II 2D approved electrical components; only available with speed encoder option 4 and 5; with Stainless steel junction boxes	E92
ATEX II 3D approved electrical components; only available with speed encoder option 1 and 2; with Aluminum junction boxes	E93
Note: weighfeeder does not carry hazardous approval, only motor, loadcells, speed encoder, and tracking switches; approval not available with load cell options 0 ... 4 or motor options 4C ... 4H ³⁾	
Plastic shear curtain to control dust at the infeed for floodable materials and dusty applications ¹⁾	G11
Pointek CLS100 Capacitance switch for plugged discharge chute detection	G12
Siemens start/stop, auto/manual, speed control, hand held operator	G13
Belt cleaner, stainless steel, nylon brush, mounted under belt plow, cleaning dirty side of belt	G14
Blue colored belt, anti-static, 2 ply, FDA approved ⁴⁾	G18
Secondary speed encoder at motor (not for hazardous areas; not suitable for use with integrator)	G19
Motor corrosion protection C5 acc. EN 12944 (available with standard AC motor)	G20
Food grade Polyurethane sealing at infeed area	G22
Custom design	Y99

Specify quote reference when ordering

Operating instructions

All literature is available to download for free, in a range of languages, at

<http://www.siemens.com/weighing/documentation>

¹⁾ Available with material containment options D ... L only.

²⁾ 575 V versions meet 4:1 ct inverter rating, all other voltages meet 10:1.

³⁾ Available with Drive Configuration standard motor options only; all motors suitable for 400 V operation only.

⁴⁾ Available only with Belting options A, B, and C.

Weighfeeders**SITRANS WW200****Enclosed style****Selection and ordering data**

SITRANS WW200 Weighfeeder, 316L stainless steel frame with painted mild steel enclosure
Accuracy is $\pm 0.5\%$ or better, with capacity up to 120 m³/h (4 237 ft³/h).

➤ Click on the Article No. for the online configuration in the PIA Life Cycle Portal.

Add order code Y71 ... Y76 for all models to specify design data.

316L stainless steel frame with painted mild steel enclosure style with C/L infeed to C/L discharge

12 inch (305 mm) belt width

52 inch (1 321 mm)

60 inch (1 524 mm)

68 inch (1 727 mm)

76 inch (1 930 mm)

84 inch (2 134 mm)

92 inch (2 337 mm)

100 inch (2 540 mm)

108 inch (2 743 mm)

116 inch (2 946 mm)

18 inch (457 mm) belt width

52 inch (1 321 mm)

60 inch (1 524 mm)

68 inch (1 727 mm)

76 inch (1 930 mm)

84 inch (2 134 mm)

92 inch (2 337 mm)

100 inch (2 540 mm)

108 inch (2 743 mm)

116 inch (2 946 mm)

24 inch (610 mm) belt width

52 inch (1 321 mm)

60 inch (1 524 mm)

68 inch (1 727 mm)

76 inch (1 930 mm)

84 inch (2 134 mm)

92 inch (2 337 mm)

100 inch (2 540 mm)

108 inch (2 743 mm)

116 inch (2 946 mm)

30 inch (762 mm) belt width

52 inch (1 321 mm)

60 inch (1 524 mm)

68 inch (1 727 mm)

76 inch (1 930 mm)

84 inch (2 134 mm)

92 inch (2 337 mm)

100 inch (2 540 mm)

108 inch (2 743 mm)

116 inch (2 946 mm)

Article No.

7MH7306-**0 A****0 B****0 C****0 D****0 E****0 F****0 G****0 H****0 J****1 A****1 B****1 C****1 D****1 E****1 F****1 G****1 H****1 J****2 A****2 B****2 C****2 D****2 E****2 F****2 G****2 H****2 J****3 A****3 B****3 C****3 D****3 E****3 F****3 G****3 H****3 J**

SITRANS WW200 Weighfeeder, 316L stainless steel frame with painted mild steel enclosure
Accuracy is $\pm 0.5\%$ or better, with capacity up to 120 m³/h (4 237 ft³/h).

36 inch (914 mm) belt width

52 inch (1 321 mm)

60 inch (1 524 mm)

68 inch (1 727 mm)

76 inch (1 930 mm)

84 inch (2 134 mm)

92 inch (2 337 mm)

100 inch (2 540 mm)

108 inch (2 743 mm)

116 inch (2 946 mm)

42 inch (1 067 mm) belt width

52 inch (1 321 mm)

60 inch (1 524 mm)

68 inch (1 727 mm)

76 inch (1 930 mm)

84 inch (2 134 mm)

92 inch (2 337 mm)

100 inch (2 540 mm)

108 inch (2 743 mm)

116 inch (2 946 mm)

48 inch (1 219 mm) belt width

52 inch (1 321 mm)

60 inch (1 524 mm)

68 inch (1 727 mm)

76 inch (1 930 mm)

84 inch (2 134 mm)

92 inch (2 337 mm)

100 inch (2 540 mm)

108 inch (2 743 mm)

116 inch (2 946 mm)

Article No.

7MH7306-**4 A****4 B****4 C****4 D****4 E****4 F****4 G****4 H****4 J****5 A****5 B****5 C****5 D****5 E****5 F****5 G****5 H****5 J****6 A****6 B****6 C****6 D****6 E****6 F****6 G****6 H****6 J**

Selection and ordering data	Article No.	Article No.
SITRANS WW200 Weighfeeder, 316L stainless steel frame with painted mild steel enclosure Accuracy is $\pm 0.5\%$ or better, with capacity up to 120 m ³ /h (4 237 ft ³ /h).	7MH7306-	7MH7306-
Add order code Y74 and plain text: "Arc radius in inches ... XX.XXX" for options H ... L <u>Shear gate inlet</u> Skirtboards 316L stainless steel Skirtboards 316L stainless steel, with cover Skirtboards 316L stainless steel, #4 polished Skirtboards 316L stainless steel, #4 polished with cover	H J K L	
Load cell 6 kg (13.2 lb) stainless steel, hermetically sealed 12 kg (26.5 lb) stainless steel, hermetically sealed 30 kg (66.1 lb) stainless steel, hermetically sealed	5 6 7	
Speed sensor <u>Shaft mounted</u> 1 000 PPR optical encoder 2 500 PPR optical encoder 1 000 PPR optical encoder, stainless steel 2 500 PPR optical encoder, stainless steel	1 2 4 5	
Drive configuration Add order code Y75 (reduction ratio) and Y76 (electrical style). <u>Standard AC motor</u> 0.5 HP (0.37 kW) 220 ... 240/380 ... 480 V 3 ph 50/60 Hz 0.5 HP (0.37 kW) 575 V 3 ph 60 Hz 1 HP (0.75 kW) 220 ... 240/380 ... 480 V 3 ph 50/60 Hz 1 HP (0.75 kW) 575 V 3 ph 60 Hz	0 C 0 D 0 G 0 H	
<u>Food grade AC motor</u> 0.25 HP (0.18 kW) 220 ... 240/380 ... 480 V 3 ph 50/60 Hz 0.25 HP (0.18 kW) 575 V 3 ph 60 Hz 0.5 HP (0.37 kW) 220 ... 240/380 ... 480 V 3 ph 50/60 Hz 0.5 HP (0.37 kW) 575 V 3 ph 60 Hz 0.75 HP (0.55 kW) 220 ... 240/380 ... 480 V 3 ph 50/60 Hz 0.75 HP (0.55 kW) 575 V 3 ph 60 Hz 1 HP (0.75 kW) 220 ... 240/380 ... 480 V 3 ph 50/60 Hz 1 HP (0.75 kW) 575 V 3 ph 60 Hz	4 A 4 B 4 C 4 D 4 E 4 F 4 G 4 H	
SITRANS WW200 Weighfeeder, 316L stainless steel frame with painted mild steel enclosure Accuracy is $\pm 0.5\%$ or better, with capacity up to 120 m ³ /h (4 237 ft ³ /h).		
Belting Polyurethane, 1.35 mm, anti-static, 2 ply, FDA approved Polyurethane, 1.35 mm, anti-static, 2 ply, FDA approved, with B-section flange walls Polyurethane, 1.35 mm, anti-static, 2 ply, FDA approved, with 2 inch (50 mm) corrugated side walls Silicone, HT 177 °C (350 °F), anti-static 45 PIW, 2 ply, FDA approved Polyurethane, 2.9 mm, anti-static, 2 ply, FDA approved Polyurethane, 2.9 mm, anti-static, 2 ply, FDA approved, with B-section flange walls Polyurethane, 2.9 mm, anti-static, 2 ply, FDA approved, with 2 inch (50 mm) corrugated side walls		A B C D K L M
Belt change access side (looking from inlet to discharge) Left hand Right hand		0 1

Weighfeeders**SITRANS WW200****Enclosed style****Selection and ordering data**

Order Code

Further designs

Please add **"-Z"** to article no. and specify order code(s).

Application Eng. reference number (max. 15 characters), specify in plain text.

Y31

Shear gate arc radius: Enter shear gate arc radius in inches (xxx.xx inch)¹⁾

Y74

Enter design units (TPH, MTPH, lb/h, kg/h)

Y71

Enter design speed (ft/m, m/s)

Y72

Enter design capacity/rate

Y73

AC gearmotor reduction ratio: Enter reduction ratio in plain text (X:1)

Y75

AC gearmotor electrical style: enter IEC, UL-R/CSA or CCC style

Y76

Center material bed depth

Y77

Custom length: Select next longest option and specify infeed CL to discharge CL in plain text (indicated inches or millimeters)

Y01

Manufacturer's test certificate: According to EN 10204-2.2

C11

Stainless steel tag [69 x 50 mm (2.71 x 1.97 inch)]: Measuring-point number/identification (max. 27 characters) specify in plain text

Y15

Class I, Div. 1, Groups C and D; Class II, Div. 1, Groups F and G, approved electrical components; without junction boxes

E90

ATEX II 2D approved electrical components; only available with speed encoder option 1 and 2; with Aluminum junction boxes

E91

ATEX II 2D approved electrical components; only available with speed encoder option 4 and 5; with Stainless steel junction boxes

E92

ATEX II 3D approved electrical components; only available with speed encoder option 1 and 2; with Aluminum junction boxes

E93

Note: weighfeeder does not carry hazardous approval, only motor, loadcells, speed encoder, and tracking switches; approval not available with load cell options 0 ... 4 or motor options 4C ... 4H³⁾

Plastic shear curtain to control dust at the infeed for floodable materials and dusty applications¹⁾

G11

Pointek CLS100 Capacitance switch for plugged discharge chute detection

G12

Belt cleaner, stainless steel, nylon brush, mounted under belt plow, cleaning dirty side of belt

G14

Blue colored belt, anti-static, 2 ply, FDA approved⁴⁾

G18

Secondary speed encoder at motor (not for hazardous areas; not suitable for use with integrator)

G19

Motor corrosion protection C5 acc. EN 12944 (available with standard AC motor)

G20

Food grade Polyurethane sealing at infeed area

G22

Custom design

Y99

Specify quote reference when ordering

Operating instructions

All literature is available to download for free, in a range of languages, at

<http://www.siemens.com/weighing/documentation>

¹⁾ Available with material containment options H ... L only.

²⁾ 575 V versions meet 4:1 ct inverter rating, all other voltages meet 10:1.

³⁾ Available with Drive Configuration standard motor options only, all motors suitable for 400 V operation only.

⁴⁾ Available only with Belting options A, B, and C.

Selection and ordering data	Article No.	Article No.
SITRANS WW200 Weighfeeder, 316L stainless steel frame with 304 stainless steel enclosure Accuracy is $\pm 0.5\%$ or better, with capacity up to 120 m ³ /h (4 237 ft ³ /h). Click on the Article No. for the online configuration in the PIA Life Cycle Portal.	7MH7307- 	SITRANS WW200 Weighfeeder, 316L stainless steel frame with 304 stainless steel enclosure Accuracy is $\pm 0.5\%$ or better, with capacity up to 120 m ³ /h (4 237 ft ³ /h). 7MH7307-
Add order code Y71 ... Y76 for all models to specify design data.		
316L stainless steel frame with 304 stainless steel enclosure style with C/L infeed to C/L discharge		
<u>12 inch (305 mm) belt width</u> 52 inch (1 321 mm) 60 inch (1 524 mm) 68 inch (1 727 mm) 76 inch (1 930 mm) 84 inch (2 134 mm) 92 inch (2 337 mm) 100 inch (2 540 mm) 108 inch (2 743 mm) 116 inch (2 946 mm)	0 A 0 B 0 C 0 D 0 E 0 F 0 G 0 H 0 J	<u>36 inch (914 mm) belt width</u> 52 inch (1 321 mm) 60 inch (1 524 mm) 68 inch (1 727 mm) 76 inch (1 930 mm) 84 inch (2 134 mm) 92 inch (2 337 mm) 100 inch (2 540 mm) 108 inch (2 743 mm) 116 inch (2 946 mm) <u>42 inch (1 067 mm) belt width</u> 52 inch (1 321 mm) 60 inch (1 524 mm) 68 inch (1 727 mm) 76 inch (1 930 mm) 84 inch (2 134 mm) 92 inch (2 337 mm) 100 inch (2 540 mm) 108 inch (2 743 mm) 116 inch (2 946 mm)
<u>18 inch (457 mm) belt width</u> 52 inch (1 321 mm) 60 inch (1 524 mm) 68 inch (1 727 mm) 76 inch (1 930 mm) 84 inch (2 134 mm) 92 inch (2 337 mm) 100 inch (2 540 mm) 108 inch (2 743 mm) 116 inch (2 946 mm)	1 A 1 B 1 C 1 D 1 E 1 F 1 G 1 H 1 J	4 A 4 B 4 C 4 D 4 E 4 F 4 G 4 H 4 J 5 A 5 B 5 C 5 D 5 E 5 F 5 G 5 H 5 J
<u>24 inch (610 mm) belt width</u> 52 inch (1 321 mm) 60 inch (1 524 mm) 68 inch (1 727 mm) 76 inch (1 930 mm) 84 inch (2 134 mm) 92 inch (2 337 mm) 100 inch (2 540 mm) 108 inch (2 743 mm) 116 inch (2 946 mm)	2 A 2 B 2 C 2 D 2 E 2 F 2 G 2 H 2 J	6 A 6 B 6 C 6 D 6 E 6 F 6 G 6 H 6 J
<u>30 inch (762 mm) belt width</u> 52 inch (1 321 mm) 60 inch (1 524 mm) 68 inch (1 727 mm) 76 inch (1 930 mm) 84 inch (2 134 mm) 92 inch (2 337 mm) 100 inch (2 540 mm) 108 inch (2 743 mm) 116 inch (2 946 mm)	3 A 3 B 3 C 3 D 3 E 3 F 3 G 3 H 3 J	

Weighfeeders

SITRANS WW200

Enclosed style

Selection and ordering data

SITRANS WW200 Weighfeeder, 316L stainless steel frame with 304 stainless steel enclosure
Accuracy is $\pm 0.5\%$ or better, with capacity up to 120 m³/h (4 237 ft³/h).

Material containment construction

Add order code Y74 and plain text: "Arc radius in inches ... XX.XXX inch" for options H ... L

Shear gate inlet and skirtboards 316L stainless steel

Shear gate inlet and skirtboards 316L stainless steel, with cover

Shear gate inlet and skirtboards 316L stainless steel, #4 polished

Shear gate inlet and skirtboards 316L stainless steel, #4 polished with cover

Load cell

6 kg (13.2 lb) stainless steel, hermetically sealed

12 kg (26.5 lb) stainless steel, hermetically sealed

30 kg (66.1 lb) stainless steel, hermetically sealed

Speed sensor

1 000 PPR shaft mounted optical encoder

2 500 PPR shaft mounted optical encoder

1 000 PPR shaft mounted optical encoder, stainless steel

2 500 PPR shaft mounted optical encoder, stainless steel

Drive configuration

Add order code Y75 (reduction ratio) and Y76 (electrical style).

Standard AC motor

0.5 HP (0.37 kW)
220 ... 240/380 ... 480 V 3 ph 50/60 Hz

0.5 HP (0.37 kW) 575 V 3 ph 60 Hz

1 HP (0.75 kW)
220 ... 240/380 ... 480 V 3 ph 50/60 Hz

1 HP (0.75 kW) 575 V 3 ph 60 Hz

Food grade AC motor

0.25 HP (0.18 kW) 220 ... 240/380 ... 480 V 3 ph 50/60 Hz

0.25 HP (0.18 kW) 575 V 3 ph 60 Hz

0.5 HP (0.37 kW) 220 ... 240/380 ... 480 V 3 ph 50/60 Hz

0.5 HP (0.37 kW) 575 V 3 ph 60 Hz

0.75 HP (0.55 kW) 220 ... 240/380 ... 480 V 3 ph 50/60 Hz

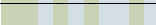
0.75 HP (0.55 kW) 575 V 3 ph 60 Hz

1 HP (0.75 kW) 220 ... 240/380 ... 480 V 3 ph 50/60 Hz

1 HP (0.75 kW) 575 V 3 ph 60 Hz

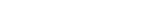
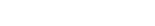
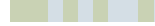
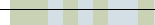
Article No.

7MH7307-



Article No.

7MH7307-



Selection and ordering data	Order code
Further designs	
Please add "-Z" to article no. and specify order code(s).	
Application Eng. reference number (max. 15 characters), specify in plain text.	Y31
Shear gate arc radius: Enter shear gate arc radius in inches (xxx.xx inch) ¹⁾	Y74
Enter design units (TPH, MTPH, lb/h, kg/h)	Y71
Enter design speed (ft/m, m/s)	Y72
Enter design capacity/rate	Y73
AC gearmotor reduction ratio: Enter reduction ratio in plain text (X:1)	Y75
AC gearmotor electrical style: enter IEC, UL-R/CSA or CCC style	Y76
Center material bed depth	Y77
Custom length: Select next longest option and specify infeed CL to discharge CL in plain text (indicated inches or millimeters)	Y01
Manufacturer's test certificate: according to EN 10204-2.2	C11
Stainless steel tag [69 x 50 mm (2.71 x 1.97 inch)]: Measuring-point number/identification (max. 27 characters) specify in plain text	Y15
Class I, Div. 1, Groups C and D; Class II, Div. 1, Groups F and G, approved electrical components; without junction boxes	E90
ATEX II 2D approved electrical components; only available with speed encoder option 1 and 2; with Aluminum junction boxes	E91
ATEX II 2D approved electrical components; only available with speed encoder option 4 and 5; with Stainless steel junction boxes	E92
ATEX II 3D approved electrical components; only available with speed encoder option 1 and 2; with Aluminum junction boxes	E93
Note: weighfeeder does not carry hazardous approval, only motor, loadcells, speed encoder, and tracking switches; approval not available with load cell options 0 ... 4 or motor options 4C ... 4H ³⁾	
Plastic shear curtain to control dust at the infeed for floodable materials and dusty applications ¹⁾	G11
Pointek CLS100 Capacitance switch for plugged discharge chute detection	G12
Belt cleaner, stainless steel, nylon brush, mounted under belt plow, cleaning dirty side of belt	G14
Blue colored belt, anti-static, 2 ply, FDA approved ⁴⁾	G18
Secondary speed encoder at motor (not for hazardous areas; not suitable for use with integrator)	G19
Motor corrosion protection C5 acc. EN 12944 (available with standard AC motor)	G20
Food grade Polyurethane sealing at infeed area	G22
Custom design	Y99
Specify quote reference when ordering	
Operating instructions	
All literature is available to download for free, in a range of languages, at http://www.siemens.com/weighing/documentation	

¹⁾ Available with material containment options H ... L only.

²⁾ 575 V versions meet 4:1 ct inverter rating, all other voltages meet 10:1.

³⁾ Available with Drive Configuration standard motor options only, all motors suitable for 400 V operation only.

⁴⁾ Available only with Belting options A, B, and C.

Weighfeeders**SITRANS WW200****Enclosed style****Selection and ordering data**

Article No.

Article No.

SITRANS WW200 Weighfeeder, 316L stainless steel frame and enclosureAccuracy is $\pm 0.5\%$ or better, with capacity up to 120 m³/h (4 237 ft³/h).

➤ Click on the Article No. for the online configuration in the PIA Life Cycle Portal.

Add order code Y71 ... Y76 for all models to specify design data.

316L stainless steel frame with 316L stainless steel enclosure style with C/L infeed to C/L discharge12 inch (305 mm) belt width

52 inch (1 321 mm)
60 inch (1 524 mm)
68 inch (1 727 mm)
76 inch (1 930 mm)
84 inch (2 134 mm)
92 inch (2 337 mm)
100 inch (2 540 mm)
108 inch (2 743 mm)
116 inch (2 946 mm)

7MH7308-
0 A
0 B
0 C
0 D
0 E
0 F
0 G
0 H
0 J

18 inch (457 mm) belt width

52 inch (1 321 mm)
60 inch (1 524 mm)
68 inch (1 727 mm)
76 inch (1 930 mm)
84 inch (2 134 mm)
92 inch (2 337 mm)
100 inch (2 540 mm)
108 inch (2 743 mm)
116 inch (2 946 mm)

1 A
1 B
1 C
1 D
1 E
1 F
1 G
1 H
1 J

24 inch (610 mm) belt width

52 inch (1 321 mm)
60 inch (1 524 mm)
68 inch (1 727 mm)
76 inch (1 930 mm)
84 inch (2 134 mm)
92 inch (2 337 mm)
100 inch (2 540 mm)
108 inch (2 743 mm)
116 inch (2 946 mm)

2 A
2 B
2 C
2 D
2 E
2 F
2 G
2 H
2 J

30 inch (762 mm) belt width

52 inch (1 321 mm)
60 inch (1 524 mm)
68 inch (1 727 mm)
76 inch (1 930 mm)
84 inch (2 134 mm)
92 inch (2 337 mm)
100 inch (2 540 mm)
108 inch (2 743 mm)
116 inch (2 946 mm)

3 A
3 B
3 C
3 D
3 E
3 F
3 G
3 H
3 J

SITRANS WW200 Weighfeeder, 316L stainless steel frame and enclosureAccuracy is $\pm 0.5\%$ or better, with capacity up to 120 m³/h (4 237 ft³/h).36 inch (914 mm) belt width

52 inch (1 321 mm)
60 inch (1 524 mm)
68 inch (1 727 mm)
76 inch (1 930 mm)
84 inch (2 134 mm)
92 inch (2 337 mm)
100 inch (2 540 mm)
108 inch (2 743 mm)
116 inch (2 946 mm)

7MH7308-
4 A
4 B
4 C
4 D
4 E
4 F
4 G
4 H
4 J

42 inch (1 067 mm) belt width

52 inch (1 321 mm)
60 inch (1 524 mm)
68 inch (1 727 mm)
76 inch (1 930 mm)
84 inch (2 134 mm)
92 inch (2 337 mm)
100 inch (2 540 mm)
108 inch (2 743 mm)
116 inch (2 946 mm)

5 A
5 B
5 C
5 D
5 E
5 F
5 G
5 H
5 J

48 inch (1 219 mm) belt width

52 inch (1 321 mm)
60 inch (1 524 mm)
68 inch (1 727 mm)
76 inch (1 930 mm)
84 inch (2 134 mm)
92 inch (2 337 mm)
100 inch (2 540 mm)
108 inch (2 743 mm)
116 inch (2 946 mm)

6 A
6 B
6 C
6 D
6 E
6 F
6 G
6 H
6 J

Selection and ordering data	Article No.	Article No.
SITRANS WW200 Weighfeeder, 316L stainless steel frame and enclosure Accuracy is $\pm 0.5\%$ or better, with capacity up to 120 m ³ /h (4 237 ft ³ /h).	7MH7308-	7MH7308-
Material containment construction Add order code Y74 and plain text: "Arc radius in inches ... XX.XXX inch" for options H ... L <u>Shear gate inlet</u> Skirtboards 316L stainless steel Skirtboards 316L stainless steel, with cover Skirtboards 316L stainless steel, #4 polished Skirtboards 316L stainless steel, #4 polished with cover	H J K L	
Load cell 6 kg (13.2 lb) stainless steel, hermetically sealed 12 kg (26.5 lb) stainless steel, hermetically sealed 30 kg (66.1 lb) stainless steel, hermetically sealed	5 6 7	
Speed sensor <u>Shaft mounted</u> 1 000 PPR optical encoder 2 500 PPR optical encoder 1 000 PPR optical encoder, stainless steel 2 500 PPR optical encoder, stainless steel	1 2 4 5	
Drive configuration Add order code Y75 (reduction ratio) and Y76 (electrical style). <u>Standard AC motor</u> 0.5 HP (0.37 kW) 220 ... 240/380 ... 480 V 3 ph 50/60 Hz 0.5 HP (0.37 kW) 575 V 3 ph 60 Hz 1 HP (0.75 kW) 220 ... 240/380 ... 480 V 3 ph 50/60 Hz 1 HP (0.75 kW) 575 V 3 ph 60 Hz	0 C 0 D 0 G 0 H	
<u>Food grade AC motor</u> 0.25 HP (0.18 kW) 220 ... 240/380 ... 480 V 3 ph 50/60 Hz 0.25 HP (0.18 kW) 575 V 3 ph 60 Hz 0.5 HP (0.37 kW) 220 ... 240/380 ... 480 V 3 ph 50/60 Hz 0.5 HP (0.37 kW) 575 V 3 ph 60 Hz 0.75 HP (0.55 kW) 220 ... 240/380 ... 480 V 3 ph 50/60 Hz 0.75 HP (0.55 kW) 575 V 3 ph 60 Hz 1 HP (0.75 kW) 220 ... 240/380 ... 480 V 3 ph 50/60 Hz 1 HP (0.75 kW) 575 V 3 ph 60 Hz	4 A 4 B 4 C 4 D 4 E 4 F 4 G 4 H	
SITRANS WW200 Weighfeeder, 316L stainless steel frame and enclosure Accuracy is $\pm 0.5\%$ or better, with capacity up to 120 m ³ /h (4 237 ft ³ /h).		
Belting Polyurethane, 1.35 mm, anti-static, 2 ply, FDA approved Polyurethane, 1.35 mm, anti-static, 2 ply, FDA approved, with B-section flange walls Polyurethane, 1.35 mm, anti-static, 2 ply, FDA approved, with 2 inch (50 mm) corrugated side walls Silicone, HT 177 °C (350 °F), anti-static 45 PIW, 2 ply, FDA approved Polyurethane, 2.9 mm, anti-static, 2 ply, FDA approved Polyurethane, 2.9 mm, anti-static, 2 ply, FDA approved, with B-section flange walls Polyurethane, 2.9 mm, anti-static, 2 ply, FDA approved, with 2 inch (50 mm) corrugated side walls		A B C D K L M
Belt change access side (looking from inlet to discharge) Left hand Right hand		0 1

Weighfeeders**SITRANS WW200****Enclosed style****Selection and ordering data**

Order code

Further designs

Please add **"-Z"** to article no. and specify order code(s).

Application Eng. reference number (max. 15 characters), specify in plain text. **Y31**

Shear gate arc radius: Enter shear gate arc radius in inches (xxx.xx inch)¹⁾ **Y74**

Enter design units (TPH, MTPH, lb/h, kg/h) **Y71**

Enter design speed (ft/m, m/s) **Y72**

Enter design capacity/rate **Y73**

AC gearmotor reduction ratio: Enter reduction ratio in plain text (X:1) **Y75**

AC gearmotor electrical style: enter IEC, UL-R/CSA or CCC style **Y76**

Center material bed depth **Y77**

Custom length: Select next longest option and specify infeed CL to discharge CL in plain text (indicated inches or millimeters) **Y01**

Manufacturer's test certificate: according to EN 10204-2.2 **C11**

Stainless steel tag [69 x 50 mm (2.71 x 1.97 inch)]: Measuring-point number/identification (max. 27 characters) specify in plain text **Y15**

Class I, Div. 1, Groups C and D; Class II, Div. 1, Groups F and G, approved electrical components; without junction boxes **E90**

ATEX II 2D approved electrical components; only available with speed encoder option 1 and 2; with Aluminum junction boxes **E91**

ATEX II 2D approved electrical components; only available with speed encoder option 4 and 5; with Stainless steel junction boxes **E92**

ATEX II 3D approved electrical components; only available with speed encoder option 1 and 2; with Aluminum junction boxes **E93**

Note: weighfeeder does not carry hazardous approval, only motor, loadcells, speed encoder, and tracking switches; approval not available with load cell options 0 ... 4 or motor options 4C ... 4H³⁾

Plastic shear curtain to control dust at the infeed for floodable materials and dusty applications¹⁾ **G11**

Pointek CLS100 Capacitance switch for plugged discharge chute detection **G12**

Belt cleaner, stainless steel, nylon brush, mounted under belt plow, cleaning dirty side of belt **G14**

Blue colored belt, anti-static, 2 ply, FDA approved⁴⁾ **G18**

Secondary speed encoder at motor (not for hazardous areas; not suitable for use with integrator) **G19**

Motor corrosion protection C5 acc. EN 12944 (available with standard AC motor) **G20**

Food grade Polyurethane sealing at infeed area **G22**

Custom design **Y99**

Specify quote reference when ordering

Operating instructions

All literature is available to download for free, in a range of languages, at

<http://www.siemens.com/weighing/documentation>

¹⁾ Available with material containment options H ... L only.

²⁾ 575 V versions meet 4:1 ct inverter rating, all other voltages meet 10:1.

³⁾ Available with Drive Configuration standard motor options only, all motors suitable for 400 V operation only.

⁴⁾ Available only with Belting options A, B, and C.

Selection and ordering data	Article No.	Article No.
Accessories		
Test chain 1.62 lb/ft, 2.41 kg/m - 60 inches long	7MH7723-1NF	Enclosure latches stainless steel (includes 5 latches)
Test chain 1.52 lb/ft, 2.54 kg/m - 1000 mm long	7MH7723-1SK	Polyurethane sealing, white
Start, Stop, Hand/Off/Auto, speed pot local operator station	7MH7723-1JA	Polyurethane sealing, blue
CLS100 plugged discharge chute retrofit kit (includes CLS100, material hood)	7MH7723-1JE	Guide rollers
Calibration hanger weights		
200 g (0.4 lb)	7MH7724-1AF	Spare Brush, 12 inch belt width
500 g (1.1 lb)	7MH7724-1AG	Spare Brush, 18 inch belt width
1 000 g (2.2 lb)	7MH7724-1AH	Spare Brush, 24 inch belt width
2 000 g (4.4 lb)	7MH7724-1AJ	Spare Brush, 30 inch belt width
3 500 g (7.7 lb)	7MH7724-1BQ	Spare Brush, 36 inch belt width
5 000 g (11 lb)	7MH7724-1AK	Spare Brush, 42 inch belt width
7 500 g (16.5 lb)	7MH7724-1BR	Spare Brush, 48 inch belt width
8 500 g (18.7 lb)	7MH7724-1BS	Weighdeck Slider bar, PE-HD, 1 piece
10 000 (22 lb)	7MH7724-1BT	Telescopers, set of 2, mild steel
12 000 g (26.5 lb)	7MH7724-1BU	Telescopers, set of 2, stainless steel
15 000 g (33.1 lb)	7MH7724-1BV	Spare scraper blade, 12 inch belt width
Note: calibration accessories should be ordered as a separate item on the order.		Spare scraper blade, 18 inch belt width
Spare parts		
6 kg (13.2 lb) stainless steel load cell	7MH5117-1QD00	Spare scraper blade, 24 inch belt width
12 kg (26.4 lb) stainless steel load cell	7MH5117-2BD00	Spare scraper blade, 30 inch belt width
30 kg (66.2 lb) stainless steel load cell	7MH5117-2KD00	Spare scraper blade, 36 inch belt width
10 kg (22 lb) nickel plated steel load cell	7MH7725-1EK	Spare scraper blade, 42 inch belt width
15 kg (33.1 lb) nickel plated steel load cell	7MH7725-1EL	Spare scraper blade, 42 inch belt width
20 kg (44 lb) nickel plated steel load cell	7MH7725-1EM	Hazardous rated electrical spare parts
30 kg (66.2 lb) nickel plated steel load cell	7MH7725-1EN	Optical encoders
50 kg (110.2 lb) nickel plated steel load cell	7MH7725-1EP	500 PPR optical encoder, Class I, Div. 1, Groups C and D, Class II, Div. 1, Groups F and G
500 PPR optical encoder	6FX20012PA50	1 000 PPR optical encoder, Class I, Div. 1, Groups C and D, Class II, Div. 1, Groups F and G
1 000 PPR optical encoder	6FX20012PB00	2 500 PPR optical encoder, Class I, Div. 1, Groups C and D, Class II, Div. 1, Groups F and G
2 500 PPR optical encoder	6FX20012PC50	1 000 PPR optical encoder, ATEX II 2D
Optical encoder connector	6FX20030SU12	2 000 PPR optical encoder, ATEX II 2D
Speed encoder plug-in with cable	7MH7723-1KM	
Encoder, Stainless steel, 500 PPR	7MH7723-1HG	
Speed Encoder, 1 000 ppr, stainless steel	7MH7723-1HH	
Speed Encoder, 2 500 ppr, stainless steel	7MH7723-1HJ	
Magnetic proximity switch	7MH7723-1GA	
Motor mounted sensor flange 56C	7MH7723-1RB	
Termination board for Junction Box	A5E03623963	
Belt tracking switch	3SE5112-0CR01	
Belt tracking switch, ATEX II 2D/Class I, Div. 1, Groups C and D, Class II, Div. 1, Groups F and G	7MH7723-1RA	
WW200 outline approval drawing	7MH7726-1BU	
Head bearing replacement kit mild steel (includes 2 bearings) ¹⁾	7MH7723-1QM	
Tail bearing replacement kit mild steel (includes 2 bearings) ¹⁾	7MH7723-1QN	
Head bearing replacement kit stainless steel (includes 2 bearings)	7MH7723-1QP	
Tail bearing replacement kit stainless steel (includes 2 bearings)	7MH7723-1QQ	
Skirtboard seal replacement kit, 7 meters	7MH7723-1QR	

¹⁾ Suitable for weighfeeders made in CA prior to 2016.

Weighfeeders

SITRANS WW200

Accessories and spare parts

Selection and ordering data

SITRANS WW200 Spare Belts

Endless belt for use with WW200 weighfeeders 7MH7300 to 7MH7308; pulley CL data based on telescoper in fully retracted position

➤ Click on the Article No. for the online configuration in the PIA Life Cycle Portal.

Belt size

12 inch (305 mm) belt width

52 inch (1 321 mm) C/L Infeed to C/L Discharge, 54.5 inch (1 384 mm) pulley C/L to C/L per weighfeeder; total belt length 3 305 mm (130.1 inch)

60 inch (1 524 mm) C/L Infeed to C/L Discharge, 62.5 inch (1 588 mm) pulley C/L to C/L per weighfeeder; total belt length 3 715 mm (146.3 inch)

68 inch (1 727 mm) C/L Infeed to C/L Discharge, 70.5 inch (1 791 mm) pulley C/L to C/L per weighfeeder, total belt length 4 120 mm (162.2 inch)

76 inch (1 930 mm) C/L Infeed to C/L Discharge, 78.5 inch (1 994 mm) pulley C/L to C/L per weighfeeder; total belt length 4 525 mm (178.2 inch)

84 inch (2 134 mm) C/L Infeed to C/L Discharge, 86.5 inch (2 197 mm) pulley C/L to C/L per weighfeeder; total belt length 4 935 mm (194.3 inch)

92 inch (2 337 mm) C/L Infeed to C/L Discharge, 94.5 inch (2 400 mm) pulley C/L to C/L per weighfeeder; total belt length 5 340 mm (210.2 inch)

100 inch (2 540 mm) C/L Infeed to C/L Discharge, 102.5 inch (2 604 mm) pulley C/L to C/L per weighfeeder; total belt length 5 745 mm (226.2 inch)

108 inch (2 743 mm) C/L Infeed to C/L Discharge, 110.5 inch (2 807 mm) pulley C/L to C/L per weighfeeder; total belt length 6 150 mm (242.1 inch)

116 inch (2 946 mm) C/L Infeed to C/L Discharge, 118.5 inch (3 010 mm) pulley C/L to C/L per weighfeeder; total belt length 6 560 mm (258.3 inch)

18 inch (610 mm) belt width

52 inch (1 321 mm) C/L Infeed to C/L Discharge, 54.5 inch (1 384 mm) pulley C/L to C/L per weighfeeder

60 inch (1 524 mm) C/L Infeed to C/L Discharge, 62.5 inch (1 588 mm) pulley C/L to C/L per weighfeeder

68 inch (1 727 mm) C/L Infeed to C/L Discharge, 70.5 inch (1 791 mm) pulley C/L to C/L per weighfeeder

76 inch (1 930 mm) C/L Infeed to C/L Discharge, 78.5 inch (1 994 mm) pulley C/L to C/L per weighfeeder

84 inch (2 134 mm) C/L Infeed to C/L Discharge, 86.5 inch (2 197 mm) pulley C/L to C/L per weighfeeder

92 inch (2 337 mm) C/L Infeed to C/L Discharge, 94.5 inch (2 400 mm) pulley C/L to C/L per weighfeeder

100 inch (2 540 mm) C/L Infeed to C/L Discharge, 102.5 inch (2 604 mm) pulley C/L to C/L per weighfeeder

108 inch (2 743 mm) C/L Infeed to C/L Discharge, 110.5 inch (2 807 mm) pulley C/L to C/L per weighfeeder

116 inch (2 946 mm) C/L Infeed to C/L Discharge, 118.5 inch (3 010 mm) pulley C/L to C/L per weighfeeder

Article No.

7MH7204-



0 A

0 B

0 C

0 D

0 E

0 F

0 G

0 H

0 J

1 A

1 B

1 C

1 D

1 E

1 F

1 G

1 H

1 J

SITRANS WW200 Spare Belts

Endless belt for use with WW200 weighfeeders 7MH7300 to 7MH7308; pulley CL data based on telescoper in fully retracted position

24 inch (610 mm) belt width

52 inch (1 321 mm) C/L Infeed to C/L Discharge, 54.5 inch (1 384 mm) pulley C/L to C/L per weighfeeder

60 inch (1 524 mm) C/L Infeed to C/L Discharge, 62.5 inch (1 588 mm) pulley C/L to C/L per weighfeeder

68 inch (1 727 mm) C/L Infeed to C/L Discharge, 70.5 inch (1 791 mm) pulley C/L to C/L per weighfeeder

76 inch (1 930 mm) C/L Infeed to C/L Discharge, 78.5 inch (1 994 mm) pulley C/L to C/L per weighfeeder

84 inch (2 134 mm) C/L Infeed to C/L Discharge, 86.5 inch (2 197 mm) pulley C/L to C/L per weighfeeder

92 inch (2 337 mm) C/L Infeed to C/L Discharge, 94.5 inch (2 400 mm) pulley C/L to C/L per weighfeeder

100 inch (2 540 mm) C/L Infeed to C/L Discharge, 102.5 inch (2 604 mm) pulley C/L to C/L per weighfeeder

108 inch (2 743 mm) C/L Infeed to C/L Discharge, 110.5 inch (2 807 mm) pulley C/L to C/L per weighfeeder

116 inch (2 946 mm) C/L Infeed to C/L Discharge, 118.5 inch (3 010 mm) pulley C/L to C/L per weighfeeder

30 inch (762 mm) belt width

52 inch (1 321 mm) C/L Infeed to C/L Discharge, 54.5 inch (1 384 mm) pulley C/L to C/L per weighfeeder

60 inch (1 524 mm) C/L Infeed to C/L Discharge, 62.5 inch (1 588 mm) pulley C/L to C/L per weighfeeder

68 inch (1 727 mm) C/L Infeed to C/L Discharge, 70.5 inch (1 791 mm) pulley C/L to C/L per weighfeeder

76 inch (1 930 mm) C/L Infeed to C/L Discharge, 78.5 inch (1 994 mm) pulley C/L to C/L per weighfeeder

84 inch (2 134 mm) C/L Infeed to C/L Discharge, 86.5 inch (2 197 mm) pulley C/L to C/L per weighfeeder

92 inch (2 337 mm) C/L Infeed to C/L Discharge, 94.5 inch (2 400 mm) pulley C/L to C/L per weighfeeder

100 inch (2 540 mm) C/L Infeed to C/L Discharge, 102.5 inch (2 604 mm) pulley C/L to C/L per weighfeeder

108 inch (2 743 mm) C/L Infeed to C/L Discharge, 110.5 inch (2 807 mm) pulley C/L to C/L per weighfeeder

116 inch (2 946 mm) C/L Infeed to C/L Discharge, 118.5 inch (3 010 mm) pulley C/L to C/L per weighfeeder

Article No.

7MH7204-



2 A

2 B

2 C

2 D

2 E

2 F

2 G

2 H

2 J

3 A

3 B

3 C

3 D

3 E

3 F

3 G

3 H

3 J

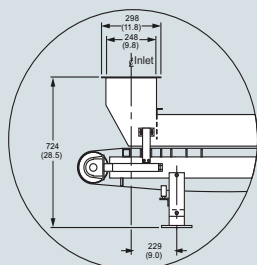
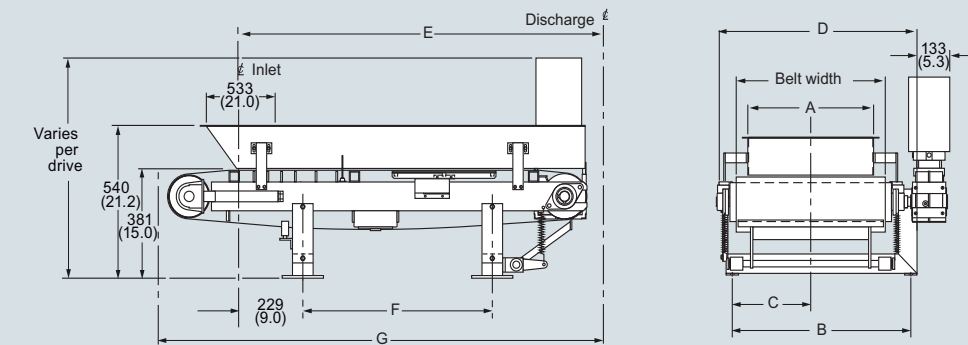
Selection and ordering data	Article No.	Article No.	
SITRANS WW200 Spare Belts Endless belt for use with WW200 weighfeeders 7MH7300 to 7MH7308; pulley CL data based on telescoper in fully retracted position 36 inch (914 mm) belt width 52 inch (1 321 mm) C/L Infeed to C/L Discharge, 54.5 inch (1 384 mm) pulley C/L to C/L per weighfeeder 60 inch (1 524 mm) C/L Infeed to C/L Discharge, 62.5 inch (1 588 mm) pulley C/L to C/L per weighfeeder 68 inch (1 727 mm) C/L Infeed to C/L Discharge, 70.5 inch (1 791 mm) pulley C/L to C/L per weighfeeder 76 inch (1 930 mm) C/L Infeed to C/L Discharge, 78.5 inch (1 994 mm) pulley C/L to C/L per weighfeeder 84 inch (2 134 mm) C/L Infeed to C/L Discharge, 86.5 inch (2 197 mm) pulley C/L to C/L per weighfeeder 92 inch (2 337 mm) C/L Infeed to C/L Discharge, 94.5 inch (2 400 mm) pulley C/L to C/L per weighfeeder 100 inch (2 540 mm) C/L Infeed to C/L Discharge, 102.5 inch (2 604 mm) pulley C/L to C/L per weighfeeder 108 inch (2 743 mm) C/L Infeed to C/L Discharge, 110.5 inch (2 807 mm) pulley C/L to C/L per weighfeeder 116 inch (2 946 mm) C/L Infeed to C/L Discharge, 118.5 inch (3 010 mm) pulley C/L to C/L per weighfeeder 42 inch (1 067 mm) belt width 52 inch (1 321 mm) C/L Infeed to C/L Discharge, 54.5 inch (1 384 mm) pulley C/L to C/L per weighfeeder 60 inch (1 524 mm) C/L Infeed to C/L Discharge, 62.5 inch (1 588 mm) pulley C/L to C/L per weighfeeder 68 inch (1 727 mm) C/L Infeed to C/L Discharge, 70.5 inch (1 791 mm) pulley C/L to C/L per weighfeeder 76 inch (1 930 mm) C/L Infeed to C/L Discharge, 78.5 inch (1 994 mm) pulley C/L to C/L per weighfeeder 84 inch (2 134 mm) C/L Infeed to C/L Discharge, 86.5 inch (2 197 mm) pulley C/L to C/L per weighfeeder 92 inch (2 337 mm) C/L Infeed to C/L Discharge, 94.5 inch (2 400 mm) pulley C/L to C/L per weighfeeder 100 inch (2 540 mm) C/L Infeed to C/L Discharge, 102.5 inch (2 604 mm) pulley C/L to C/L per weighfeeder 108 inch (2 743 mm) C/L Infeed to C/L Discharge, 110.5 inch (2 807 mm) pulley C/L to C/L per weighfeeder 116 inch (2 946 mm) C/L Infeed to C/L Discharge, 118.5 inch (3 010 mm) pulley C/L to C/L per weighfeeder	7MH7204- 	SITRANS WW200 Spare Belts Endless belt for use with WW200 weighfeeders 7MH7300 to 7MH7308; pulley CL data based on telescoper in fully retracted position 48 inch (1 219 mm) belt width 52 inch (1 321 mm) C/L Infeed to C/L Discharge, 54.5 inch (1 384 mm) pulley C/L to C/L per weighfeeder 60 inch (1 524 mm) C/L Infeed to C/L Discharge, 62.5 inch (1 588 mm) pulley C/L to C/L per weighfeeder 68 inch (1 727 mm) C/L Infeed to C/L Discharge, 70.5 inch (1 791 mm) pulley C/L to C/L per weighfeeder 76 inch (1 930 mm) C/L Infeed to C/L Discharge, 78.5 inch (1 994 mm) pulley C/L to C/L per weighfeeder 84 inch (2 134 mm) C/L Infeed to C/L Discharge, 86.5 inch (2 197 mm) pulley C/L to C/L per weighfeeder 92 inch (2 337 mm) C/L Infeed to C/L Discharge, 94.5 inch (2 400 mm) pulley C/L to C/L per weighfeeder 100 inch (2 540 mm) C/L Infeed to C/L Discharge, 102.5 inch (2 604 mm) pulley C/L to C/L per weighfeeder 108 inch (2 743 mm) C/L Infeed to C/L Discharge, 110.5 inch (2 807 mm) pulley C/L to C/L per weighfeeder 116 inch (2 946 mm) C/L Infeed to C/L Discharge, 118.5 inch (3 010 mm) pulley C/L to C/L per weighfeeder Belt type Polyurethane anti static, 1,35 mm thick, FDA approved, white Polyurethane anti static, 1,35 mm thick, FDA approved, blue Polyurethane anti static, 2.9 mm thick, 2 ply FDA approved, white Silicone, Hightemp. belt 180°C (350°F); 2 ply, anti-static, FDA approved Belt design Standard 6 mm B-section flange walls 50 mm (2 inch) corrugated side walls	7MH7204- 
	4 A 4 B 4 C 4 D 4 E 4 F 4 G 4 H 4 J	6 A 6 B 6 C 6 D 6 E 6 F 6 G 6 H 6 J	A B C E 1 2 3
		Selection and ordering data	Order code
		Further designs Please add "-Z" to article no. and specify order code(s). Select next longest option and specify infeed CL to Discharge CL per weighfeeder in plain text (indicated inches or millimeters) Note: Y01 order code info indicates special length on weighfeeder.	Y01
		Operating instructions All literature is available to download for free, in a range of languages, at http://www.siemens.com/weighing/documentation	

Weighfeeders SITRANS WW200

Dimensional drawings and schematics

Dimensional drawings

Open Construction

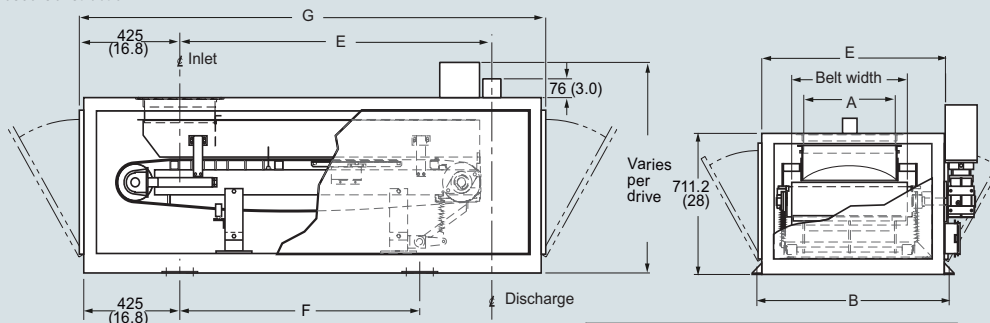


Shear gate infeed version

Open Construction					
Belt width	A	B	C	D	Weight (STD)
305 (12)	203 (8)	425 (16.8)	257 (10.1)	516 (20.3)	600 lb/272 kg
457 (18)	356 (14)	578 (22.8)	333 (13.1)	668 (26.3)	700 lb/318 kg
610 (24)	508 (20)	730 (28.8)	409 (16.1)	820 (32.3)	800 lb/363 kg
762 (30)	660 (26)	883 (34.8)	486 (19.1)	973 (38.3)	900 lb/408 kg
915 (36)	813 (32)	1 035 (40.8)	562 (22.1)	1 125 (44.3)	1 000 lb/453 kg
1 067 (42)	965 (38)	1 187 (46.8)	638 (25.1)	1 278 (50.3)	1 100 lb/499 kg
1 219 (48)	1 118 (44)	1 340 (52.8)	714 (28.1)	1 430 (66.3)	1 200 lb/544 kg

Length adder			
	E	F	G
STD	1 321 (52)	698 (27.5)	1 676 (66)
203 (8)	1 524 (60)	902 (35.5)	1 880 (74)
406 (16)	1 727 (68)	1 105 (43.5)	2 083 (82)
610 (24)	1 930 (76)	1 308 (51.5)	2 286 (90)
813 (32)	2 134 (84)	1 511 (59.5)	2 489 (98)

Closed Construction

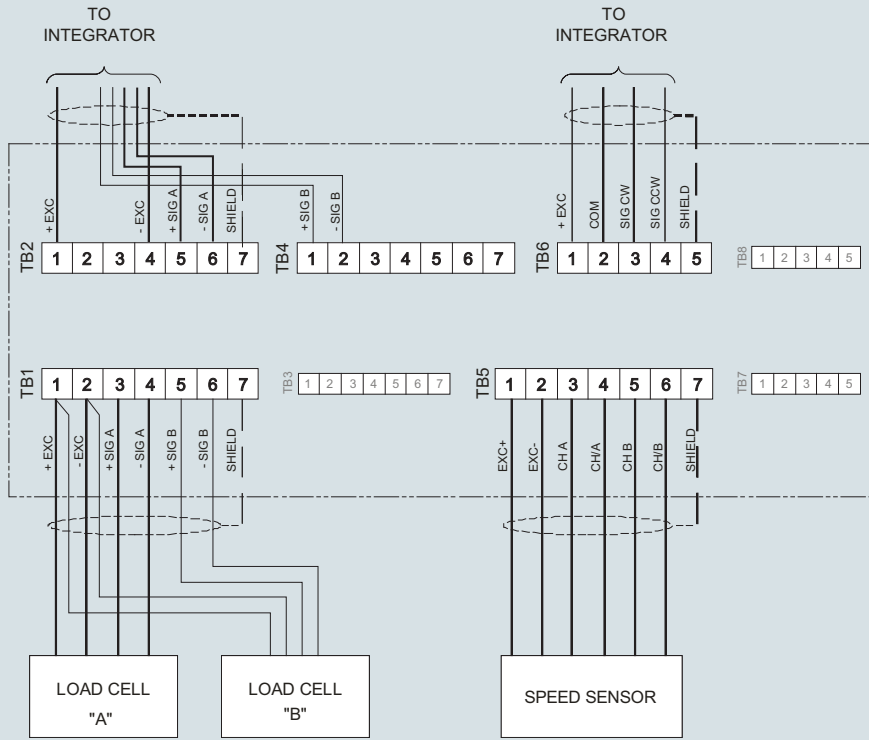


Closed Construction				
Belt width	A	B	C	Weight (STD)
305 (12)	203 (8)	737 (29)	686 (27)	600 lb/272 kg
457 (18)	356 (14)	864 (89)	838 (33)	700 lb/318 kg
610 (24)	508 (20)	1 041 (41)	991 (39)	800 lb/363 kg
762 (30)	660 (26)	1 194 (47)	1 143 (45)	900 lb/408 kg
915 (36)	813 (32)	1 346 (53)	1 295 (51)	1 000 lb/453 kg
1 067 (42)	965 (38)	1 499 (59)	1 448 (57)	1 100 lb/499 kg
1 219 (48)	1 118 (44)	1 651 (65)	1 600 (63)	1 200 lb/544 kg

Length adder			
	E	F	G
STD	1 321 (52)	698 (27.5)	1 676 (66)
203 (8)	1 524 (60)	902 (35.5)	1 880 (74)
406 (16)	1 727 (68)	1 105 (43.5)	2 083 (82)
610 (24)	1 930 (76)	1 308 (51.5)	2 286 (90)
813 (32)	2 134 (84)	1 511 (59.5)	2 489 (98)

SITRANS WW200, dimensions in mm (inch)

Circuit diagrams



Note: termination box not supplied on hazardous rated options.

SITRANS WW200 connections