

Safety laser scanners microScan3

Your Benefits



- Very high machine availability and productivity thanks to the patented safeHDDM® scanning technology
- Flexibility for safe automation processes due to simultaneous protective fields, contour detection fields and detailed data output
- Safe integration into different control systems via EtherNet/IP™, CIP Safety™, PROFINET PROFI-safe, EtherCAT® FSoE, I/O etc.
- Saves time during commissioning and diagnostics thanks to the intuitive Safety Designer software, multi-color display and system plug



- MICS3-AAAZ90BZ1P01** | Part no.: 1089493
Safety laser scanners | microScan3
- **Sub product family:** microScan3 Core I/O AIDA
 - **System part:** Sensor including system plug
 - **Protective field range:** 9 m
 - **Scanning angle:** 275°
 - **Number of fields:** 4
 - **Integration in the control system:** Local inputs and outputs (I/O)
 - **Connection type:** M12 AIDA



- MICS3-CBAZ90EN1P01** | Part no.: 1108228
Safety laser scanners | microScan3
- **Sub product family:** microScan3 Pro – EtherCAT®
 - **System part:** Sensor including system plug
 - **Protective field range:** 9 m
 - **Scanning angle:** 275°
 - **Number of fields:** 128
 - **Integration in the control system:** EtherCAT® FSoE
 - **Connection type:** M12



- MICS3-CBAZ40IZ1P01** | Part no.: 1092542
Safety laser scanners | microScan3
- **Sub product family:** microScan3 Pro – EtherNet/IP™
 - **System part:** Sensor including system plug
 - **Protective field range:** 4 m
 - **Scanning angle:** 275°
 - **Number of fields:** 128
 - **Integration in the control system:** CIP Safety™ over EtherNet/IP™
 - **Connection type:** M12



- MICS3-CCAZ55PZ1P01** | Part no.: 1100392
Safety laser scanners | microScan3
- **Sub product family:** microScan3 Pro – PROFINET
 - **System part:** Sensor including system plug
 - **Protective field range:** 5.5 m
 - **Scanning angle:** 275°
 - **Number of fields:** 128
 - **Integration in the control system:** PROFINET PROFI-safe
 - **Connection type:** RJ45 push-pull AIDA



- MICS3-AAAZ40BZ1P01** | Part no.: 1083078
Safety laser scanners | microScan3
- **Sub product family:** microScan3 Core I/O AIDA
 - **System part:** Sensor including system plug
 - **Protective field range:** 4 m
 - **Scanning angle:** 275°
 - **Number of fields:** 4
 - **Integration in the control system:** Local inputs and outputs (I/O)
 - **Connection type:** M12 AIDA



- MICS3-CCAZ90PZ1P01** | Part no.: 1100394
Safety laser scanners | microScan3
- **Sub product family:** microScan3 Pro – PROFINET
 - **System part:** Sensor including system plug
 - **Protective field range:** 9 m
 - **Scanning angle:** 275°
 - **Number of fields:** 128
 - **Integration in the control system:** PROFINET PROFI-safe
 - **Connection type:** RJ45 push-pull AIDA



- MICS3-ABAZ40PZ1P01** | Part no.: 1100404
Safety laser scanners | microScan3
- **Sub product family:** microScan3 Core – PROFINET
 - **System part:** Sensor including system plug
 - **Protective field range:** 4 m
 - **Scanning angle:** 275°
 - **Number of fields:** 8
 - **Integration in the control system:** PROFINET PROFI-safe
 - **Connection type:** M12



- MICS3-ABAZ90PZ1P01** | Part no.: 1100408
Safety laser scanners | microScan3
- **Sub product family:** microScan3 Core – PROFINET
 - **System part:** Sensor including system plug
 - **Protective field range:** 9 m
 - **Scanning angle:** 275°
 - **Number of fields:** 8
 - **Integration in the control system:** PROFINET PROFI-safe
 - **Connection type:** M12



MICS3-ABAZ55PZ1P01 | Part no.: 1100406
Safety laser scanners | microScan3

- **Sub product family:** microScan3 Core – PROFINET
- **System part:** Sensor including system plug
- **Protective field range:** 5.5 m
- **Scanning angle:** 275°
- **Number of fields:** 8
- **Integration in the control system:** PROFINET PROFIsafe
- **Connection type:** M12



MICS3-ABAZ40IZ1P01 | Part no.: 1082015
Safety laser scanners | microScan3

- **Sub product family:** microScan3 Core – EtherNet/IP™
- **System part:** Sensor including system plug
- **Protective field range:** 4 m
- **Scanning angle:** 275°
- **Number of fields:** 8
- **Integration in the control system:** CIP Safety™ over EtherNet/IP
- **Connection type:** M12



MICS3-ABAZ55IZ1P01 | Part no.: 1082016
Safety laser scanners | microScan3

- **Sub product family:** microScan3 Core – EtherNet/IP™
- **System part:** Sensor including system plug
- **Protective field range:** 5.5 m
- **Scanning angle:** 275°
- **Number of fields:** 8
- **Integration in the control system:** CIP Safety™ over EtherNet/IP™
- **Connection type:** M12



MICS3-AAAZ40AZ1P01 | Part no.: 1075842
Safety laser scanners | microScan3

- **Sub product family:** microScan3 Core I/O
- **System part:** Sensor including system plug
- **Protective field range:** 4 m
- **Scanning angle:** 275°
- **Number of fields:** 8
- **Integration in the control system:** Local inputs and outputs (I/O)
- **Connection type:** M12



MICS3-AAAZ55AZ1P01 | Part no.: 1075843
Safety laser scanners | microScan3

- **Sub product family:** microScan3 Core I/O
- **System part:** Sensor including system plug
- **Protective field range:** 5.5 m
- **Scanning angle:** 275°
- **Number of fields:** 8
- **Integration in the control system:** Local inputs and outputs (I/O)
- **Connection type:** M12



MICS3-ACAZ40PZ1P01 | Part no.: 1083012
Safety laser scanners | microScan3

- **Sub product family:** microScan3 Core – PROFINET
- **System part:** Sensor including system plug
- **Protective field range:** 4 m
- **Scanning angle:** 275°
- **Number of fields:** 8
- **Integration in the control system:** PROFINET PROFIsafe
- **Connection type:** RJ45 push-pull AIDA



MICS3-ACAZ55PZ1P01 | Part no.: 1083010
Safety laser scanners | microScan3

- **Sub product family:** microScan3 Core – PROFINET
- **System part:** Sensor including system plug
- **Protective field range:** 5.5 m
- **Scanning angle:** 275°
- **Number of fields:** 8
- **Integration in the control system:** PROFINET PROFIsafe
- **Connection type:** RJ45 push-pull AIDA



MICS3-ABAZ40ZA1P01 | Part no.: 1092539
Safety systems, Safety laser scanners | Safe EFI-pro

- **Sub product family:** microScan3 Core – EFI-pro
- **System part:** Sensor including system plug
- **Protective field range:** 4 m
- **Scanning angle:** 275°
- **Number of fields:** 8
- **Integration in the control system:** EFI-pro
- **Connection type:** M12



MICS3-ABAZ55ZA1P01 | Part no.: 1092538
Safety systems, Safety laser scanners | Safe EFI-pro

- **Sub product family:** microScan3 Core – EFI-pro
- **System part:** Sensor including system plug
- **Protective field range:** 5.5 m
- **Scanning angle:** 275°
- **Number of fields:** 8
- **Integration in the control system:** EFI-pro
- **Connection type:** M12



MICS3-CBAZ40ZA1P01 | Part no.: 1091037
Safety systems, Safety laser scanners | Safe EFI-pro

- **Sub product family:** microScan3 Pro – EFI-pro
- **System part:** Sensor including system plug
- **Protective field range:** 4 m
- **Scanning angle:** 275°
- **Number of fields:** 128
- **Integration in the control system:** EFI-pro
- **Connection type:** M12



MICS3-CBAZ55ZA1P01 | Part no.: 1091038
Safety systems, Safety laser scanners | Safe EFI-pro

- **Sub product family:** microScan3 Pro – EFI-pro
- **System part:** Sensor including system plug
- **Protective field range:** 5.5 m
- **Scanning angle:** 275°
- **Number of fields:** 128
- **Integration in the control system:** EFI-pro
- **Connection type:** M12



MICS3-AAAZ90AZ1P01 | Part no.: 1089492
Safety laser scanners | microScan3

- **Sub product family:** microScan3 Core I/O
- **System part:** Sensor including system plug
- **Protective field range:** 9 m
- **Scanning angle:** 275°
- **Number of fields:** 8
- **Integration in the control system:** Local inputs and outputs (I/O)
- **Connection type:** M12



MICS3-CBAZ55IZ1P01 | Part no.: 1092543
Safety laser scanners | microScan3

- **Sub product family:** microScan3 Pro – EtherNet/IP™
- **System part:** Sensor including system plug
- **Protective field range:** 5.5 m
- **Scanning angle:** 275°
- **Number of fields:** 128
- **Integration in the control system:** CIP Safety™ over EtherNet/IP™
- **Connection type:** M12



MICS3-CBAZ40PZ1P01 | Part no.: 1092720
Safety laser scanners | microScan3

- **Sub product family:** microScan3 Pro – PROFINET
- **System part:** Sensor including system plug
- **Protective field range:** 4 m
- **Scanning angle:** 275°
- **Number of fields:** 128
- **Integration in the control system:** PROFINET PROFIsafe
- **Connection type:** M12



MICS3-CBAZ55PZ1P01 | Part no.: 1092721
Safety laser scanners | microScan3

- **Sub product family:** microScan3 Pro – PROFINET
- **System part:** Sensor including system plug
- **Protective field range:** 5.5 m
- **Scanning angle:** 275°
- **Number of fields:** 128
- **Integration in the control system:** PROFINET PROFIsafe
- **Connection type:** M12



MICS3-ACAZ90PZ1P01 | Part no.: 1094459
Safety laser scanners | microScan3

- **Sub product family:** microScan3 Core – PROFINET
- **System part:** Sensor including system plug
- **Protective field range:** 9 m
- **Scanning angle:** 275°
- **Number of fields:** 8
- **Integration in the control system:** PROFINET PROFIsafe
- **Connection type:** RJ45 push-pull AIDA



MICS3-CBAZ90IZ1P01 | Part no.: 1094461
Safety laser scanners | microScan3

- **Sub product family:** microScan3 Pro – EtherNet/IP™
- **System part:** Sensor including system plug
- **Protective field range:** 9 m
- **Scanning angle:** 275°
- **Number of fields:** 128
- **Integration in the control system:** CIP Safety™ over EtherNet/IP™
- **Connection type:** M12



MICS3-ABAZ90IZ1P01 | Part no.: 1094457
Safety laser scanners | microScan3

- **Sub product family:** microScan3 Core – EtherNet/IP™
- **System part:** Sensor including system plug
- **Protective field range:** 9 m
- **Scanning angle:** 275°
- **Number of fields:** 8
- **Integration in the control system:** CIP Safety™ over EtherNet/IP™
- **Connection type:** M12



MICS3-ABAZ90ZA1P01 | Part no.: 1094455
Safety systems, Safety laser scanners | Safe EFI-pro

- **Sub product family:** microScan3 Core – EFI-pro
- **System part:** Sensor including system plug
- **Protective field range:** 9 m
- **Scanning angle:** 275°
- **Number of fields:** 8
- **Integration in the control system:** EFI-pro
- **Connection type:** M12



MICS3-CBAZ90ZA1P01 | Part no.: 1094465
Safety systems, Safety laser scanners | Safe EFI-pro

- **Sub product family:** microScan3 Pro – EFI-pro
- **System part:** Sensor including system plug
- **Protective field range:** 9 m
- **Scanning angle:** 275°
- **Number of fields:** 128
- **Integration in the control system:** EFI-pro
- **Connection type:** M12



MICS3-CCAZ40PZ1P01 | Part no.: 1100390
Safety laser scanners | microScan3

- **Sub product family:** microScan3 Pro – PROFINET
- **System part:** Sensor including system plug
- **Protective field range:** 4 m
- **Scanning angle:** 275°
- **Number of fields:** 128
- **Integration in the control system:** PROFINET PROFIsafe
- **Connection type:** RJ45 push-pull AIDA



MICS3-CCAZ55LZ1P01 | Part no.: 1100400
Safety laser scanners | microScan3

- **Sub product family:** microScan3 Pro – PROFINET
- **System part:** Sensor including system plug
- **Protective field range:** 5.5 m
- **Scanning angle:** 275°
- **Number of fields:** 128
- **Integration in the control system:** PROFINET PROFIsafe
- **Connection type:** SCRJ push-pull AIDA



MICS3-CCAZ90LZ1P01 | Part no.: 1100402
Safety laser scanners | microScan3

- **Sub product family:** microScan3 Pro – PROFINET
- **System part:** Sensor including system plug
- **Protective field range:** 9 m
- **Scanning angle:** 275°
- **Number of fields:** 128
- **Integration in the control system:** PROFINET PROFIsafe
- **Connection type:** SCRJ push-pull AIDA



MICS3-CCAZ40LZ1P01 | Part no.: 1100398
Safety laser scanners | microScan3

- **Sub product family:** microScan3 Pro – PROFINET
- **System part:** Sensor including system plug
- **Protective field range:** 4 m
- **Scanning angle:** 275°
- **Number of fields:** 128
- **Integration in the control system:** PROFINET PROFIsafe
- **Connection type:** SCRJ push-pull AIDA



MICS3-ACAZ55LZ1P01 | Part no.: 1100386
Safety laser scanners | microScan3

- **Sub product family:** microScan3 Core – PROFINET
- **System part:** Sensor including system plug
- **Protective field range:** 5.5 m
- **Scanning angle:** 275°
- **Number of fields:** 8
- **Integration in the control system:** PROFINET PROFIsafe
- **Connection type:** SCRJ push-pull AIDA



MICS3-ACAZ40LZ1P01 | Part no.: 1100384
Safety laser scanners | microScan3

- **Sub product family:** microScan3 Core – PROFINET
- **System part:** Sensor including system plug
- **Protective field range:** 4 m
- **Scanning angle:** 275°
- **Number of fields:** 8
- **Integration in the control system:** PROFINET PROFIsafe
- **Connection type:** SCRJ push-pull AIDA



MICS3-ACAZ90LZ1P01 | Part no.: 1100388
Safety laser scanners | microScan3

- **Sub product family:** microScan3 Core – PROFINET
- **System part:** Sensor including system plug
- **Protective field range:** 9 m
- **Scanning angle:** 275°
- **Number of fields:** 8
- **Integration in the control system:** PROFINET PROFIsafe
- **Connection type:** SCRJ push-pull AIDA



MICS3-ABAZ90EN1P01 | Part no.: 1108234
Safety laser scanners | microScan3

- **Sub product family:** microScan3 Core – EtherCAT®
- **System part:** Sensor including system plug
- **Protective field range:** 9 m
- **Scanning angle:** 275°
- **Number of fields:** 8
- **Integration in the control system:** EtherCAT® FSoE
- **Connection type:** M12



MICS3-CBAZ40EN1P01 | Part no.: 1108226
Safety laser scanners | microScan3

- **Sub product family:** microScan3 Pro – EtherCAT®
- **System part:** Sensor including system plug
- **Protective field range:** 4 m
- **Scanning angle:** 275°
- **Number of fields:** 128
- **Integration in the control system:** EtherCAT® FSoE
- **Connection type:** M12



MICS3-ABAZ55EN1P01 | Part no.: 1108232
Safety laser scanners | microScan3

- **Sub product family:** microScan3 Core – EtherCAT®
- **System part:** Sensor including system plug
- **Protective field range:** 5.5 m
- **Scanning angle:** 275°
- **Number of fields:** 8
- **Integration in the control system:** EtherCAT® FSoE
- **Connection type:** M12



MICS3-CBAZ55EN1P01 | Part no.: 1103950
Safety laser scanners | microScan3

- **Sub product family:** microScan3 Pro – EtherCAT®
- **System part:** Sensor including system plug
- **Protective field range:** 5.5 m
- **Scanning angle:** 275°
- **Number of fields:** 128
- **Integration in the control system:** EtherCAT® FSoE
- **Connection type:** M12



MICS3-CBAZ90EN1P01 | Part no.: 1108228
Safety laser scanners | microScan3

- **Sub product family:** microScan3 Pro – EtherCAT®
- **System part:** Sensor including system plug
- **Protective field range:** 9 m
- **Scanning angle:** 275°
- **Number of fields:** 128
- **Integration in the control system:** EtherCAT® FSoE
- **Connection type:** M12



MICS3-ABAZ40EN1P01 | Part no.: 1108230
Safety laser scanners | microScan3

- **Sub product family:** microScan3 Core – EtherCAT®
- **System part:** Sensor including system plug
- **Protective field range:** 4 m
- **Scanning angle:** 275°
- **Number of fields:** 8
- **Integration in the control system:** EtherCAT® FSoE
- **Connection type:** M12

SICK
Sensor Intelligence.

Safety laser scanners
microScan3

The microScan3 safety laser scanner stands for the protection of very different applications: from stationary to mobile, from simple to complex. The innovative safeHDDM® scanning technology makes the microScan3 extremely resistant, even to dust and ambient light, and delivers high-precision measurement data. It increases the productivity and availability of machines. The different variants of the microScan3 can be integrated simply and safely into countless networks. In addition, the safety laser scanner offers standardized connectivity for time-saving commissioning. The microScan3, the easy handling of its Safety Designer configuration software and its diagnostic options combine user-friendly operation, innovation and very high performance.

At a glance

- Innovative safeHDDM® scanning technology
- High-precision measurement data via Ethernet interface
- Protective field range: up to 9 m, scanning angle: 275°
- Up to 128 freely configurable fields and up to 8 simultaneous protective fields
- Standardized communication interfaces
- System plug with configuration memory

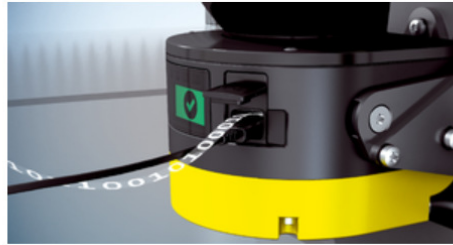
Smart connectivity

Reliable integration of the microScan3 via a network or I/Os – quickly and easily. Secure communication, convenient configuration, and diagnosis either remotely via laptop or centrally within the network. The microScan3 uses standardized plug connectors and is easy to replace, thereby saving time and keeping costs low.

Low cabling costs and fast device replacement with plug and play



First safety laser scanner with EtherCAT® FSoE or EtherNet/IP™ CIP Safety™.



The Mini-USB interface enables the microScan3 to be configured and diagnosed quickly using a laptop.



Flexible and fast installation thanks to the removable system plug with integrated configuration memory on the rear or bottom of the device.

Intuitive operation

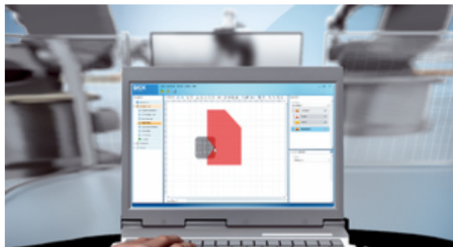
Intuitive configuration and convenient commissioning using the Safety Designer software. The multi-colored display clearly indicates the operational status of the laser scanner. These details and additional information, e.g., on the checksum or an interruption in the protective field, can be easily accessed at the touch of a button and are displayed in cleartext.

Straightforward commissioning and intuitive operation

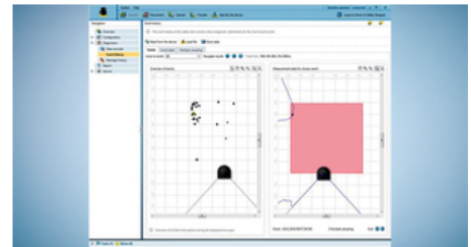


The LEDs and the multi-colored display of the microScan3 are clearly visible.

Important diagnostic data can be viewed via the pushbuttons and display.



The configuration and diagnosis software Safety Designer is easy to use.



Fast analysis of past interruptions thanks to event history. Information about the point in time and place of interruptions is saved.

Fields of applications

- Hazardous area, hazardous point and access protection of stationary applications
- Safety and localization for mobile platforms and mobile robots
- Simultaneous protection of several hazardous areas

Contact your local Chess Controls Representative for more information



Tel. 705-682-2828
Toll free 1-800-461-4076
sales@chesscontrols.com