

## Class 52 Oiltight pilot devices

Siemens 30mm NEMA pilot devices are designed to provide long, trouble-free service in the most demanding applications. Durable plastic Metal Operators with plastic buttons resist oils while internally, contact blocks have double break bifurcated silver contacts which improve overall performance.

### COMMON NON-ILLUMINATED FLUSH BUTTON

**52PM8A1**



30mm Command/52, Chrome Finish Heavy Duty.Watertight/Oiltight Metal Operator, Round Pushbutton Non-Illuminated Flush Button Plastic Cap, Black 2 Position Momentary UL Listed, CSA Certified NEMA 1,3,3R,4,4X,12,13 & Automotive Standards

**52PM8A2**



30mm Command/52, Chrome Finish Heavy Duty.Watertight/Oiltight Metal Operator, Round Pushbutton Non-Illuminated Flush Button Plastic Cap, Red 2 Position Momentary UL Listed, CSA Certified NEMA 1,3,3R,4,4X,12,13 & Automotive Standards

**52PM8A3**



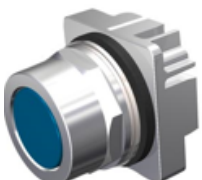
30mm Command/52, Chrome Finish Heavy Duty.Watertight/Oiltight Metal Operator, Round Pushbutton Non-Illuminated Flush Button Plastic Cap, Green 2 Position Momentary UL Listed, CSA Certified NEMA 1,3,3R,4,4X,12,13 & Automotive Standards

**52PM8A4**



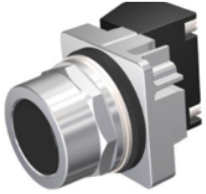
30mm Command/52, Chrome Finish Heavy Duty.Watertight/Oiltight Metal Operator, Round Pushbutton Non-Illuminated Flush Button Plastic Cap, Yellow 2 Position Momentary UL Listed, CSA Certified NEMA 1,3,3R,4,4X,12,13 & Automotive Standards

**52PM8A5**



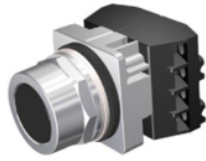
30mm Command/52, Chrome Finish Heavy Duty.Watertight/Oiltight Metal Operator, Round Pushbutton Non-Illuminated Flush Button Plastic Cap, Blue 2 Position Momentary UL Listed, CSA Certified NEMA 1,3,3R,4,4X,12,13 & Automotive Standards

52PM8A1A



30mm Command/52, Chrome Finish Heavy Duty.Watertight/Oiltight Complete Metal Unit Pushbutton Non-Illuminated Flush Button Plastic Cap, Black 2 Position Momentary with 1 N.O. - 1 N.C. Heavy Duty Contacts, A600/P600 UL Listed, CSA Certified NEMA 1,3,3R,4,4X,12,13 & Automotive Standards

52PM8A1B



30mm Command/52, Chrome Finish Heavy Duty.Watertight/Oiltight Complete Metal Unit Pushbutton Non-Illuminated Flush Button Plastic Cap, Black 2 Position Momentary with 2 N.O. - 2 N.C. Heavy Duty Contacts, A600/P600 UL Listed, CSA Certified NEMA 1,3,3R,4,4X,12,13 & Automotive Standards

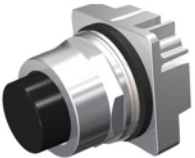
52PM8A1C



30mm Command/52, Chrome Finish Heavy Duty.Watertight/Oiltight Complete Metal Unit Pushbutton Non-Illuminated Flush Button Plastic Cap, Black 2 Position Momentary with 3 N.O. - 3 N.C. Heavy Duty Contacts, A600/P600 UL Listed, CSA Certified NEMA 1,3,3R,4,4X,12,13 & Automotive Standards

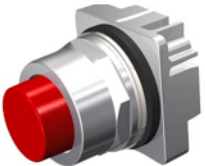
#### NON-ILLUMINATED EXTENDED BUTTON

52PM8B1



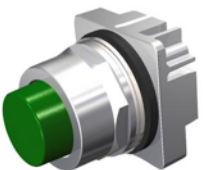
30mm Command/52, Chrome Finish Heavy Duty.Watertight/Oiltight Metal Operator, Round Pushbutton Non-Illuminated Extended Button Plastic Cap, Black 2 Position Momentary UL Listed, CSA Certified NEMA 1,3,3R,4,4X,12,13 & Automotive Standards

52PM8B2



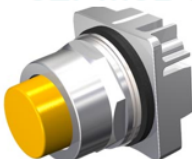
30mm Command/52, Chrome Finish Heavy Duty.Watertight/Oiltight Metal Operator, Round Pushbutton Non-Illuminated Extended Button Plastic Cap, Red 2 Position Momentary UL Listed, CSA Certified NEMA 1,3,3R,4,4X,12,13 & Automotive Standards

52PM8B3

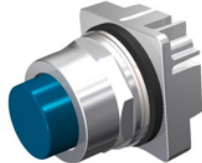


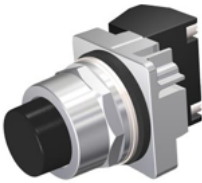
30mm Command/52, Chrome Finish Heavy Duty.Watertight/Oiltight Metal Operator, Round Pushbutton Non-Illuminated Extended Button Plastic Cap, Green 2 Position Momentary UL Listed, CSA Certified NEMA 1,3,3R,4,4X,12,13 & Automotive Standards


52PM8B4





30mm Command/52, Chrome Finish Heavy Duty.Watertight/Oiltight Metal Operator, Round Pushbutton Non-Illuminated Extended Button Plastic Cap, Yellow 2 Position Momentary UL Listed, CSA Certified NEMA 1,3,3R,4,4X,12,13 & Automotive Standards

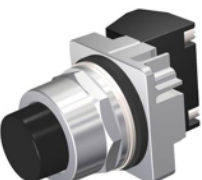
**52PM8B5**  30mm Command/52, Chrome Finish Heavy Duty, Watertight/Oiltight Metal Operator, Round Pushbutton Non-Illuminated Extended Button Plastic Cap, Blue 2 Position Momentary UL Listed, CSA Certified NEMA 1,3,3R,4,4X,12,13 & Automotive Standards


**52PM8B1A**  30mm Command/52, Chrome Finish Heavy Duty, Watertight/Oiltight Complete Metal Unit Pushbutton Non-Illuminated Extended Button Plastic Cap, Black 2 Position Momentary with 1 N.O. - 1 N.C. Heavy Duty Contacts, A600/P600 UL Listed, CSA Certified NEMA 1,3,3R,4,4X,12,13 & Automotive Standards

**52PM8B1B**  30mm Command/52, Chrome Finish Heavy Duty, Watertight/Oiltight Complete Metal Unit Pushbutton Non-Illuminated Extended Button Plastic Cap, Black 2 Position Momentary with 2 N.O. - 2 N.C. Heavy Duty Contacts, A600/P600 UL Listed, CSA Certified NEMA 1,3,3R,4,4X,12,13 & Automotive Standards

**52PM8B1C**  30mm Command/52, Chrome Finish Heavy Duty, Watertight/Oiltight Complete Metal Unit Pushbutton Non-Illuminated Extended Button Plastic Cap, Black 2 Position Momentary with 3 N.O. - 3 N.C. Heavy Duty Contacts, A600/P600 UL Listed, CSA Certified NEMA 1,3,3R,4,4X,12,13 & Automotive Standards

**52PM8B1D**  30mm Command/52, Chrome Finish Heavy Duty, Watertight/Oiltight Complete Metal Unit Pushbutton Non-Illuminated Extended Button Plastic Cap, Black 2 Position Momentary with 4 N.O. - 4 N.C. Heavy Duty Contacts, A600/P600 UL Listed, CSA Certified NEMA 1,3,3R,4,4X,12,13 & Automotive Standards

**52PM8B1E**  30mm Command/52, Chrome Finish Heavy Duty, Watertight/Oiltight Complete Metal Unit Pushbutton Non-Illuminated Extended Button Plastic Cap, Black 2 Position Momentary with 1 N.C. Late Break Heavy Duty Contacts, A600/P600 UL Listed, CSA Certified NEMA 1,3,3R,4,4X,12,13 & Automotive Standards

**52PM8B1F**  30mm Command/52, Chrome Finish Heavy Duty, Watertight/Oiltight Complete Metal Unit Pushbutton Non-Illuminated Extended Button Plastic Cap, Black 2 Position Momentary with 2 N.O. Heavy Duty Contacts, A600/P600 UL Listed, CSA Certified NEMA 1,3,3R,4,4X,12,13 & Automotive Standards



Tel. 705-682-2828

Website: [www.chesscontrols.com](http://www.chesscontrols.com)

