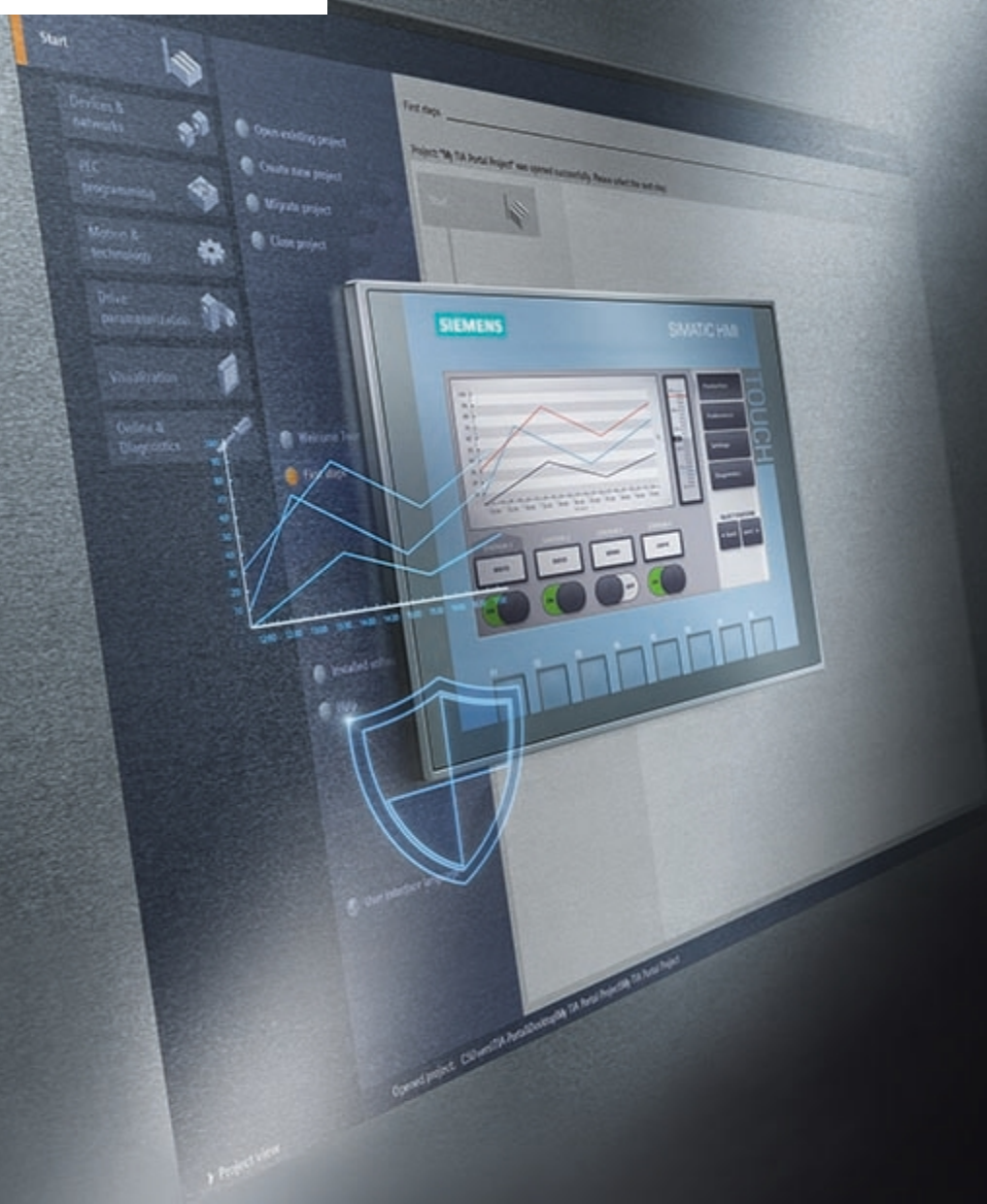
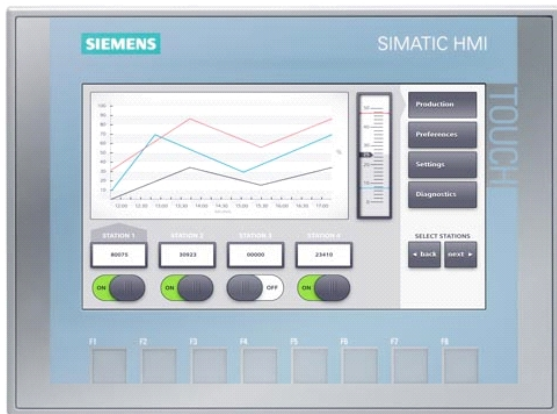


**SIEMENS**



# Product overview for Basic Panel

TIA Selection Tool Web



## SIMATIC Basic Panel 2nd Generation

### Cost-effective operation and monitoring in the second generation

SIMATIC Basic Panels 2nd Generation are suitable for cost-effective implementation of simple visualization tasks on the machine level. Their basic features and functionality as well as an attractive price make them perfect entry-level devices.

The Basic Panels 2nd Generation are suited for simple applications, compact systems and smaller applications with a limited configuration scale, where fast and intuitive operation is as important as the price-performance ratio.

<http://www.siemens.com/basic-panels-2nd-generation>

## Highlights

### Improved process quality of compact systems and smaller applications through visualization

- Integration of all important HMI basic functions thus opens up new possibilities for operating and monitoring in mechanical engineering at an especially attractive price.
- Standard integration of numerous software functions, such as alarm system, recipe management, trend functionality and language switching.
- Improved usability through new controls and graphics.

### High degree of user-friendliness thanks to innovative graphical user interface

- User-friendly touch screens and especially practical, freely configurable keys.
- Integrated USB interface for connecting keyboard, mouse or barcode scanner and easy archiving of data on USB stick.
- Connection to various PLCs by integrating PROFIBUS and PROFINET interfaces.
- Visualization of applications of the modular, compact SIMATIC S7-1200 controllers.

### Efficient engineering ensures cost and time savings

- Integrated engineering framework for controllers, HMIs and drives in the TIA Portal.


### High Resolution Widescreen Displays

- Optional use of high resolution widescreen displays from 4" - 12". These can be installed in traditional horizontal format as well as vertical; the configuration software supports both installation alternatives.
- Improved process representation is possible thanks to the high resolution and the color depth of 64,000 colors. The brightness of the displays can be dimmed to 100% and thus offers optimum flexibility.


### Scalable software for easy configuration

- The configuration is performed with SIMATIC WinCC (TIA Portal) in the inexpensive basic version. The intuitive usability and unique configuration efficiency of the engineering framework is provided even in this version.
- As requirements increase, projects created for a Basic Panel can be easily transferred to devices of other performance classes or display sizes.

## Basic Panel

	Article number	
	SIMATIC HMI KTP400 Basic	6AV2123-2DB03-0AX0
	SIMATIC HMI KTP700 Basic DP	6AV2123-2GA03-0AX0
	SIMATIC HMI KTP700 Basic	6AV2123-2GB03-0AX0
	SIMATIC HMI TP700 Basic OEM	6AV2143-6GB00-0AA0
	SIMATIC HMI KTP900 Basic	6AV2123-2JB03-0AX0
	SIMATIC HMI KTP1200 Basic DP	6AV2123-2MA03-0AX0
	SIMATIC HMI KTP1200 Basic	6AV2123-2MB03-0AX0
	SIMATIC HMI KP300 Basic mono PN	6AV6647-0AH11-3AX0
	SIMATIC HMI KP400 Basic Color PN	6AV6647-0AJ11-3AX0


## Accessories

	Article number	
	SIMATIC HMI USB memory stick, 8 GB	6AV2181-8AS20-0AX0
	USB flash drive, 32 GB	6AV6881-0AS42-0AA1
	Protect. Film 4" Widescreen	6AV2124-6DJ00-0AX0
	RS422 to RS232 converter	6AV6671-8XE00-0AX0
	RS422 to TTY converter	6AV6671-8XJ00-0AX0
	90 degree bracket adapter, 1:1	6AV6671-8XD00-0AX0
	Connector, female, 2-pin, type 1	6AV6671-8XA00-0AX0
	Touch pen, thin, resistive	6AV6645-7AB14-0AS0
	Touch pen system	6AV2181-8AV20-0AX0
	Touch pen caps	6AV2181-8AV60-0AX0
	Plastic mounting clip	6AV6671-8XK00-0AX2
	Protect. film 7" widescreen	6AV2124-6GJ00-0AX0
	Protect. Film 9" Widescreen, Type 2	6AV2181-3JJ20-0AX0
	Protect. Film 12" Widescreen, Type 2	6AV2181-3MJ20-0AX0

## Starter kits

	Article number	
	LOGO! 0BA8 + KTP400 Basic Starterkit	6AV2132-0KA00-0AA1
	SIMATIC S7-1200+KTP400 Basic Starter Kit	6AV6651-7KA01-3AA4
	LOGO! 0BA8 + KTP700 Basic Starterkit	6AV2132-3GB00-0AA1
	SIMATIC S7-1200+KTP700 Basic Starter Kit	6AV6651-7DA01-3AA4
	LOGO! 0BA8 + KP300 Basic Starterkit	6AV2132-0HA00-0AA1
	SIMATIC S7-1200+KP300 Basic Starter Kit	6AV6651-7HA01-3AA4

## SIPLUS

	Article number	
	SIPLUS HMI KTP400 BASIC	6AG1123-2DB03-2AX0
	SIPLUS HMI KTP700 BASIC DP	6AG1123-2GA03-2AX0
	SIPLUS HMI KTP700 BASIC	6AG1123-2GB03-2AX0
	SIPLUS HMI KTP900 BASIC	6AG1123-2JB03-2AX0
	SIPLUS HMI KTP1200 BASIC DP	6AG1123-2MA03-2AX0
	SIPLUS HMI KTP1200 BASIC	6AG1123-2MB03-2AX0
	SIPLUS HMI KP300 BASIC MONO 3,6" T1 RAIL	6AG2647-0AH11-1AX0
	SIPLUS HMI KP300 BASIC MONO PN 3,6"	6AG1647-0AH11-2AX0

 : Safety-related component

\* By clicking on the article number, you will be taken to the product in the TIA Selection Tool cloud.

Published by  
Siemens AG

Digital Industries  
Factory Automation  
P.O. box 4848  
90026 Nuremberg  
Germany

For U.S. only:  
Siemens Industry Inc.

100 Technology Drive  
Alpharetta, GA 30005  
United States

Copyright© 2021 Siemens

The TIA SELECTION TOOL and all its editions are made available to you at no charge. We therefore do not assume any warranty, in particular for the accuracy, correctness, completeness, availability or usability of this tool. Our liability for damages resulting from using the examples, help notes, programs, configuration and performance data, etc. described in this TIA SELECTION TOOL and all its editions regardless of the legal background is excluded unless required by law, e.g. in cases of willful misconduct, gross negligence, personal injury or death, failure to achieve guaranteed characteristics or fraudulent concealment of a defect or in case of breach of fundamental contractual obligations. Distribution or reproduction of this TIA SELECTION TOOL and all its editions or excerpts from it is prohibited unless expressly permitted by Siemens. The latest firmware and hardware versions are configured in the TIA Selection Tool.