

# SIEMENS



[usa.siemens.com/switchgear](http://usa.siemens.com/switchgear)

## Type WL low voltage switchgear

### Equipment ratings

- 635V AC maximum
- 3 phase 3 wire, 3 phase 4 wire
- 50/60 Hz
- 6000 amp maximum horizontal bus
- 6000 amp maximum vertical bus
- Silver plated copper bus standard – tin plated copper optional
- Standard bus bracing 100kA – optional up to 200kA
- NEMA 1 Indoor, NEMA 3R outdoor (walk-in) and NEMA 3R (non- walk-in) enclosure options
- Three levels of horizontal bus through 5000 amps
- Insulated / isolated bus through 6000 amps

### Circuit breaker ratings

- 800 to 6000 amp frame ratings (100% rated)
- 3 pole and 4 pole breakers
- Interrupting ratings from 50kA to 150kA (un-fused) and 200kA (fused)
- Manually or electrically operated
- Draw-out construction

### Industry standards compliance

- ANSI: C37.13, C37.16, C37.17, C37.20.1, C37.50, C37.51
- UL: 1066, 1558
- NEMA: SG3, SG5
- CSA: C22.2 No. 31 (Optional cUL labeling)
- IEEE C37.20.7 (Optional arc resistant design)
- Optional marine certification to ABS, DNV, Lloyd's of London or USCG



## Features and benefits

### Reliable

- Increased breaker endurance (operations)
- Extended instantaneous protection
- Precision protection and metering capabilities (includes protective relaying functions and power quality analysis)

### Compact

- Industry leading equipment footprint

### Easy to use

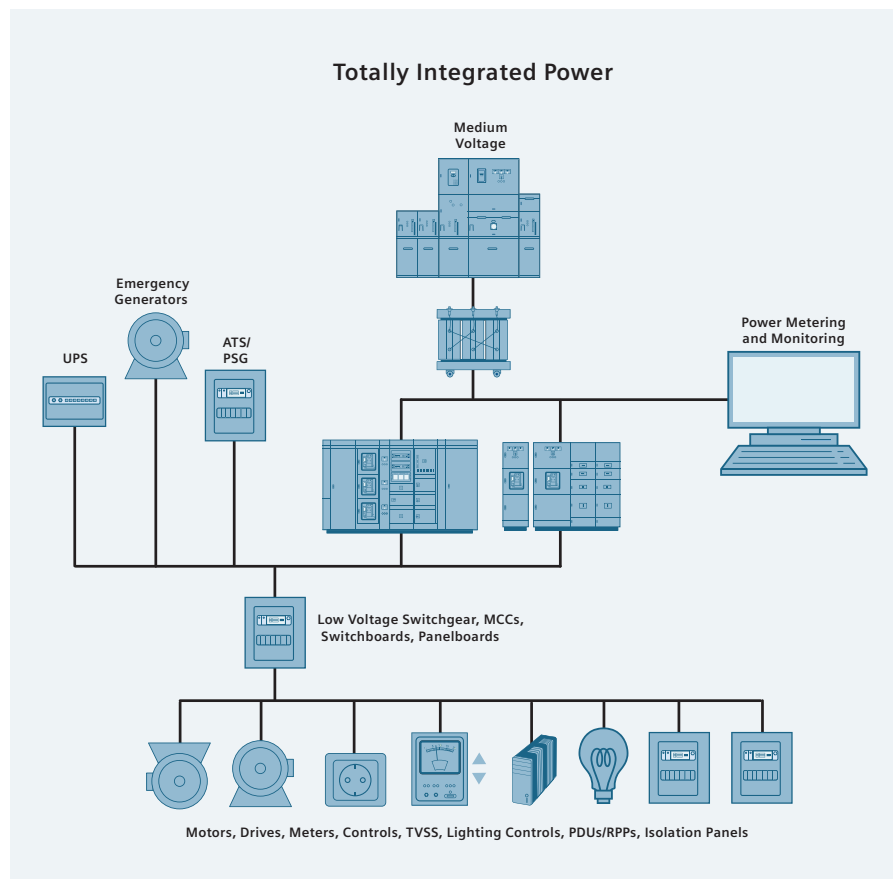
- Integrated racking handle
- Pull-apart front-mounted terminal blocks
- Simple selection and application tools

### Modular and flexible

- Front-mounted common plug-in accessories
- Field upgradeable trip units
- Field changeable contacts and arc chutes
- Field installable GF and ZSI
- Field installable breaker digital input and output modules

### System solution

- Monitoring and control through Ethernet, MODBUS, or PROFIBUS communications
- Supports energy management through advanced metering and quality analysis
- Totally Integrated Power and Totally Integrated Automation integration



### Safety

- Dynamic Arc Flash Sentry (arc fault hazard reduction) using the patented dual breaker parameter setting capability of the Siemens WL breaker
- Type 2B arc resistant (IEEE C37.20.7)
- Sm@rtGear™ low voltage switchgear that provides out-of-the-box remote monitoring, configuration and control of Siemens WL breakers and other intelligent devices embedded in the Siemens Type WL low voltage switchgear

- IBC 2015 seismic compliance
- Visible ready-to-close indication
- Customizable interlocking
- Front accessible control and communication wiring terminations
- No front breaker door ventilation

### Available support tools

- WL Switchgear Selection and Application Guide
- WL Circuit Breaker Selection and Application Guide

Published by  
Siemens Industry, Inc.  
2016.

Siemens Industry, Inc.  
5400 Triangle Parkway  
Norcross, GA 30092

For more information, please contact  
our Customer Support Center.  
Phone: 1-800-241-4453  
E-mail: [info.us@siemens.com](mailto:info.us@siemens.com)  
[usa.siemens.com/switchgear](http://usa.siemens.com/switchgear)  
Order No. LVFL-SOLFL-0216  
Printed in U.S.A.  
© 2016 Siemens Industry, Inc.

Subject to changes and errors. The information given in this document only contains general descriptions and/or performance features which may not always specifically reflect those described, or which may undergo modification in the course of further development of the products. The requested performance features are binding only when they are expressly agreed upon in the concluded contract.