

Human Body Temperature Screening

Protect people from potential coronavirus carriers and those with other infectious diseases – the VIRALERT systems screens visitors at entry for elevated temperatures that could indicate fever.

Unlike handheld thermometers which compromise social distancing, the VIRALERT automatic screening system scans from a distance that complies with social distancing. Visual and audible alerts provide the warning you need to keep everyone safe.

Developed over ten years by AMETEK Land's world-leading temperature monitoring experts, the VIRALERT is a real-time scanning solution that's safe, accurate, and easy to use.



VIRALERT 3 - Human Body Temperature Screening System

A real-time visual and thermal scanning solution that's safe, accurate, and easy to use. [Keep Reading](#)



VIRALERT 3 Lite - Thermal Human Body Temperature Screening System

An automatic thermal screening system that scans from a distance that complies with social distancing. [Keep Reading](#)



vIRAlert 2: Human Body Temperature Measurement System

A high performance, compact thermal imaging camera system designed for wide range screening of human body temperature measurements. [Keep Reading](#)



Safe, accurate temperature screening you can trust, designed to keep people safe wherever they are.

Overview



Unlike handheld thermometers which compromise social distancing, the VIRALERT 3 automatic screening system scans from a distance that complies with social distancing. Visual and audible alerts provide the warning you need to keep everyone safe.

Developed over ten years by AMETEK Land's world-leading temperature monitoring experts, the VIRALERT 3 is a real-time scanning solution that's safe, accurate, and easy to use.

VIRALERT 3 ALL-IN-ONE SCREENING SYSTEM

SAFE

- Non-contact temperature monitoring camera
- Immediately detects elevated skin temperature
- Scans in compliance with social distance requirements

EASY

- Intuitive user control
- Audible alarm and on screen notification

- Automated operation option

ACCURATE

- Fixed calibration source ensures reliability
- Supported by 70+ years of industry expertise
- Automatic face detection for best monitoring points

SPECIFICATION OVERVIEW

ACCURACY

± 0.5 °C (± 0.9 °F) at a distance of 1m.

SOFTWARE

Continuous live thermal and visual image with automatic face detection. Abnormal high temperatures displayed in red, with on-screen and audio alarms. Calculates core temperature from measured skin temperature.

IMAGER

Connects to a local PC for display and power needs. Operates between 10 to 50 °C (50 to 122 °F).

IMAGER VISUAL

CMOS colour sensor 1.2 MP (1280x960) resolution at 12 fps.

IMAGER THERMAL

With a measurement range between 30 to 45 °C (86 to 113 °F), the imager has a 39x31° field of view, frame rate of <9Hz, and temperature resolution of <0.12 °C (<0.22 °F).

BLACKBODY REFERENCE SOURCE

Powered by 5V DC (USB) from a universal power adaptor, the fixed temperature reference source is at 38 °C (100.4 °F) for a combined accuracy/stability of ± 0.2 °C (± 0.3 °F).

Protect people from potential coronavirus carriers and those with other infectious diseases – the VIRALERT 3 screens visitors at entry for elevated temperatures that could indicate fever.



Safe, accurate temperature screening you can trust, designed to keep people safe wherever they are.

Overview



the VIRALERT 3 LITE screens visitors at entry for elevated temperatures that could indicate fever.

Unlike handheld thermometers which compromise social distancing the VIRALERT 3 LITE automatic screening system scans from a distance that complies with social distancing. Visual and audible alerts provide the warning you need to keep everyone safe.

Developed over ten years by AMETEK Land's world-leading temperature monitoring experts, the VIRALERT 3 LITE is a real-time scanning solution that's safe, accurate, and easy to use.

VIRALERT 3 LITE ALL-IN-ONE SCREENING SYSTEM

SAFE

- Non-contact temperature monitoring camera
- Immediately detects elevated skin temperature
- Scans in compliance with social distance requirements

EASY

- Intuitive user control
- Audible alarm and on screen notification
- Pre-configured software

ACCURATE

- Fixed calibration source ensures reliability
- Supported by 70+ years of industry expertise
- Automatic detection of hottest part of face

SPECIFICATION OVERVIEW

ACCURACY

± 0.5 °C (± 0.9 °F) at a distance of 1m.

SOFTWARE

Continuous live thermal image. Abnormal high temperatures displayed in red, with on-screen and audio alarms.

IMAGER

Connects to a local PC for display and power needs. Operates between 10 to 50 °C (50 to 122 °F).

IMAGER THERMAL

With a measurement range between 30 to 45 °C (86 to 113 °F), the imager has a 39x31° field of view, frame rate of <9Hz, and temperature resolution of <0.12 °C (<0.22 °F).

BLACKBODY REFERENCE SOURCE

Powered by 5V DC (USB) from a universal power adaptor, the fixed temperature reference source is at 38 °C (100.4 °F) for a combined accuracy/stability of ± 0.2 °C (± 0.3 °F).

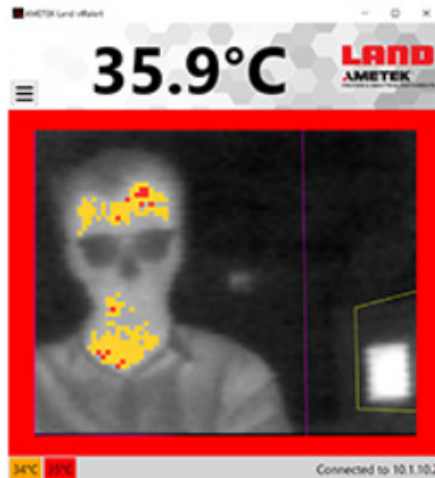
vIRalert 2

HUMAN BODY TEMPERATURE MEASUREMENT SYSTEM



A high performance, compact thermal imaging camera system designed for wide range screening of human body temperature measurements in Fahrenheit scale at mass screening or high pedestrian areas like airports, train stations, key operational facilities.

Overview



The vIRalert 2 fixed temperature monitoring system provides remote measurement of human body temperature (typically the face) to an accuracy of within 0.5°C / 0.9°F enabling the detection of the small changes in temperature induced by a fever.

Most economical thermal imagers can only achieve accuracy to within 2°C / 3.6°F which is not adequate to detect a fever however by calibrating an imager in real time against a precise blackbody calibration source the vIRalert 2 system can provide accurate and reliable skin temperature measurement for the screening of personnel at point of entry to areas like airports, train stations, key operational facilities and factories and other places where infectious diseases can easily spread.

Using simple and intuitive software, this point-of-entry system provides automatic on-screen and audible alarms to alert the operator so that early action can be taken to protect the premises against the risk of spreading the infection.

KEY BENEFITS

- **Instant non-intrusive measurement** using infrared thermal imaging technology with market-lead temperature measurement accuracy.
- **Monitors for high temperature** without slowing down the flow of people.
- **Fixed remote measurement** removes the risk of infection transmission to operators.
- **Complete On-line System Solution** works out of the box and is simple to operate.
- **Quick and easy to install and re-locate** as required with standard camera fitting for flexible mounting options.
- **Automatic alert function** reduces potential for human error and immediately alerts the operator if trigger point reached.

KEY APPLICATIONS

- **Transport and Travel** - Airports, Railway Stations, Subways, Underground Rail Systems, Large Public Buildings
- **Education** - Schools, Colleges, Universities, Municipal Libraries
- **Business** - Manufacturing Facilities, Warehouses, Offices, Government Buildings

SPECIFICATION & DESIGN

- **Thermal Imaging Camera** - Continuously measuring 30 to 45°C / 86 to 113°F, with a 39 x 31° field of view and 80 x 64 resolution gives 5,210 temperature data points per frame, at a rate of 9 Hz.
- **Blackbody Heat Source** - Providing a trusted reference temperature value calibrated at 38 °C / 100.4 °F for the thermal imaging camera with a large plate for viewing at longer distances.
- **Connecting Cables** - Ethernet and Power between camera and laptop (4m / 13ft).
- **Flexible Mountings** - Camera supplied with wall mounting bracket and standard 1/4-20 UNC thread for use with alternative mounting options. Wall mounting lugs on calibration source enable easy fitting with wall hooks.
- **Screening Software** - Continuous or still image showing normal temperature in black and white with abnormally high temperatures in red. On screen and audio alarm triggered if potential fever detected. Supply of Windows 10 Laptop for running software is optional.
- **Calibration** - Each system is calibrated using standards that are traceable to our ISO17025 accredited lab in the UK.
- **Made in the United Kingdom**

A typical detection distance of 1 metre, provides a field of view of 70 x 55 cm so that checks can be made without any contact with the operator.

Made in the UK, the viRalert 2 is AMETEK Land's accurate thermal imaging system for human body temperature measurement.



Tel. 705-682-2828

Website: www.chesscontrols.com



MEASUREMENT
INSTRUMENTATION



PLANT
AUTOMATION



POWER AND
DRIVES



VALVES AND
ACTUATION



PACKAGED
TECHNOLOGIES

