



Liebert®

EXM UPS

10-250 kVA/kW

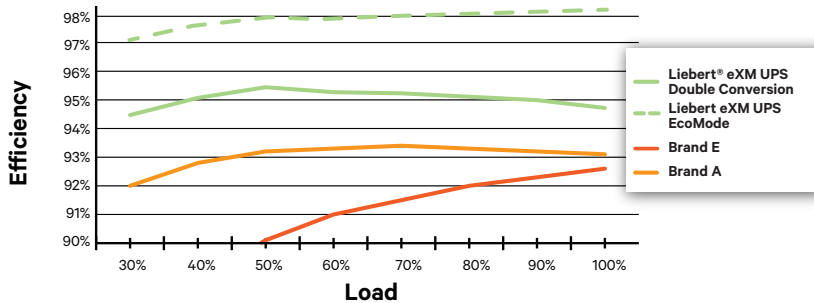
Efficient, Scalable, Intelligent  
Power Optimized for Midsize IT



## A Midsize UPS As Dynamic As Your Needs

### Liebert® EXM 3-Phase AC UPS

- 10-250kVA, 208 & 480 Volt Native
- Unity Power Factor
- Up to 99% Efficient
- Optimized Ancillaries provide Flexible Deployment
- UL 924 Listed
- Next Generation Scalable Functionality
- Next Generation Touchscreen Control Panel
- 480V Models Qualified for Use with Lithium-ion Batteries and Flywheels

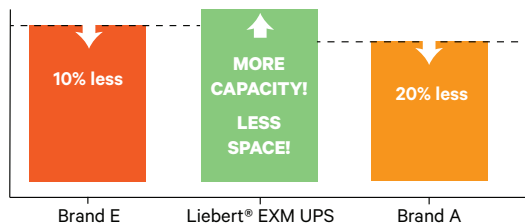


### Efficient and Economical So You Can Control Your Costs

The Liebert EXM UPS was purposefully designed to provide efficient power protection that can meet your operating and capital requirements.

- Unity Power Factor ensures more power is provided in a smaller footprint, thus increasing system capacity while minimizing cabling and installation costs
- Delivers high efficiency levels throughout the capacity range
- 208 or 480 volt systems
- Transformer-free design saves space, capital, weight and shipping costs
- Superior operating efficiencies are realized through both the Eco-Mode option, which performs at 99% and the Double Conversion Mode, which delivers 97% (480V models)
- ENERGY STAR® qualified

### Unity Power Factor Makes a Difference



Based on a 100kVA 100A  
100% rated breaker

### The Liebert EXM UPS is ideal for:

- Small to midsize IT applications
- Edge of the network operations
- Midsize/regional colocation facilities
- Testing, medical and telecom systems
- Emergency lighting



## Flexible Configurations and Deployment Options

### Adapt and Scale with Ease

The flexible, scalable, redundant design of the Liebert® EXM UPS is available in many system configurations to ensure optimal power protection.



Up to 100kW 208V

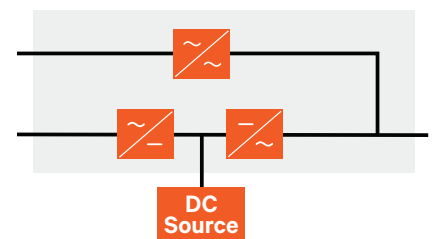
Up to 200kW 208V

Up to 250kW 480V  
(200kVA shown)

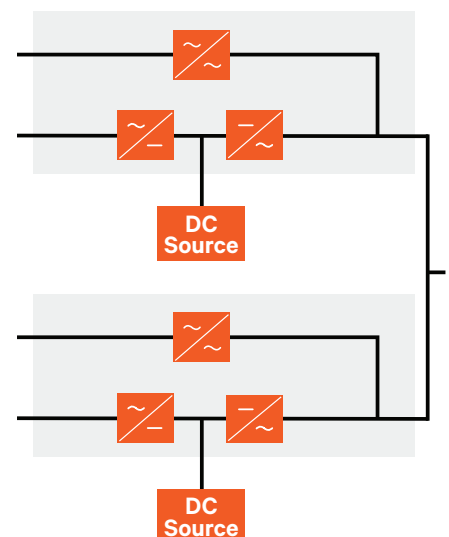


GROW	FROM	TO
<p>Flexible Scalability Paths Meet Your Capacity/ Redundancy Plans</p> <ul style="list-style-type: none"> <li>• Rapid deployment</li> <li>• Reduce the pains of predicting capacity</li> <li>• Configure for N+1 redundancy</li> </ul>	10kW 208V Internal Batteries	40kW 208V Internal Batteries
	20kW 208V	100kW 208V
	20kW 208V	200kW 208V
	50kW 480V	200kW 480V
	50kW 480V	250kW 480V

### Single Module System (SMS)



### Distribute Bypass



### Availability Designed In

On-line, double conversion design delivers reliable power and highest levels of uptime.

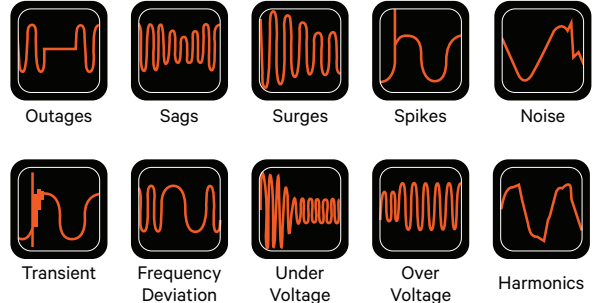
- Multi-module configurations enhance availability
- Internally redundant design reduces switches to bypass
- Standard 65kA short circuit withstand rating (certain conditions may apply)
- Easy access to key components
- High Mean Time Between Failure (MTBF) performance
- Redundant communication paths ensures reliable control

## Capacity, Redundancy, Flexibility

The Liebert® EXM UPS provides future-proof scalability along with matching ancillary cabinets to address your power system demands.

- Maintenance bypass cabinet
- Bypass and distribution cabinet
- Battery cabinet (many run time options), Lithium-ion available with 480V models
- Dual input transformer cabinet
- Paralleling cabinet (parallel for higher capacity or redundancy)

## Protection from critical power problems



## Optimized Ancillaries (various sizes available)



## Multi-Module Flexibility

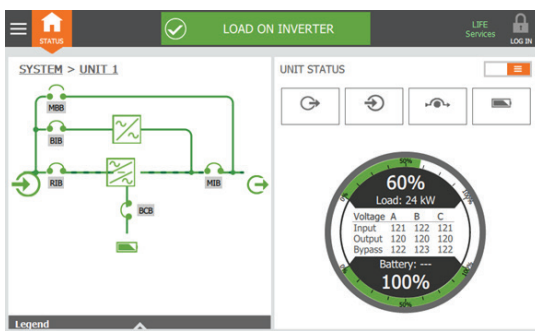
- Matching Paralleling Cabinet supports up to a 2+1 configuration
- Options for up to 4+0 can be supported using third party switchgear



## Intuitive, Intelligent Operation at Every Level

### Touch-Screen Control Panel Offers Intelligent Control

- Intuitive, easy to use to reduce chances of human error
- Improves productivity by providing information you need
- Power performance parameters visualized
- Service and maintenance support at your fingertips
- Compatible with The *Trellis™* Platform



### Optional Integrated Albér® Battery Monitoring Systems

- Advance warning of pending UPS battery failures
- Real-time system and component level visibility
- Verify the health of the entire battery system
- Integrated into the battery cabinet



Alber™ BDSUi Battery Monitor

### Communications and Environmental Monitoring:

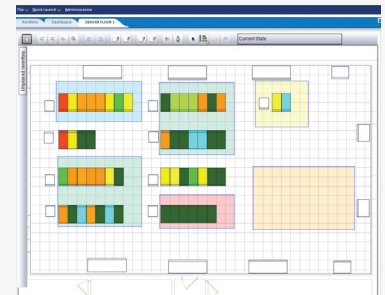
Leverage the capabilities of our Unity Communications card and sensors to easily daisy chain together data inputs.

- Temperature
- Humidity
- Access
- Leaks
- More

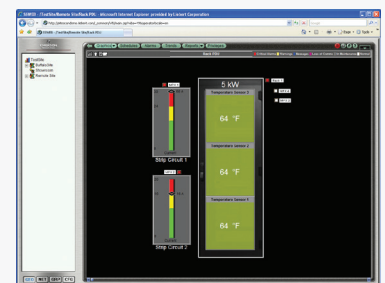


## SOFTWARE

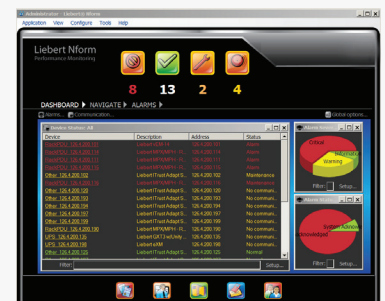
Software to Match Your Needs



The Trellis™ Platform



Liebert® SiteScan®

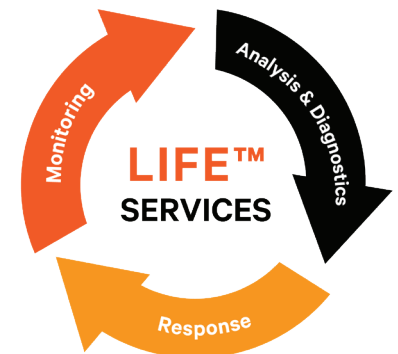


Liebert® Nform

## Critical Services And Support

### Life™ Services

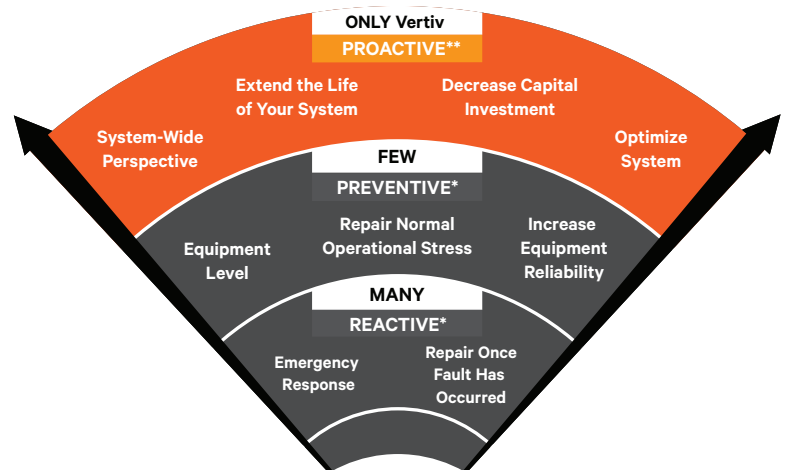
- 24x7 continuous remote monitoring
- Expert analysis and diagnosis
- Quick, safe and accurate response
- Just one of the professional service & support options available to improve uptime, cost control and resource allocation



### Liebert® Services

Maximizing the performance and efficiency of your data center's uninterruptible power supply (UPS) and other power distribution systems requires systems be properly maintained by factory-trained technicians. Trust Vertiv, Liebert Services to take your critical maintenance to the next level-proactive maintenance that can significantly extend the life of your power systems, decrease your capital investment, optimize system efficiency and effectiveness, and increase overall system availability.

- 24x7 critical maintenance response
- Proactive service, extends system life
- Improved MTBF and MTTR
- Local factory trained engineers ready to respond
- Parts, expertise, satisfaction



## Specifications

		208V Native	208V Native	480V Native	
	<b>Power Rating – kW/kVA</b>	10, 15, 20, 30, 40	60, 80, 100, 120, 140, 160, 180, 200	30, 40, 50, 75, 100, 125, 150, 175, 200, 225, 250	
	<b>Internal Battery Supported</b>	Y	N	N	
<b>Input AC Specifications</b>	Phase/Power Factor/ Freq		3 / 0.99 lagging minimum at full load / 40-70 Hz		
	Input Voltage	208, 220, 480 <sup>1</sup> , 600 <sup>1</sup> VAC, 60Hz, 3-phase, 4-wire plus ground			
<b>General Specifications</b>	UPS Technology	On-Line Double Conversion			
<b>Battery Specifications</b>	Battery Test Type/ Battery Technology	Online / Valve-regulated lead acid battery / Lithium-ion (for 480V only)			
<b>Output AC Specifications</b>	Voltage	208/120, 220/127VAC, 60Hz 3-phase, 3- or 4-wire plus ground	480VAC, 60Hz 3-phase, 3-wire plus ground		
	Frequency – Hz	60 Hza			
<b>Communications</b>	Options	3 Liebert IntelliSlots			
	Card Compatibility	IS-UNITY-DP, IS-UNITY-LIFE, IS-485EXI, IS-RELAY			
	Protocols Available	MODBUS-IP, MODBUS-485, BACNET-IP, BACNET-MSTP, SNMP, HTTP, LIFETM Services, Relay Contacts			
<b>Environmental Sensors</b>	Liebert SN Series	Temperature, Humidity, Temperature/Humidity Combination, Contact Closure			
<b>Physical Data UPS</b>	<b>UPS Rating</b>	<b>Unit Weight lb (kg)</b>	<b>Dimensions, W X D X H in (mm)</b>	<b>Unit Weight lb (kg)</b>	<b>Dimensions, W X D X H in (mm)</b>
	10kVA, 15kVA, 20kVA	604 (274)	23.6 x 39.5 x 78.7 (600 x 1000 x 2000)	N/A	N/A
	30kVA, 40kVA	678 (307.5)	23.6 x 39.5 x 78.7 (600 x 1000 x 2000)	748 (339)	23.6 x 39.5 x 78.7 (600 x 1000 x 2000)
	50kVA	678 (307.5)	23.6 x 39.5 x 78.7 (600 x 1000 x 2000)	748 (339)	23.6 x 39.5 x 78.7 (600 x 1000 x 2000)
	60kVA	807 (366)	23.6 x 39.5 x 78.7 (600 x 1000 x 2000)	N/A	N/A
	75kVA	N/A	N/A	842 (382)	23.6 x 39.5 x 78.7 (600 x 1000 x 2000)
	80kVA	881 (399.6)	23.6 x 39.5 x 78.7 (600 x 1000 x 2000)	N/A	N/A
	100kVA	955 (433.1)	23.6 x 39.5 x 78.7 (600 x 1000 x 2000)	842 (382)	23.6 x 39.5 x 78.7 (600 x 1000 x 2000)
	120kVA	1221 (553.8)	34.6 x 39.5 x 78.7 (880 x 1000 x 2000)	N/A	N/A
	125kVA	N/A	N/A	936 (425)	23.6 x 39.5 x 78.7 (600 x 1000 x 2000)
	150kVA	N/A	N/A	936 (425)	23.6 x 39.5 x 78.7 (600 x 1000 x 2000)
	160kVA	1368 (620.5)	34.6 x 39.5 x 78.7 (880 x 1000 x 2000)	N/A	N/A
	175kVA	N/A	N/A	1030 (467)	33.0 x 39.5 x 78.7 (880 x 1000 x 2000)
	180kVA	1442 (654)	34.6 x 39.5 x 78.7 (880 x 1000 x 2000)	N/A	N/A
	200kVA	1516 (687.6)	34.6 x 39.5 x 78.7 (880 x 1000 x 2000)	1030 (467)	23.6 x 39.5 x 78.7 (600 x 1000 x 2000)
	225kVA	N/A	N/A	1030 (467)	33.0 x 39.5 x 78.7 (840 x 1000 x 2000)
	250kVA	N/A	N/A	1244 (564)	33.0 x 39.5 x 78.7 (840 x 1000 x 2000)
<b>Physical Data Ancillaries</b>		<b>Weight lb (kg)</b>	<b>Dimensions, W X D X H in (mm)</b>	<b>Weight lb (kg)</b>	<b>Dimensions, W X D X H in (mm)</b>
	600mm Bypass Distribution Cabinet	550 (250)	23.6 x 39.5 x 78.7 (600 x 1000 x 2000)	N/A	N/A
	300mm Maintenance Bypass Cabinet	288 (131)	7.9 x 39.5 x 78.7 (200 x 1000 x 2000)	288 (131)	11.8 x 39.5 x 78.7 (300 x 1000 x 2000)
	200mm Maintenance Bypass Cabinet	198 (90)	7.9 x 39.5 x 78.7 (200 x 1000 x 2000)	198 (90)	N/A
	1200mm Battery Cabinet	N/A	N/A	4907 (2226) with HX540 batteries	1200mm battery cabinet 47.3 x 39.5 x 78.7 (1200 x 1000 x 2000)
	880mm Battery Cabinet	3649 (1656) with HX540 batteries	34.7 x 39.5 x 78.7 (880 x 1000 x 2000)	2962 (1344) with HX300 batteries	34.7 x 39.5 x 78.7 (880 x 1000 x 2000)
	600mm Battery Cabinet	2454 (1114) with HX330 batteries	23.6 x 39.5 x 78.7 (600 x 1000 x 2000)	N/A	N/A
	320mm Battery Cabinet	1432 (650) with HX205 batteries	12.6 x 39.5 x 78.7 (320 x 1000 x 2000)	N/A	N/A
	Lithium-ion Battery Cabinet (Samsung)	N/A	N/A	1200 (545) with batteries	26 x 24 x 81 (650 x 600 x 2055)
<b>Environmental</b>		<b>Operating Temperature</b> , °F (°C): UPS: 32° to 104°F (0-40°C); Battery: 68° to 86°F (20-30°C). <b>Relative Humidity</b> : 0% to 95%, non-condensing. <b>Operating Altitude</b> : Up to 3,300 ft. (1,000m) without derating. <b>Acoustical Noise, db, at 39 in.</b> : Less than 59 dBA typical, 3.3 ft. (1m) from the unit			
<b>Agency/Certification/ Conformance</b>		Listed to UL 1778 , UL 924 and CSA certified. Meets current requirements for safe high performance UPS operation. ENERGY STAR® qualified. Seismic and OSHPD certified.			
<b>Warranty Standard</b>		1 year			



**Vertiv.com** | Vertiv Headquarters, 1050 Dearborn Drive, Columbus, OH, 43085, USA

© 2020 Vertiv Group Corp. All rights reserved. Vertiv™ and the Vertiv logo are trademarks or registered trademarks of Vertiv Group Corp. All other names and logos referred to are trade names, trademarks or registered trademarks of their respective owners. While every precaution has been taken to ensure accuracy and completeness here, Vertiv Group Corp. assumes no responsibility, and disclaims all liability, for damages resulting from use of this information or for any errors or omissions. Specifications, rebates and other promotional offers are subject to change at Vertiv's sole discretion upon notice.

SL-26003 (R12/20)