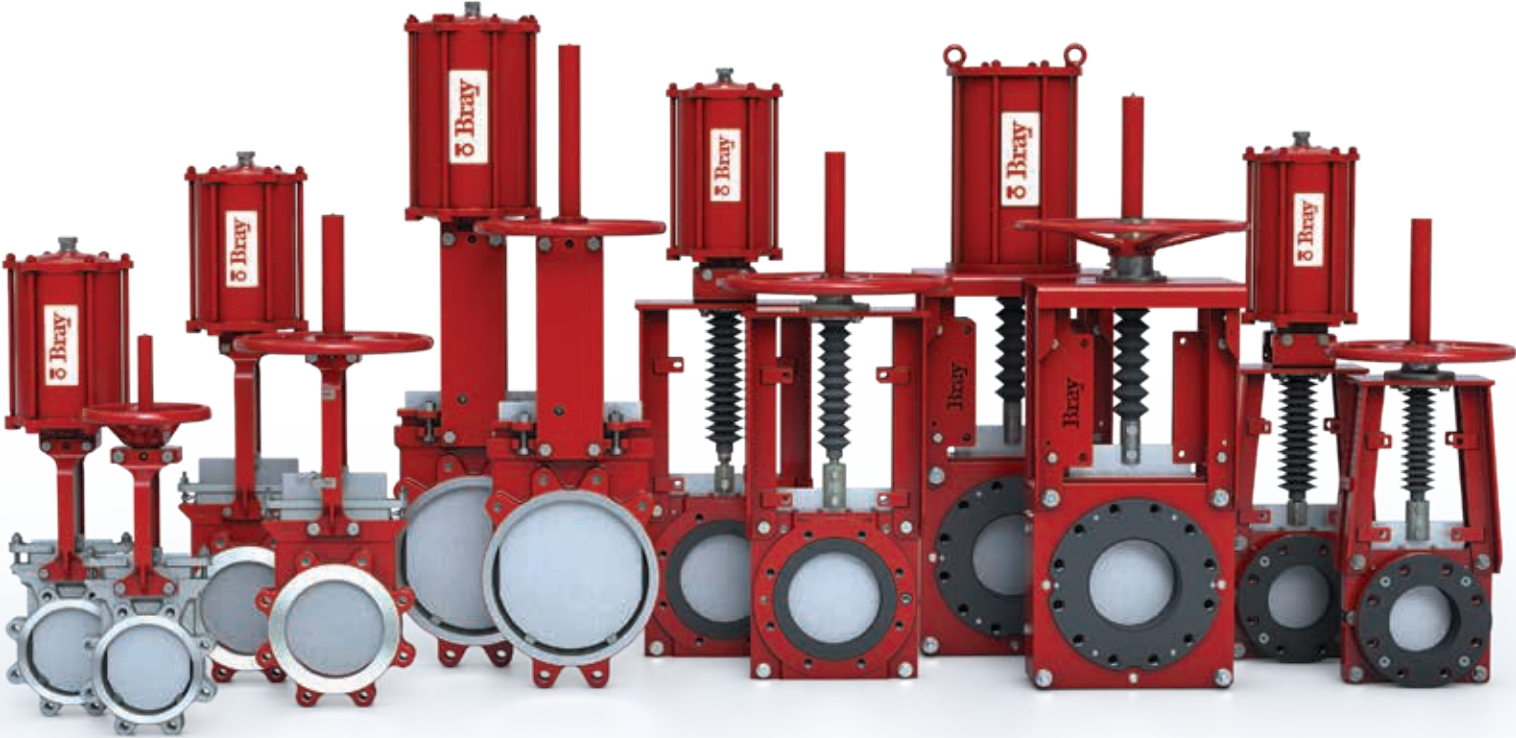


KNIFE GATE & SLURRY VALVE PRODUCT GUIDE



SERIES 740 BIDIRECTIONAL KNIFE GATE VALVES

One-piece cast body with flexible wire reinforced elastomer seat for bidirectional zero leakage shutoff in a wide range of industrial applications.

TECHNICAL SPECIFICATIONS

| | | |
|-------------------------|--------------------------------------|--|
| Size Range | NPS 2 to 36 DN 50 to 900 | |
| Body Style | Single Piece - Lug | |
| Pressure Rating | 2-24 150psi 30-36 100psi | |
| | 50-600mm 10 bar 750-900mm 7 bar | |
| Drilling | ASME B16.5 CL150 ASME B16.47 CL150 | |
| Face to Face | MSS SP-81 | |
| Certification | CE/PED Canadian CRN | |
| Design Standard | MSS SP-81 | |
| Testing Standard | MSS SP-151 | |

STANDARD CONSTRUCTION

| | | |
|-----------------|----------------------------------|----------------------------------|
| Body | CF8 (304) | CF8M (316) |
| Gate | 304 | 316 |
| Seat | Buna-N | Buna-N |
| Stem | 304 | 304 |
| Gland | 304 | 304 |
| Packing | PTFE Impregnated Synthetic Fiber | PTFE Impregnated Synthetic Fiber |
| Topworks | Steel | Steel |

APPLICATION GUIDE

Pulp & Paper | General Industrial | Power | Wastewater | Chemical | Ethanol



SERIES 940 UNIDIRECTIONAL KNIFE GATE VALVES

One-piece cast body designed for rugged performance in applications ranging from general purpose to severe media handling.

TECHNICAL SPECIFICATIONS

| | | |
|-------------------------|--------------------------------------|--|
| Size Range | NPS 2 to 36 DN 50 to 900 | |
| Body Style | Single piece Lug | |
| Pressure Rating | 2-24 150psi 30-36 100psi | |
| | 50-600mm 10 bar 750-900mm 7 bar | |
| Drilling | ASME B16.5 CL150 ASME B16.47 CL150 | |
| Face to Face | MSS SP-81 | |
| Certification | CE/PED Canadian CRN | |
| Design Standard | MSS SP-81 | |
| Testing Standard | MSS SP-151 | |

STANDARD CONSTRUCTION

| | | |
|-----------------|----------------------------------|----------------------------------|
| Body | CF8 (304) | CF8M (316) |
| Gate | 304 | 316 |
| Seat | Integral | Integral |
| Stem | 304 | 304 |
| Gland | 304 | 304 |
| Packing | PTFE Impregnated Synthetic Fiber | PTFE Impregnated Synthetic Fiber |
| Topworks | CS | CS |

APPLICATION GUIDE

Pulp & Paper | General Industrial | Power | Wastewater | Chemical
Food & Beverage



SERIES 941 UNIDIRECTIONAL KNIFE GATE VALVES

Engineered for general purpose on/off service and isolation of clean, dirty, corrosive, abrasive, viscous and high temperature media

TECHNICAL SPECIFICATIONS

| | |
|-------------------------|---|
| Size Range | NPS 2 to 36 DN 50 to 900 |
| Body Style | Single Piece - Lug |
| Pressure Rating | 2-24 150psi 30-36 100psi 50-600mm 10 bar 750-900mm 7 bar |
| Drilling | ASME B16.5 CL150 ASME B16.47 CL150 |
| Face to Face | MSS SP-81 |
| Certification | CE/PED Canadian CRN |
| Design Standard | MSS SP-81 |
| Testing Standard | MSS SP-151 |

STANDARD CONSTRUCTION

| | |
|-----------------|---|
| Body | CF8M (316) |
| Gate | 316 |
| Seat | Integral |
| Stem | 304 |
| Gland | 304 |
| Packing | Energized Quad Seal with PTFE Anti-Extrusion Ring |
| Topworks | CS |

APPLICATION GUIDE

Pulp & Paper | General Industrial | Power | Wastewater | Chemical | Mining
Food & Beverage



SERIES 950 UNIDIRECTIONAL KNIFE GATE VALVES

Engineered for general purpose on/off service and isolation of clean, dirty, corrosive, abrasive, viscous and high temperature media.

TECHNICAL SPECIFICATIONS

| | |
|-------------------------|---|
| Size Range | NPS 2 to 36 DN 50 to 900 |
| Body Style | Single Piece - Semi-Lug |
| Pressure Rating | 2-24 150psi 30-36 100psi 50-600mm 10 bar 750-900mm 7 bar |
| Drilling | ASME B16.5 CL150 ASME B16.47 CL150 |
| Face to Face | MSS SP-81 |
| Certification | Canadian CRN PED ATEX |
| Design Standard | MSS SP-81 |
| Testing Standard | MSS SP-151 |

STANDARD CONSTRUCTION

| | |
|-----------------|-------------------------------------|
| Body | CI |
| Gate | 304 |
| Seat | Integral |
| Stem | 304 |
| Gland | CS |
| Packing | PTFE Impregnated Synthetic Fiber |
| Topworks | CS |

APPLICATION GUIDE

Pulp & Paper | General Industrial | Power | Wastewater | Chemical
Food & Beverage



SERIES 762 BIDIRECTIONAL SLURRY VALVES

Two-piece bolted body with twin elastomer seats and a push-through gate designed for bidirectional heavy duty zero leakage shutoff with self cleaning in high pressure slurries.

TECHNICAL SPECIFICATIONS

| | |
|-------------------------|----------------------------|
| Size Range | NPS 3 to 36 DN 80 to 900 |
| Body Style | Two-piece Bolted - Flanged |
| Pressure Rating | 100psi 7 bar |
| Drilling | ASME B16.5 CL150 |
| Face-to-face | Per Industry Standard |
| Design Standard | Manufacturer Standard |
| Testing Standard | Manufacturer Standard |

STANDARD CONSTRUCTION

| | |
|-----------------------|----------------|
| Body | DI |
| Gate | 316 |
| Seat | Natural Rubber |
| Secondary Seal | EPDM |

APPLICATION GUIDE

Chemical | Mining | Power



SERIES 767 BIDIRECTIONAL SLURRY VALVES

Two-piece bolted body with twin elastomer seats and a push-through gate designed for bidirectional zero leakage shutoff with self cleaning in high pressure slurries.

TECHNICAL SPECIFICATIONS

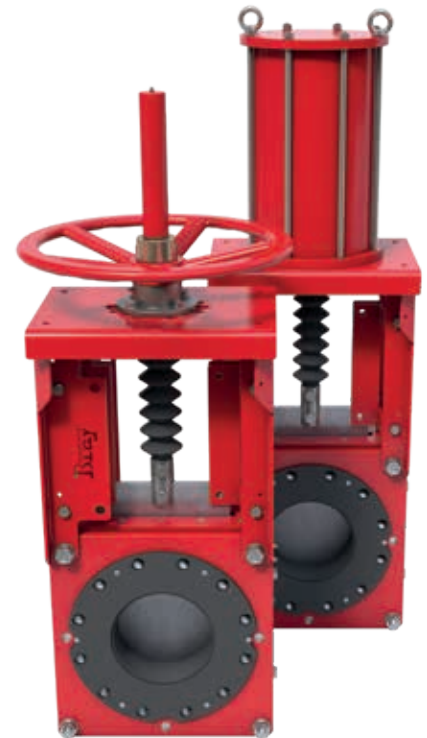
| | |
|-------------------------|-------------------------------------|
| Size Range | NPS 3 to 24 DN 80 to 600 |
| Body Style | Two-piece Bolted - Wafer |
| Pressure Rating | 300psi 740psi 20 bar 51 bar |
| Drilling | ASME B16.5 CL150 ASME B16.5 CL300 |
| Face-to-face | Per Industry Standard |
| Design Standard | Manufacturer Standard |
| Testing Standard | Manufacturer Standard |

STANDARD CONSTRUCTION

| | |
|-----------------------|--|
| Body | DI |
| Gate | 316 2205 17-4 (depending on pressure rating) |
| Seat | Natural Rubber |
| Secondary Seal | EPDM |

APPLICATION GUIDE

Chemical | Mining | Power



SERIES 768 BIDIRECTIONAL SLURRY VALVES

Two-piece bolted body with twin elastomer seats and a push-through gate designed for bidirectional zero leakage shutoff with self cleaning in demanding slurries.

TECHNICAL SPECIFICATIONS

| | |
|-------------------------|----------------------------|
| Size Range | NPS 2 to 24 DN 50 to 600 |
| Body Style | Two-piece Bolted - Wafer |
| Pressure Rating | 150psi 10 bar |
| Drilling | ASME B16.5 CL150 |
| Face-to-face | MSS SP-81 |
| Design Standard | Manufacturer Standard |
| Testing Standard | Manufacturer Standard |

STANDARD CONSTRUCTION

| | |
|-----------------------|----------------|
| Body | DI |
| Gate | 316 |
| Seat | Natural Rubber |
| Secondary Seal | EPDM |

APPLICATION GUIDE

Chemical | Mining | Power



SERIES 746 BIDIRECTIONAL SLURRY VALVES

One-piece cast body with extended, molded and bonded polyurethane liner for bidirectional zero leakage shutoff and increased protection from abrasive/corrosive high pressure slurries.

TECHNICAL SPECIFICATIONS

| | |
|-------------------------|----------------------------|
| Size Range | NPS 2 to 24 DN 50 to 600 |
| Body Style | One-piece - Wafer |
| Pressure Rating | 240psi 16 bar |
| Drilling | ASME B16.5 CL150 |
| Face-to-face | Per Industry Standard |
| Design Standard | Manufacturer Standard |
| Testing Standard | MSS SP-151 |

STANDARD CONSTRUCTION

| | |
|----------------|----------------------------------|
| Body | DI |
| Gate | 316 |
| Liner | Polyurethane |
| Packing | PTFE impregnated synthetic fiber |

APPLICATION GUIDE

Chemical | Mining | Power



SERIES 752 BIDIRECTIONAL SLURRY VALVES

Two-piece bolted body with steel reinforced perimeter seat for bidirectional zero leakage shutoff in demanding slurries.

TECHNICAL SPECIFICATIONS

| | |
|-------------------------|---|
| Size Range | NPS 2 to 24 DN 50 to 600 |
| Body Style | Two-piece bolted - Wafer |
| Pressure Rating | 150psi 240psi 300psi 10bar 16bar 20bar |
| Drilling | ASME B16.5 CL150 |
| Face-to-face | MSS SP-81 (150psi & 240psi models) |
| Design Standard | MSS SP-81 |
| Testing Standard | MSS SP-151 |

STANDARD CONSTRUCTION

| | |
|----------------|----------------------------------|
| Body | CF8 CF8M WCB DI |
| Gate | 304 316 |
| Seat | Buna-N |
| Packing | PTFE impregnated synthetic fiber |

APPLICATION GUIDE

Chemical | Mining | Power



SERIES 755 BIDIRECTIONAL SLURRY VALVES

Two-piece bolted body with a replaceable polyurethane bore liner and steel reinforced perimeter seat for bidirectional zero leakage shutoff in abrasive/corrosive slurries.

TECHNICAL SPECIFICATIONS

| | |
|-------------------------|---|
| Size Range | NPS 2 to 24 DN 50 to 600 |
| Body Style | Two-piece bolted - Wafer |
| Pressure Rating | 150psi 240psi 300psi 10bar 16bar 20bar |
| Drilling | ASME B16.5 CL150 |
| Face-to-face | MSS SP-81 (150psi & 240psi models) |
| Design Standard | Manufacturer Standard |
| Testing Standard | MSS SP-151 |

STANDARD CONSTRUCTION

| | |
|----------------|----------------------------------|
| Body | CF8 CF8M WCB DI |
| Gate | 304 316 |
| Seat | Buna-N |
| Packing | PTFE impregnated synthetic fiber |

APPLICATION GUIDE

Chemical | Mining | Power



SERIES 765 BIDIRECTIONAL SLURRY VALVES

Compact, two-piece bolted body with twin elastomer seats and a push-through gate designed for bidirectional zero leakage shutoff with self cleaning in demanding slurries.

TECHNICAL SPECIFICATIONS

| | |
|-------------------------|----------------------------|
| Size Range | NPS 2 to 12 DN 50 to 300 |
| Body Style | Two-piece bolted - Wafer |
| Pressure Rating | 90psi |
| | 6.2bar |
| Drilling | ASME B16.5 CL150 |
| Face-to-face | MSS SP-81 |
| Design Standard | Manufacturer Standard |
| Testing Standard | Manufacturer Standard |
| Certification | Canadian CRN |

STANDARD CONSTRUCTION

| | |
|-----------------------|----------------|
| Body | DI |
| Gate | 304 |
| Seat | Natural Rubber |
| Secondary Seal | EPDM |

APPLICATION GUIDE

Chemical | Mining | Power



SERIES 770 BIDIRECTIONAL O-PORT GATE VALVES

Two-piece bolted body with o-ported slide gate designed for minimal stress with maximum sealing in severe media applications.

TECHNICAL SPECIFICATIONS

| | |
|-------------------------|----------------------------|
| Size Range | NPS 2 to 24 DN 50 to 600 |
| Body Style | Two-piece bolted - Wafer |
| Pressure Rating | 150psi CWP |
| | 10bar |
| Drilling | ASME B16.5 CL150 |
| Face-to-face | MSS SP-81 |
| Design Standard | Manufacturer Standard |
| Testing Standard | Manufacturer Standard |
| Certification | Canadian CRN |

STANDARD CONSTRUCTION

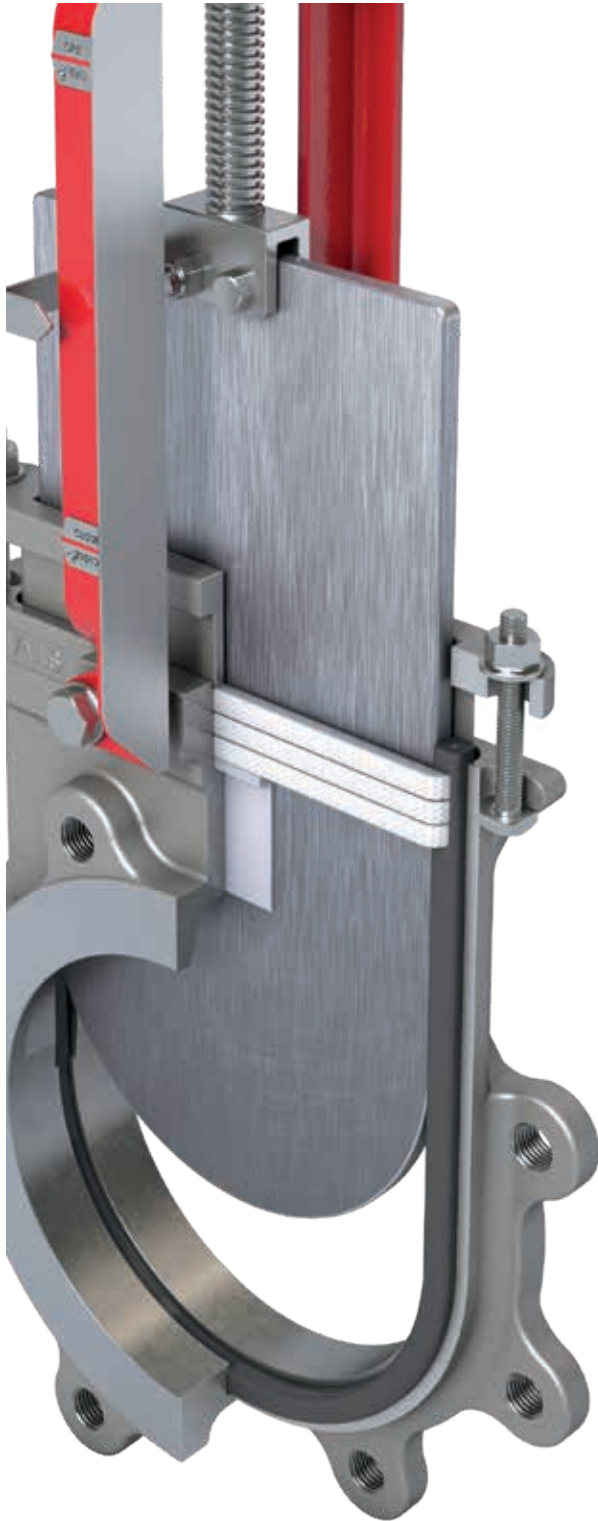
| | |
|----------------|----------------------------------|
| Body | DI |
| Gate | 304 |
| Seat | EPDM |
| Packing | PTFE impregnated synthetic fiber |

APPLICATION GUIDE

Chemical | Mining | Power



PACKING OPTIONS



MAXIMUM TEMPERATURE RANGE

| | | |
|--|--------|--|
| Pure PTFE | 500°F | |
| | 260°C | |
| PTFE impregnated Synthetic Fiber | 450°F | |
| | 232°C | |
| PTFE w/Buna-N Quad Seal¹ | 194°F | |
| | 90°C | |
| PTFE w/Viton® Quad Seal¹ | 392°F | |
| | 200°C | |
| PTFE w/EPDM Quad Seal | 248°F | |
| | 120°C | |
| PTFE w/Copper Wiper² | 500°F | |
| | 260°C | |
| Graphite | 1202°F | |
| | 650°C | |

¹ PTFE packing with energized elastomer.

² PTFE packing with copper wiper. Copper wiper not applicable for F752 / 755

SEAT OPTIONS

Series 740 Replaceable flexible wire reinforced elastomer seat

| | | |
|--------|---------------|---------------|
| Buna-N | -35° to 194°F | -37° to 90°C |
| EPDM | -65° to 248°F | -54° to 120°C |
| FKM | -15° to 392°F | -26° to 200°C |



Series 767 Twin elastomer seats

| | | |
|----------------|---------------|---------------|
| Natural Rubber | -60° to 165°F | -51° to 74°C |
| EPDM | -65° to 248°F | -54° to 120°C |



Series 752 Replaceable steel reinforced elastomer seat

| | | |
|--------|---------------|---------------|
| Buna-N | -35° to 194°F | -37° to 90°C |
| EPDM | -65° to 248°F | -54° to 120°C |
| FKM | -15° to 392°F | -26° to 200°C |



Series 768 Twin elastomer seats

| | | |
|----------------|---------------|---------------|
| Natural Rubber | -60° to 165°F | -51° to 74°C |
| Buna-N | -35° to 194°F | -37° to 90°C |
| EPDM | -65° to 248°F | -54° to 120°C |



Series 755 Replaceable steel reinforced elastomer seat

| | | |
|--------|---------------|---------------|
| Buna-N | -35° to 194°F | -37° to 90°C |
| EPDM | -65° to 248°F | -54° to 120°C |
| FKM | -15° to 392°F | -26° to 200°C |



Series 770 Twin elastomer seat

| | | |
|------|---------------|---------------|
| EPDM | -65° to 248°F | -54° to 120°C |
|------|---------------|---------------|



Series 762 Twin elastomer seats

| | | |
|----------------|---------------|---------------|
| Natural Rubber | -60° to 165°F | -51° to 74°C |
| Buna-N | -35° to 194°F | -37° to 90°C |
| EPDM | -65° to 248°F | -54° to 120°C |



Series 940 Standard integral metal seat and optional replaceable zero leakage resilient seat

| | | |
|--------|----------------|----------------|
| Buna-N | -35° to 194°F | -37° to 90°C |
| EPDM | -65° to 248°F | -54° to 120°C |
| FKM | -15° to 392°F | -26° to 200°C |
| PTFE | -235° to 500°F | -148° to 260°C |



Series 765 Twin elastomer seats

| | | |
|----------------|---------------|---------------|
| Natural Rubber | -60° to 165°F | -51° to 74°C |
| EPDM | -65° to 248°F | -54° to 120°C |



Series 950 Standard integral metal seat and optional replaceable zero leakage resilient seat

| | | |
|--------|----------------|----------------|
| Buna-N | -35° to 194°F | -37° to 90°C |
| EPDM | -65° to 248°F | -54° to 120°C |
| FKM | -15° to 392°F | -26° to 200°C |
| PTFE | -235° to 500°F | -148° to 260°C |



ACTUATOR OPTIONS



Direct Mounted Handwheel



Hydraulic Actuator



Double Acting
Pneumatic Actuator



Electric Actuator



Bevel Gear Actuator



Chain Wheel



Lever

ADDITIONAL ACCESSORIES (ILLUSTRATED IN RED)



Deflection Cone



Handwheel Lock Out



Pinned Lockout Open & Closed



Pneumatic Failsafe



Proximity Sensor



Mechanical Limit Switch



Bonnet



Manual Override



Non Rising Stem



Gate Guard



BRAY FLOW CONTROL SOLUTIONS ARE AVAILABLE FOR A VARIETY OF INDUSTRIES.

ENERGY

Mining
Oil & Gas
Power / FGD
Nuclear Power

WATER

Water / Wastewater
Ultra Pure Water
Desalination
Irrigation

INDUSTRIAL

Chemical
Pulp & Paper
Textile
Marine

INFRASTRUCTURE

Beverage & Food
Transportation
Heating, Ventilation & Air Conditioning (HVAC)



US HEADQUARTERS

Bray International, Inc.
13333 Westland East Blvd.
Houston, Texas 77041
Tel: 281.894.5454

CHINA HEADQUARTERS

Bray Controls (ZheJiang) Co. Limited
98 GaoXin # 6 Road
XiaoShan Economic & Development Zone
HangZhou, ZheJiang 311231, P.R. China
Tel: 86 571 8285 2200

EUROPE HEADQUARTERS

Bray Armaturen & Antriebe Europa
Halskestraße 25
47877 Willich
Germany
Tel: +49 2154 8875-0

INDIA HEADQUARTERS

Bray Controls India Pvt. Ltd.
Plot No. H-18 & H-19
SIPCOT Industrial Park
Vallam Vadagal, Echoor Post
Sriperumbudur Taluk
Kancheepuram District
Tami Nadu - 631 604
Tel: +91-44-67170100



THE SMART CHOICE FOR FLOW CONTROL SINCE 1986.
WITH MORE THAN 300 LOCATIONS WORLDWIDE,
FIND A REPRESENTATIVE NEAR YOU AT **BRAY.COM**

All statements, technical information, and recommendations in this bulletin are for general use only. Consult Bray representatives or factory for the specific requirements and material selection for your intended application. The right to change or modify product design or product without prior notice is reserved. Patents issued and applied for worldwide.